

# JORDAN

PRODUCT CATALOGUE



# WELCOME...

To the Home of Premium Performance.

It's been an unprecedented few years, but our industry has come out stronger than ever and we're excited about the opportunities ahead. We've seen some incredible investments from new gyms/brands and a change up in gym design to accommodate the post-covid fitness market. We hope you have fun exploring just what's possible when designing your gym space, and are inspired by our vibrant range of premium fitness equipment.

## PRODUCT KEY



Our No.1  
Best Sellers



Customise  
Add Your  
Logo



Customise  
Choose Your  
Colour



New  
Product



New  
Design



Eco  
Friendly



BSI  
Approved



Made in  
The UK



The evolution of the Jordan brand has boomed over the last decade. Our continual domination both nationally and internationally has enabled us to concentrate on innovating and developing exciting new products that you can see throughout this catalogue. We can't wait to share with you the endless possibilities that will define your brand like never before.

Looking back to the beginning of it all, where I created my first functional training facility over 30 years ago, I am incredibly proud that we are now one of the worlds most recognised free weight, flooring, and functional suppliers. The future of Jordan Fitness is brighter than ever, with an expanding workforce, stronger client relationships around the world, and unbeatable product quality. We welcome you to our family...

**Neil Jordan**  
Founder & Chairman

**DELIVERING  
QUALITY  
SINCE 1989**





# SUPPLYING OUR FITNESS COMMUNITY WORLDWIDE

AF



PUREGYM



B-HIT

truGym

THE  
PARKWOOD  
GROUP

STORM

nön  
stop  
GYM

RISE FITNESS CLUBS

BOXING  
SCIENCE



SNAP  
FITNESS 24-7

STACKZ

vision  fitness

life.

## PREMIUM INNOVATION - ANYTHING IS POSSIBLE

For the last 30 years our main focus has been to develop industry-leading gym equipment that lasts.

With durability, sustainability and style at the forefront of our design, we offer premium quality that packs a punch.

Specialising in customisation, we are proud to be a world class provider of custom branded equipment, from free weights to benches and flooring.

Whatever your vision - anything is possible!





## CONTENTS

FREE  
WEIGHTS

18

## WHAT YOU'LL FIND INSIDE...

GYM RIGS  
& RACKS

66

JORDAN  
BENCHES &  
MACHINES

74

92  
FUNCTIONAL



STUDIO

126



COMBAT

152



168

FLOORING



SPEED &  
AGILITY

178



JORDAN®  
Training Academy

184

## CASE STUDIES



## INSPIRING GYM SET UPS....





**198**

**MIDLANDS  
FITNESS GAMES**



**200**

**WAREHOUSE  
GYM & KITCHEN**



**202**

**SORORITY  
STRENGTH**



**204**

**HOME GARDEN  
PODS**

<b>INSTALLS &amp; SERVICING.....</b>	<b>206</b>
<b>BUSINESS FINANCE.....</b>	<b>207</b>
<b>GYM DESIGN .....</b>	<b>208</b>
<b>GLOSSARY .....</b>	<b>210</b>

# FRESH OFF THE PRESS





## TOP NEW PRODUCTS

We've invested in a range of new, and re-engineered fitness products, many now Made In Britain at our Norfolk HQ. With our focus on premium quality, we ensure our equipment supports you with your goals to offer the best experience for your clients.

From our new Ignite Pump X Studio Barbells, featuring a sleek remodelled design, to our Urethane Premium Dumbbells, and re-engineered racks, space-saving is our ultimate goal.

### Here is a quick guide to what's new...

Grey Urethane Dumbbells - pg 23

S-Series Dumbbell Racks – pg 29/30

Half Hex Trap Bar - pg 55

Olympic Dumbbell Bars - pg 55

BOX12 Pod - pg 71

Kettlebell Storage Rack - pg 97

Torque Tank M4 - pg 112

Theragun - pg 117



## CUSTOM BRANDING

Discover how you can add your brand/logo to give your brand the ultimate platform:

Dumbbells – See page 24

Barbells – See page 34

Olympic Discs – See page 48

Fusion HIIT Bench - See page 77

Ignite Rig – See page 70

Studio Barbells – See page 129

Flooring & Turf - See page 176



BENCHES, RACKS & RIGS



FREE WEIGHTS

FLOORING



OAK CENTRE



FABRIC SLEEVES





## POWDER COATING SERVICE

Take your brand identity to the next level and make your gym or health club truly memorable.

We offer a premium aluminium, stainless steel, mild steel and cast iron colouring service to give your gym storage racks and rigs a quality, durable finish.

Powder coating is chip & scratch resistant as well as being environmentally friendly (as it contains no solvents). Due to its high resistance to sunlight (UV light) it is particularly beneficial for outdoor rigs.

Available in 20 standard RAL colours with hundreds more to choose from to match your brand, you can also choose from texture, matt, gloss and satin finishes.

Prices start from as little as **£35**. Please call or email us on **sales@jordanfitness.com** for a bespoke quote.







**CHOOSE FROM HUNDREDS  
OF RAL COLOURS**





**PG 18**   **FREE WEIGHTS**

- PG 20   Dumbbells & Racks
- PG 32   Barbells & Racks
- PG 38   Olympic Discs & Plates
- PG 50   Weight Tree
- PG 51   Plate Rack
- PG 52   Olympic Bars

# FREE WEIGHTS

A collection of free weights and bars, including a barbell with a 5kg plate, a stack of plates, and several steel bars on a rack.

- PG 54 Half Hex Trap Bar
- PG 58 Steel Series Bars
- PG 60 Bar Holder & Wall Bar Holder
- PG 61 Olympic Collars
- PG 62 Olympic Lifting Platforms
- PG 64 Free Weight Accessories
- PG 65 Core Plate & Accessories

# DUMBBELLS





A fitness staple for 30 years, Jordan dumbbells and racks have always been known for their quality and durability, as we source the highest quality materials to ensure longevity. We've invested in designs that last, all developed in the UK, building on our strength, so you can build up yours.

Our unique customisation service offers the opportunity to personalise your dumbbells, providing your brand with an opportunity to truly stand out.

Take a look at what we have to offer...



## IGNITE V2 URETHANE DUMBBELLS



Unique to Jordan, this anti-roll design makes these dumbbells ideal for free weight areas. Fully customisable, you can add your brand and logo to stand out against the competition.

- Unique design prevents rolling, and so ticks both safety and tidy boxes
- Heat-treated, brushed steel handles extend durability over chrome versions and add strength. Also features premium, encapsulated urethane so not an end cap in sight
- Great for a huge number of upper-body strength exercises, from shoulder press through to chest press and bicep curls
- Available in a variety of sets between 2.5kg and 50kg
- Superior five-year warranty

### DUMBBELL SETS

<b>JT-IUD2-P1</b>	2.5-25kg	2.5kg increments/10 pairs
<b>JT-IUD2-P2</b>	27.5-37.5kg	2.5kg increments/5 pairs
<b>JT-IUD2-P3</b>	40-50kg	2.5kg increments/5 pairs
<b>JT-IUD2-P4</b>	2.5-50kg	2.5kg increments/20 pairs
<b>JT-IUD2-P5</b>	2.5-30kg	2.5kg increments/12 pairs
<b>JT-IUD2-P6</b>	1-10kg	1kg increments/10 pairs

INDIVIDUAL PAIRS ARE ALSO AVAILABLE

## PREMIUM URETHANE DUMBBELLS



Designed in the UK utilising a shock absorbent premium urethane, these classic red dumbbells are a popular choice for gyms and health clubs looking to make a statement.

- Heat-treated steel dumbbells coated in heavy duty and odourless urethane, for superior endurance
- Great for a comprehensive number of upper-body strength exercises, from shoulder press through to chest press and bicep curls
- Heavy weights available, so ideal for CrossFit, bodybuilding and heavy strength training
- Available in a variety of sets between 2.5kg and 75kg
- Superior five-year warranty

### DUMBBELL SETS

<b>JLUD3-P1</b>	2.5-25kg	2.5kg increments/10 pairs
<b>JLUD3-P2</b>	27.5-37.5kg	2.5kg increments/5 pairs
<b>JLUD3-P3</b>	40-50kg	2.5kg increments/5 pairs
<b>JLUD3-P4</b>	2.5-50kg	2.5kg increments/20 pairs
<b>JLUD3-P5</b>	2.5-30kg	2.5kg increments/12 pairs
<b>JLUD3-P6</b>	52.5-62.5kg	2.5kg increments/5 pairs
<b>JLUD3-P7</b>	65-75kg	2.5kg increments/5 pairs

INDIVIDUAL PAIRS ARE ALSO AVAILABLE

## PREMIUM URETHANE DUMBBELLS



Designed in the UK utilising a shock absorbent premium urethane, these new styled grey dumbbells are a popular choice for gyms and health clubs looking for a neutral colour tone.

- Heat-treated steel dumbbells coated in heavy duty and odourless urethane, for superior endurance
- Great for a comprehensive number of upper-body strength exercises, from shoulder press through to chest press and bicep curls
- Heavy weights available, so ideal for CrossFit, bodybuilding and heavy strength training
- Available in a variety of sets between 2.5kg and 75kg
- Superior five-year warranty

### DUMBBELL SETS

<b>JLUD4-P1</b>	2.5-25kg	2.5kg increments/10 pairs
<b>JLUD4-P2</b>	27.5-37.5kg	2.5kg increments/5 pairs
<b>JLUD4-P3</b>	40-50kg	2.5kg increments/5 pairs
<b>JLUD4-P4</b>	2.5-50kg	2.5kg increments/20 pairs
<b>JLUD4-P5</b>	2.5-30kg	2.5kg increments/12 pairs
<b>JLUD4-P6</b>	52.5-62.5kg	2.5kg increments/5 pairs
<b>JLUD4-P7</b>	65-75kg	2.5kg increments/5 pairs

INDIVIDUAL PAIRS ARE ALSO AVAILABLE

## HEX URETHANE DUMBBELLS



Built for commercial gyms and CrossFit Boxes, our sleek, stylish and ergonomically designed hex dumbbells provide users with the ultimate workout experience.

- Urethane coating creates a protective barrier between floors and other equipment minimizing impact and scuff marks - No other coating provides such longevity and impact protection
- Great for a huge number of upper-body strength exercises including planks, rows, and push-ups (ideal for this anti-roll design)
- Comfortable contoured handles are hard chromed for durability so they won't flake or peel
- Choose individual pairs or full sets from 1-10kg, 2.5-25kg and 2.5kg-30kg
- Three-year warranty

### DUMBBELL SETS

<b>JLHEXU-P1</b>	1-10kg	1kg increments/10 pairs
<b>JLHEXU-P2</b>	2.5-25kg	2.5kg increments/10 pairs
<b>JLHEXU-P3</b>	2.5-30kg	2.5kg increments/12 pairs

INDIVIDUAL PAIRS ARE ALSO AVAILABLE

## CUSTOM BRANDED URETHANE DUMBBELLS

---

Whether you're a gym, hotel or university... strengthen your customer bond and sense of community by adding your logo, slogan or brand colour to our quality urethane dumbbells.

- Choose to customise from our classic round dumbbells and Ignite V2 design
- Great for a huge number of upper-body strength exercises, from shoulder press through to chest press and bicep curls
- Encapsulated ends encased in durable, odourless urethane
- Urethane material minimises markings caused to benches and floors
- Available in sets between 1-10kg, 2-20kg and 2.5-75kg
- Extended five-year warranty\*

**Contact our dedicated customer sales team for a quote and design mock ups:**

**Call: +44 (0) 1553 763285**

**Email: [sales@jordanfitness.co.uk](mailto:sales@jordanfitness.co.uk)**







The Cooperation with Jordan Fitness in the past season/year was not only characterized by a very productive and professional exchange, their expertise in redesigning our training facility helped us to have a big impact on finding and creating a solution for better player development within the academy and first team environment."

**Chris Domogalla**  
**Head Of Performance**  
**Norwich City Football Club**



## CLASSIC RUBBER DUMBBELLS



A great-value rubber dumbbell featuring our classic design. This versatile dumbbell suits home users as well as commercial & boutique gyms.

- Used for bodybuilding, CrossFit, functional training as well as standard strength dumbbell exercises
- An EU and UK Registered Design, these dumbbells feature stylish rubber solid ends with a chrome contoured handle
- Known, industry wide for leaving zero damage to gym benches and flooring
- Available in a variety of sets between 1-10kg, 2-20kg and individual pairs from 2.5kg and 50kg (2.5kg increments)
- Three-year warranty

### DUMBBELL SETS

<b>JTFDSRN2-P1-RC</b>	1-10kg	1kg increments/10 pairs
<b>JTFDSRN2-P2-RC</b>	2.5-25kg	2.5kg increments/10 pairs
<b>JTFDSRN2-P3-RC</b>	2-20kg	2kg increments/10 pairs
<b>JTFDSRN2-P4-RC</b>	2.5kg-30kg	2.5kg increments/12 pairs
<b>JTFDSRN2-P5-RC</b>	12.5kg-35kg	2.5kg increments/10 pairs
<b>JTFDSRN2-P6-RC</b>	27.5kg-37.5kg	2.5kg increments/5 pairs
<b>JTFDSRN2-P7-RC</b>	40kg-50kg	2.5kg increments/5 pairs
<b>JTFDSRN2-P8-RC</b>	2.5kg-50kg	2.5kg increments/20 pairs

INDIVIDUAL PAIRS ARE ALSO AVAILABLE

## CHROME DUMBBELLS



Our stylish chrome dumbbells offer a sleek and sophisticated look whilst being great value for money.

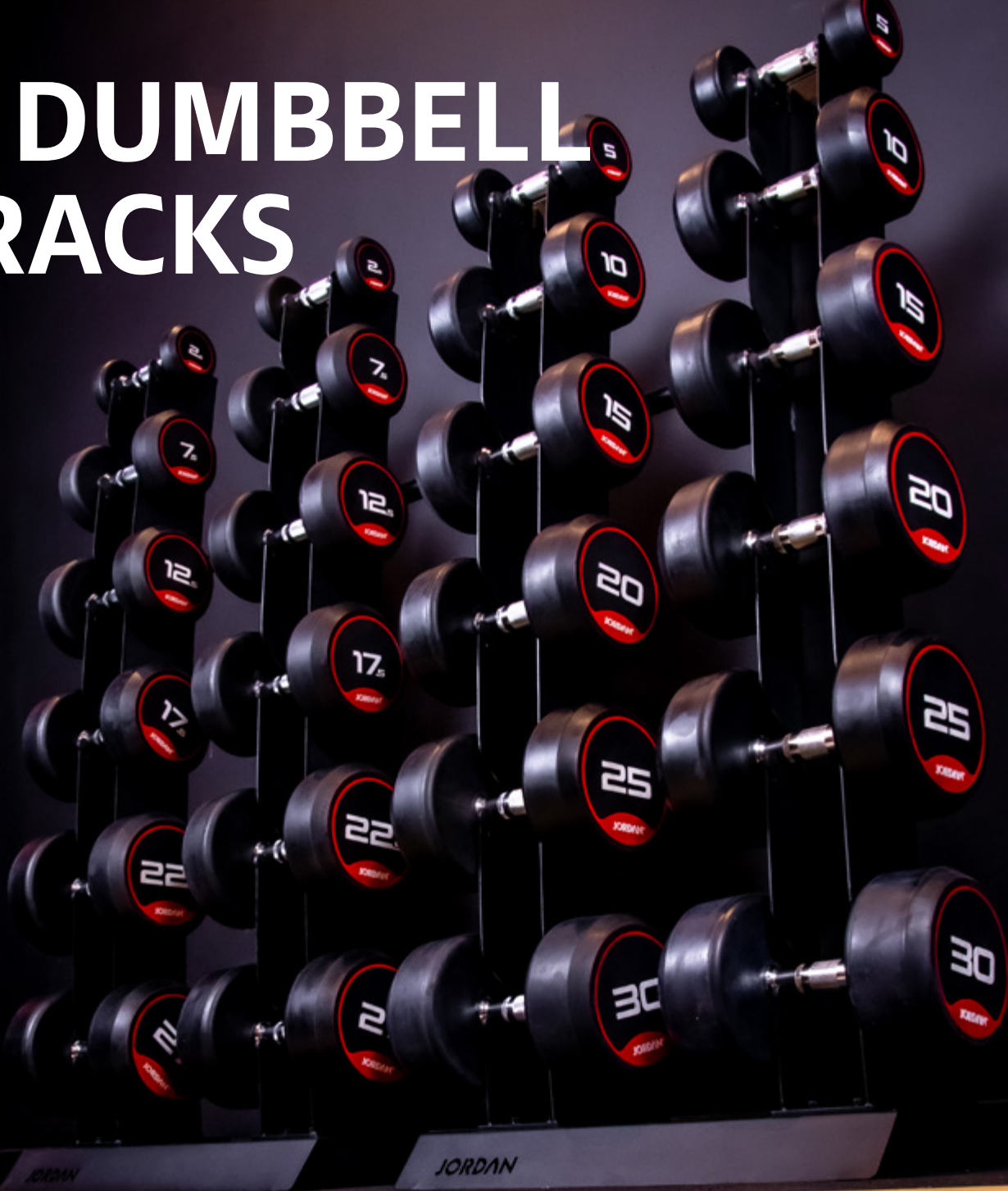
- Chip-proof with pressed fitted ends makes these dumbbells a perfect weight training aid
- Chrome comfort grip handles to reduce slippage from sweat
- Engraved weight identification and matte chrome gives the dumbbells a sleek finish
- Available in various weights from 1kg-20kg as well as sets of 1-10kg (10 pairs) and 2-20kg (10 pairs in 2kg increments)
- One-year warranty

### DUMBBELL SETS

<b>JTD-04-10</b>	1kg-10kg	1kg increments/10 pairs
<b>JTD-04/P3</b>	2kg-20kg	2kg increments/10 pairs

INDIVIDUAL PAIRS ARE ALSO AVAILABLE

# DUMBBELL RACKS



1



2



3



## VERTICAL DUMBBELL RACKS (S-SERIES)



A world first, our new vertical dumbbell racks are the ultimate space-saving storage solution, with room for up to 12 pairs of dumbbells (up to 30kg).

- These new free-standing racks now save up to 75% space (in length) compared to horizontal equivalents, so perfect for small spaces and gyms who want to maximise their offering.
- An EU and UK Registered Design, made from strong durable steel with plastic saddles to avoid scratches to dumbbells
- All racks can be linked/daisy chained together to provide a continuous rack for larger commercial gyms
- Holds our new HEX Urethane Dumbbells alongside Jordan Premium Urethane, Classic Rubber, Ignite and Chrome Dumbbells
- Available in two standard colours, Graphite Grey or Matte Black with the choice to powder coat in any colour to match your brand

<b>JTVDR2-BLK</b>	1	1-10 or 2-20kg	H:1710mm L:558mm D:482mm (10 pair)
-------------------	---	----------------	------------------------------------

<b>JTVDR2-GRY</b>		1-10 or 2-20kg	H:1710mm L:558mm D:482mm (10 pair)
-------------------	--	----------------	------------------------------------

<b>JTVDR3-BLK</b>	2	2.5-25kg	H:1832mm L:558mm D:482mm (10 pair)
-------------------	---	----------	------------------------------------

<b>JTVDR3-GRY</b>		2.5-25kg	H:1832mm L:558mm D:482mm (10 pair)
-------------------	--	----------	------------------------------------

<b>JTVDR4-BLK</b>	3	2.5-30kg	H:1307mm L:1418mm D:482mm (12 pair)
-------------------	---	----------	-------------------------------------

<b>JTVDR4-GRY</b>		2.5-30kg	H:1307mm L:1418mm D:482mm (12 pair)
-------------------	--	----------	-------------------------------------



ORIGINAL DESIGN VERTICAL RACKS AVAILABLE

<b>JTDR-05-10 GRY</b>	1-10kg	Chrome & Premium Rubber Dumbbells
-----------------------	--------	-----------------------------------

<b>JTDR-05-10 BLK</b>	1-10kg	Chrome & Premium Rubber Dumbbells
-----------------------	--------	-----------------------------------

<b>JTDR-05-20 GRY</b>	2-20kg	Chrome & Premium Rubber Dumbbells
-----------------------	--------	-----------------------------------

<b>JTDR-05-20 BLK</b>	2-20kg	Chrome & Premium Rubber Dumbbells
-----------------------	--------	-----------------------------------

<b>JTUDR-05-11 GRY</b>	1-10kg	Urethane Dumbbells
------------------------	--------	--------------------

<b>JTUDR-05-11 BLK</b>	1-10kg	Urethane Dumbbells
------------------------	--------	--------------------

# HORIZONTAL DUMBBELL RACKS (S-SERIES)



Our new horizontal dumbbell racks are stronger and more stylish than ever before, featuring a one piece curved leg design and storage for up to 12 pairs of dumbbells.

- An EU and UK Registered Design, this rack features a curved steel frame with plastic saddles to prevent damage to your dumbbells
- Two tier racks can house any range of 5, 10 or 12 pairs of dumbbells (excluding hex dumbbells)
- All racks can be linked/ daisy chained together to provide a continuous rack for larger commercial gyms with heavier dumbbell sets
- Available in two standard colours, Graphite Grey or Matte Black, or choose to powder coat in any colour to match your own brand
- One-year warranty



## 2 TIER RACKS

<b>JTDR-05-BLK</b>	5 pairs	H:760mm L:1240mm D:608mm
<b>JTDR-05-GRY</b>	5 pairs	H:760mm L:1240mm D:608mm
<b>JTDR-10-BLK</b>	10 pairs	H:760mm L:2450mm D:530mm
<b>JTDR-10-GRY</b>	10 pairs	H:760mm L:2450mm D:530mm
<b>JTDR-12-BLK</b>	12 pairs	H:760mm L:2976mm D:530mm
<b>JTDR-12-GRY</b>	12 pairs	H:760mm L:2976mm D:530mm



## HORIZONTAL DUMBBELL RACKS



Heavy duty, steel dumbbell rack with traditional design that stores up to 12 pairs of dumbbells.

- Bent flat oval steel frame with plastic saddles and correct weight location to prevent damage to your dumbbells
- Two tier rack can contain 5, 10 or 12 pairs of dumbbells whilst three tier rack houses 10 pairs of dumbbells
- All racks can be 'daisy chained' to provide a continuous rack for larger commercial gyms
- Available in two standard colours, Graphite Grey or Matte Black, with powder coating available to match your own brand colour
- One-year warranty

### 2 TIER RACKS

<b>JTDR-09N GRY</b>	5 pairs	H:804mm L:1240mm D:608mm
<b>JTDR-09N BLK</b>	5 pairs	H:804mm L:1240mm D:608mm
<b>JTDR-08-10N GRY</b>	10 pairs	H:840mm L:2600mm D:530mm
<b>JTDR-08-10N BLK</b>	10 pairs	H:840mm L:2600mm D:530mm
<b>JTDR-08-12N GRY</b>	12 pairs	H:840mm L:2976mm D:530mm
<b>JTDR-08-12N BLK</b>	12 pairs	H:840mm L:2976mm D:530mm

### 3 TIER RACKS

<b>JTDR-08-10N3 GRY</b>	10 pairs	H:890mm, L:1800mm D:760mm
<b>JTDR-08-10N3 BLK</b>	10 pairs	H:890mm L:1800mm D:760mm

## HORIZONTAL HEX DUMBBELL RACKS



A classic in its own right, this HEX Dumbbell Rack offers gyms a convenient storage solution for full sets up to 30kg.

- Heavy, flat trays offer stability and a convenient storage space for HEX Dumbbells
- Made from mild steel with cushioned feet so as not to mark your floor
- Two tier rack can contain 10 pairs of dumbbells whilst the three tier rack houses 12 pairs of dumbbells
- Available in Matte Black, with powder coating available to match your own brand colour
- One-year warranty

### 2 TIER RACKS

<b>JTHDR-10 BLK</b>	10 pairs	H:805mm L:1630mm D:770mm
---------------------	----------	--------------------------

### 3 TIER RACKS

<b>JTHDR-12 BLK</b>	12 pairs	H:890mm L:1800mm D:760mm
---------------------	----------	--------------------------



25

JORDAN®

# BARBELLS





Jordan fixed barbells offer a time saving solution for gym addicts, and a super tidy solution for busy gyms and leisure spaces. With no changeover required these off-the-rack barbells are a great addition to any free weights area.

Choose from urethane or rubber; straight or curl bars, to offer your clients a variety of grip positions and movements to build strength effectively.

Add value to your barbells by fully customising them with your logo or brand colours, to take your gym to the next level.



## CUSTOM BRANDED URETHANE BARBELLS

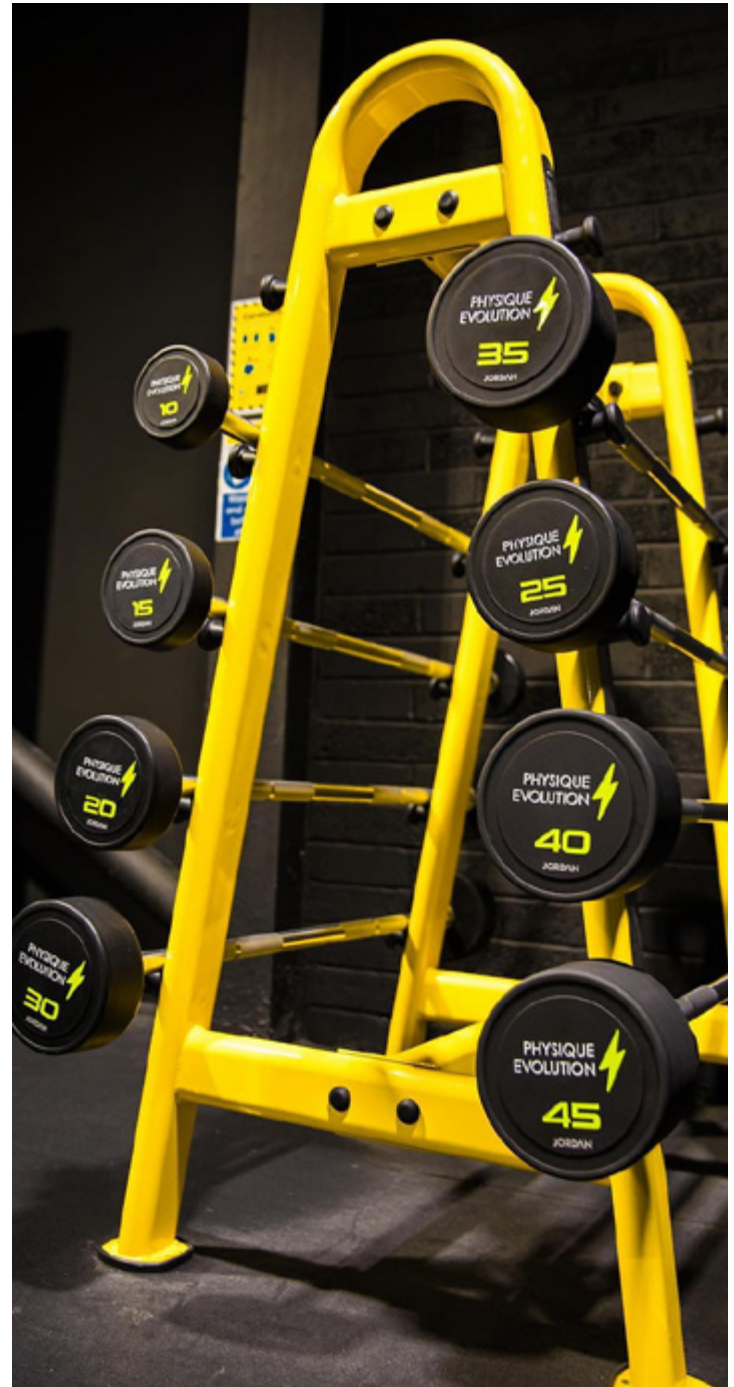
You can now add your logo, slogan, or for a lighter touch, your brand colour to our Jordan urethane barbell sets. Whether you are a gym, hotel, spa, sports club, university or a company with your own gym, you can fully tailor your design to match your brand.

- Classic circular barbells with ends encased in heavy-duty, odourless urethane.
- Barbell Sets include:
  - 2 x 10kg
  - 2 x 15kg
  - 1 x 20kg
  - 1 x 25kg
  - 1 x 30kg
  - 1 x 35kg
  - 1 x 40kg
  - 1 x 45kg
- Stylish and durable black urethane finish, known for its superior performance
- Easy grip handles (available as straight or curl bars)
- Three-year warranty

**Contact our dedicated customer sales team for a quote and design mock ups:**

**Call: +44 (0) 1553 763285**

**Email: [sales@jordanfitness.com](mailto:sales@jordanfitness.com)**





## IGNITE URETHANE BARBELLS



Unique to Jordan, our anti-roll fixed barbells are perfect for explosive exercises like power cleans and snatches as well as push ups.

- Strong and durable, featuring our unique anti-roll weights for added safety
- Perfect for an all over body workout and exercises such as deadlifts, rows, squats, and presses
- Straight heat-treated brushed steel bar with continuous knurling to ensure safety with sweaty hands
- Set includes 2x10kg, 2x15kg, 20kg, 25kg, 30kg, 35kg, 40kg, 45kg
- Superior five-year warranty



### STRAIGHT BARS

<b>JT-IUBS2-1N</b>	10 bars	10 - 45kg (5kg increments)
<b>JT-IUBS2-10</b>	10kg	Straight Bar
<b>JT-IUBS2-15</b>	15kg	Straight Bar
<b>JT-IUBS2-20</b>	20kg	Straight Bar
<b>JT-IUBS2-25</b>	25kg	Straight Bar
<b>JT-IUBS2-30</b>	30kg	Straight Bar
<b>JT-IUBS2-35</b>	35kg	Straight Bar
<b>JT-IUBS2-40</b>	40kg	Straight Bar
<b>JT-IUBS2-45</b>	45kg	Straight Bar

## PREMIUM URETHANE BARBELLS



Our toughest barbells yet, these newly designed urethane barbells won't be seen to scuff or mark your gym floor.

- New, improved design is available in straight or curl bars
- Heat-treated steel barbells coated in heavy duty and odourless urethane
- Great for a comprehensive number of upper-body strength exercises, from bicep curls to skull crushers and military press
- Full Set includes 2x10kg, 2x15kg, 20kg, 25kg, 30kg, 35kg, 40kg, 45kg
- Superior five-year warranty

### STRAIGHT BARS

**JLUBARSN4-P1** 10 bars 10 - 45kg (5kg increments)

### CURL BARS

**JLUBARCNC4-P1** 10 bars 10 - 45kg (5kg increments)

INDIVIDUAL BARS ARE ALSO AVAILABLE

## CLASSIC RUBBER BARBELLS



A staple for any gym, our fixed rubber barbells have a classic finish and are a perfect addition for any strength training workout.

- Compact one piece design encapsulated in stylish, smooth rubber offers a compact durable barbell with excellent balance
- Ideal for anyone on a budget looking for great value for money
- An EU and UK Registered Design, this barbell features a brushed steel bar (105cm) with easy grip handle knurling, available as straight or curl
- Full Set includes 2x10kg, 2x15kg, 20kg, 25kg, 30kg, 35kg, 40kg, 45kg
- Two-year warranty

### STRAIGHT BARS

**JTRBARSN2-1N-RC** 10 bars 10 - 45kg (5kg increments)

### CURL BARS

**JTRBARCNC2-1N-RC** 10 bars 10 - 45kg (5kg increments)

INDIVIDUAL BARS ARE ALSO AVAILABLE

## SINGLE-SIDED 5-BAR BARBELL RACK



Solid, space-saving barbell rack that can be neatly placed against your gym wall.

- Stable one-sided design that holds five barbells
- Internal bar supports adds strength and durability
- Self-assembly as standard, with installation / build available on request
- Available in two standard colours, Graphite Grey or Matte Black with our powder coating service available to match your own brand colour
- One-year warranty

### 5 BAR

**JTBR-07 GRY** Holds 5 bars H1460mm, L900mm, D670mm

**JTBR-07 BLK** Holds 5 bars H1460mm, L900mm, D670mm



1

2



## DOUBLE SIDED BARBELL RACKS



Sturdy and strong, our double sided barbell racks take pride of place anywhere on the gym floor.

- New sleek design available in addition to the classic oval frame finish
- Made from strong, durable steel this stable double-sided design holds 10 barbells – five on each side
- Self-assembly as standard, with installation / build available on request.
- Available in two standard colours, Graphite Grey or Matte Black with a powder coating service available to match your own brand colour
- One-year warranty

### 10 BAR

**JTBR-05 GRY** 1 Holds 10 bars H:1275mm L:875mm D:750mm

**JTBR-05 BLK** Holds 10 bars H:1275mm L:875mm D:750mm

**JTBR-10-GRY** 2 Holds 10 bars H:1275mm L:875mm D:750mm

**JTBR-10-BLK** Holds 10 bars H:1275mm L:875mm D:750mm

# OLYMPIC DISCS & PLATES





From Olympic standard lifting to everyday gym use, our Olympic Discs, Competition and Bumper Plates are designed to push the boundaries and achieve personal bests.

Our focus on quality and impact resistant weights means whether your clients are training for Weightlifting/Powerlifting competitions, or just adding to their strength training routine, we have you covered.

All plates are in line with IWF and IPF colour and size specifications.



## BLACK URETHANE COMPETITION PLATE - COLOURED TEXT



Designed to perfection, our urethane IWF industry-standard Olympic weightlifting, calibrated competition plates are as strong as they come.

- Stainless-steel insert with lightly glossed edges offers an alternative design to traditional Olympic discs, for gyms looking for a consistent design throughout their facility
- Raised colour lettering in standard Olympic colours, allow for quick weight identification
- Diameter of hole is 50.44mm, Outer diameter of the disc is 450mm
- Each disc calibrated to 1% weight accuracy
- Two-year warranty

### PRODUCT INFORMATION

<b>JLBCUP2-25</b>	25kg	Red - Coloured text
<b>JLBCUP2-20</b>	20kg	Blue - Coloured text
<b>JLBCUP2-15</b>	15kg	Yellow - Coloured text
<b>JLBCUP2-10</b>	10kg	Green - Coloured text

## CALIBRATED COLOUR RUBBER COMPETITION PLATE



Nothing else competes with the pure strength, quality and design of these IWF industry-standard Olympic weightlifting competition plates.

- Stainless-steel insert and durable solid 'Virgin Rubber' will not bend or crack through the high torque of Olympic weightlifting movements. Also, they won't damage Olympic training platforms
- Diameter of hole is 50.44mm, Outer diameter of the disc is 450mm
- Colour coded for easy identification: 10kg (green), 15kg (yellow), 20kg (blue) and 25kg (red)
- Each disc calibrated to 0.7% weight accuracy
- Two-year warranty

### PRODUCT INFORMATION

<b>JLCCRP2-25</b>	25kg	Red
<b>JLCCRP2-20</b>	20kg	Blue
<b>JLCCRP2-15</b>	15kg	Yellow
<b>JLCCRP2-10</b>	10kg	Green



## HG COLOUR RUBBER BUMPER PLATES



Incredibly strong and durable, these Olympic weightlifting bumper plates, made from shock absorbent rubber, have been tested to 10,000 drops.

- Unique design helps the gym-goer safely learn lifts like the snatch and clean and jerk by steering them into the correct, stable stance
- Constructed from high-grade coloured rubber for durability, featuring a clean, stylish aesthetic
- Colour coded by weight for easy identification
- Diameter of hole is 50.44mm, Outer diameter of the disc is 450mm
- One-year warranty

### PRODUCT INFORMATION

<b>JLCRTP2-25</b>	25kg	Red Rubber Bumper Plate
<b>JLCRTP2-20</b>	20kg	Blue Rubber Bumper Plate
<b>JLCRTP2-15</b>	15kg	Yellow Rubber Bumper Plate
<b>JLCRTP2-10</b>	10kg	Green Rubber Bumper Plate
<b>JLCRTP2-05</b>	5kg	Black Rubber Bumper Plate

## HG BLACK RUBBER BUMPER PLATES



Designed for deadlifts and Olympic weightlifting, these black rubber bumper plates are the perfect training aid, having been tested to 10,000 drops.

- Constructed from high-grade rubber, these shock absorbent plates won't bend or crack through the high torque of Olympic weightlifting movements, limiting damage to Olympic training platforms
- Rubber composition means virtual elimination of disc clattering
- Reinforced-steel centre sleeve affords accessible Olympic bar loading
- Diameter of hole is 50.44mm, Outer diameter of the disc is 450mm
- One-year warranty

### PRODUCT INFORMATION

<b>JLB RTP2-25</b>	25kg	Black Rubber Bumper Plate
<b>JLB RTP2-20</b>	20kg	Black Rubber Bumper Plate
<b>JLB RTP2-15</b>	15kg	Black Rubber Bumper Plate
<b>JLB RTP2-10</b>	10kg	Black Rubber Bumper Plate
<b>JLB RTP2-05</b>	5kg	Black Rubber Bumper Plate

## HG BLACK RUBBER BUMPER PLATE - COLOURED FLECK




Developed to reduce noise in your gym space, these Hi-Temp fleck coloured training weights not only look great, they are made from recycled rubber.

- Designed in line with International Weightlifting Federation (IWF) and International Powerlifting Federation (IPF) colour standards with lettering to match Olympic colours
- Impact resistant and hard wearing, these plates are less dense than other bumpers with higher bounce to reduce floor damage
- Hi-Temp, these weight plates are designed for high-intensity usage due to their durability
- Plates have a standard thickness whilst also featuring a hole diameter of 50.44mm / outer diameter 450mm
- One-year warranty

### PRODUCT INFORMATION

<b>JLFRCTP-25</b>	25kg	Red Fleck
<b>JLFRCTP-20</b>	20kg	Blue Fleck
<b>JLFRCTP-15</b>	15kg	Yellow Fleck
<b>JLFRCTP-10</b>	10kg	Green Fleck
<b>JLFRCTP-05</b>	5kg	Grey Fleck





**JLFRCTP-05**  
**HG BLACK RUBBER BUMPER**  
**PLATE - GREY FLECK**

## FRACTIONAL PLATES

---



Designed to deliver personal bests, this fractional set helps new weightlifters and pros alike, by adding smaller weights to track progress more effectively.

- Made from durable steel, these plates have been finished with easily distinguishable high gloss colours
- Essential weight training add-on for those looking to achieve higher weights at smaller intervals
- Perfect for Personal Trainers helping clients improve lifting capability at a steady pace
- Suitable size centre diameter to fit all standard Olympic bars
- One-year warranty

### PRODUCT INFORMATION

---

<b>JTFRACPL</b>	Set	2x5kg, 2x2.5kg, 2x1.5kg, 2x1kg, 2x0.5kg, 6x0.25kg
-----------------	-----	---

---

## TECHNIQUE PLATES

---



Full size, slimline Olympic Technique Plates available in 2.5kg and 5kg, perfectly designed for improving Olympic lifting technique lifts.

- Light weight material technique discs
- Full size [450mm diameter] for correct technique
- Durable one piece construction
- For use with Olympic Lifting Platform
- Available individually in 5kg (black) and 2.5kg (dark red)
- One-year warranty

### PRODUCT INFORMATION

---

<b>JLTP-05-NL</b>	5kg	Black
<b>JLTP-06-NL</b>	2.5kg	Red

---

## OLYMPIC HOLLOW TECHNIQUE PLATES

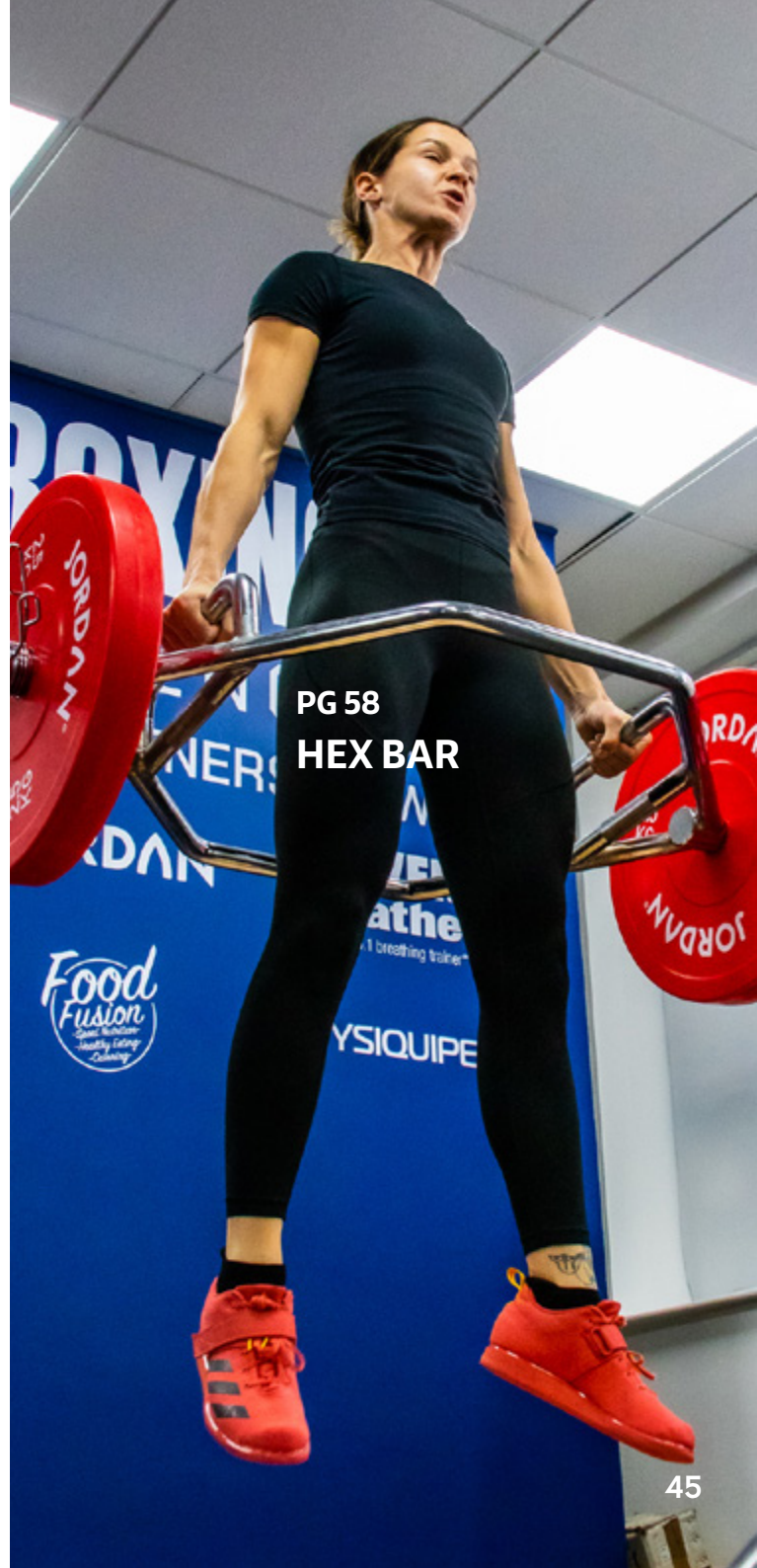


A great disc to learn explosive movements like the clean, snatch and dead lift. Excellent plates for beginners.

- Lightweight technique plate that's incredibly strong and durable thanks to the nylon and plastic construction
- Use with our Olympic platform
- International Weightlifting Foundation standard diameter of 450mm
- Designed for lifting (not dropping)
- Available as individual 2.5kg and 5kg discs
- One-year warranty

### PRODUCT INFORMATION

<b>JLTP2-05</b>	5kg	Red
<b>JLTP2-06</b>	2.5kg	White



**PG 58**  
**HEX BAR**

## IGNITE V2 URETHANE OLYMPIC DISCS



Innovative, registered anti-roll design, urethane Olympic discs with comfortable handle grips that elevate these discs above the norm.

- An EU and UK Registered Design, the cutting-edge, anti-roll technology, adds safety to your weight training session
- Spacious, ergonomic handles ensure more comfortable and stronger grip, while secure locking mechanism keeps the discs in alignment
- Available as individual discs from 1.25kg to 25kg as well as in sets from 200kg up to 1000kg
- Black texture with bold red as standard with the ability to customise with your own logo and brand colour
- Superior five-year warranty

### INDIVIDUAL DISCS

<b>JT-IUPV3-01</b>	25kg	<b>JT-IUPV3-05</b>	5kg
<b>JT-IUPV3-02</b>	20kg	<b>JT-IUPV3-06</b>	2.5kg
<b>JT-IUPV3-03</b>	15kg	<b>JT-IUPV3-07</b>	1.25kg
<b>JT-IUPV3-04</b>	10kg		

### OLYMPIC DISC SETS

<b>JT-IUPV3-P1</b>	1000kg set	10x10,25 16x1.25,2.5,20 14x15 12x5kg
<b>JT-IUPV3-P2</b>	400kg set	4x5,10,25 6x 15,20 8x 1.25,2.5kg
<b>JT-IUPV3-P3</b>	300kg set	2x 25 4x5,15,20 6x10 8x1.25,2.5kg
<b>JT-IUPV3-P4</b>	200kg set	2x15,20,25 4x2.5,5,10 8x1.25kg

## IGNITE V2 PREMIUM RUBBER OLYMPIC DISCS



Cutting-edge anti-roll, rubber Olympic discs with comfortable hand grips for additional usability for functional workouts.

- Innovative anti-roll design adds a safety and stylish edge to your weight training session (EU and UK Registered Design)
- Spacious, ergonomic handles ensure more comfortable and stronger grip, while secure locking mechanism keeps the discs in alignment
- Premium rubber coating minimises marking of gym surfaces and virtually eliminates clanking of discs.
- Available as individual discs from 1.25kg to 25kg as well as in sets from 200kg up to 1000kg
- Two-year warranty

### INDIVIDUAL DISCS

<b>JT-IRPV3-01</b>	25kg	<b>JT-IRPV3-05</b>	5kg
<b>JT-IRPV3-02</b>	20kg	<b>JT-IRPV3-06</b>	2.5kg
<b>JT-IRPV3-03</b>	15kg	<b>JT-IRPV3-07</b>	1.25kg
<b>JT-IRPV3-04</b>	10kg		

### OLYMPIC DISC SETS

<b>JT-IRPV3-P1</b>	1000kg set	10x10,25 16x1.25,2.5,20 14x15 12x5kg
<b>JT-IRPV3-P2</b>	400kg set	4x5,10,25 6x 15,20 8x 1.25,2.5kg
<b>JT-IRPV3-P3</b>	300kg set	2x 25 4x5,15,20 6x10 8x1.25,2.5kg
<b>JT-IRPV3-P4</b>	200kg set	2x15,20,25 4x2.5,5,10 8x1.25kg

## CLASSIC URETHANE OLYMPIC DISCS



## CLASSIC PREMIUM RUBBER OLYMPIC DISCS



Ergonomic grips and contemporary EU and UK Registered Design make this premium urethane disc a worthy addition to any free weights area.

- Stylish design features three contoured and comfortable hand grips
- Premium urethane coating doesn't mark
- Laser-etched logo and weight with custom branding available
- Plates range from 1.25kg to 25kg. Sets range from 200kg to 1000kg
- Superior five-year warranty

Timeless and great-value rubber plates that will appeal to gym newcomers and experienced bodybuilders alike (EU and UK Registered Design).

- Cast-iron construction and rubber coating increases durability
- Practical three-grip contoured design for easy and safe lifting
- Tapered design eliminates painful nipped fingers
- Plates range from 1.25kg to 25kg. Sets range from 140kg disc and bar set to 1,000kg
- Two-year warranty

### INDIVIDUAL PLATES

<b>JTOPU2-01</b>	25kg	<b>JTOPU2-05</b>	5kg
<b>JTOPU2-02</b>	20kg	<b>JTOPU2-06</b>	2.5kg
<b>JTOPU2-03</b>	15kg	<b>JTOPU2-07</b>	1.25kg
<b>JTOPU2-04</b>	10kg		

### OLYMPIC DISC SETS

<b>JTOPU2-P1</b>	400kg set	4x5,10,25 6x 15,20 8x 1.25,2.5kg
<b>JTOPU2-P2</b>	300kg set	2x 25 4x5,15,20 6x10 8x1.25,2.5kg
<b>JTOPU2-P3</b>	200kg set	2x15,20,25 4x2.5,5,10 8x1.25kg
<b>JTOPU2-P4</b>	1000kg set	10x10,25 16x1.25,2.5,20 14x15 12x5kg

### INDIVIDUAL PLATES

<b>JTOPR2-01</b>	25kg	<b>JTOPR2-05</b>	5kg
<b>JTOPR2-02</b>	20kg	<b>JTOPR2-06</b>	2.5kg
<b>JTOPR2-03</b>	15kg	<b>JTOPR2-07</b>	1.25kg
<b>JTOPR2-04</b>	10kg		

### OLYMPIC DISC SETS

<b>JTOPR2-P1</b>	400kg set	4x5,10,25 6x15,20 8x 1.25,2.5kg
<b>JTOPR2-P2</b>	300kg set	2x 25 4x5,15,20 6x10 8x1.25,2.5kg
<b>JTOPR2-P3</b>	200kg set	2x15,20,25 4x2.5,5,10 8x1.25kg
<b>JTOPR2-P4</b>	1000kg set	10x10,25 16x1.25,2.5,20 14x15 12x5kg
<b>JTOPR2-P6</b>	140kg set	4x1.25, 6x2.5, 2 x5,10,15,20 1x7ft Steel Series Bar, 2xSpring Collars

## CUSTOM BRANDED CLASSIC URETHANE OLYMPIC DISCS

If you want to offer weight plate workouts with extra flair, then our Olympic weightlifting discs hit the spot. Built for use with leg press machines and power squat racks, these long lasting, durable discs are also perfect for classic bench presses and squats.

- Premium polyurethane coating with laser-etched logo and weight
- Ergonomic grips and a contemporary stylish design make this premium Urethane Olympic Disc a worthy addition to any free weights area.
- Hundreds of RAL colours to choose from to match your brand
- Sets range from 200kg to 1000kg
- Superior five-year warranty

\*Ignite V2 Urethane Olympic Discs can also be customised

**Contact our dedicated customer sales team for a quote and design mock ups:**

**Call: +44 (0) 1553 763285**

**Email: [sales@jordanfitness.com](mailto:sales@jordanfitness.com)**







Through a rigorous tender process conducted during 2018, Jordan stood as out as the clear front runner to supply fitness accessories across all our new and existing gyms. Jordan's product innovation & quality, attention to detail and competitive pricing makes them a perfect long term partner for our business."

**Richard Annetts**  
**Model & Equipment Manager**  
**PureGym**

## OLYMPIC WEIGHT TREE



This solid and compact weight tree, holding up to 300kg, is the ultimate space-saver, enhancing the look and feel of any gym.

- Strong, stable and stylish oval steel frame with high-quality chrome bars, holding up to 50kg on each arm
- Rubber feet prevent slippage and leave no marks
- Stores Olympic weights ranging from 1.25kg to 25kg
- Available in two standard colours, Graphite Grey or Matte Black, with powder coating available to match your own brand colour
- One-year warranty

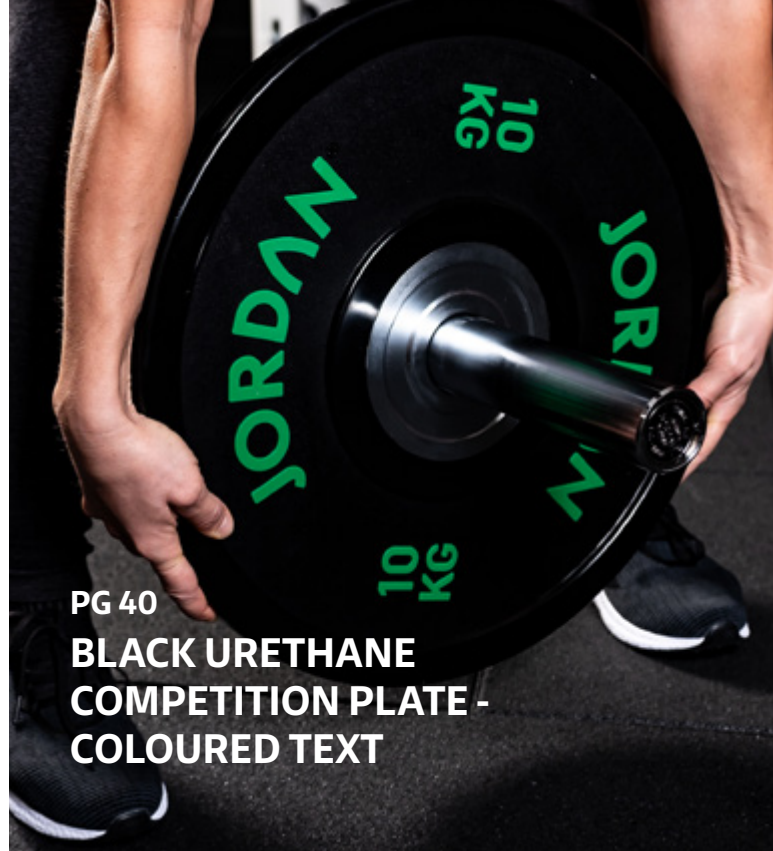
### PRODUCT INFORMATION

<b>JTOWT-05 GRY</b>	Grey	H:1300mm W:670mm D:900mm
<b>JTOWT-05 BLK</b>	Black	H:1300mm W:670mm D:900mm



## PG 42 HG BLACK RUBBER BUMPER PLATES - RED FLECK

## OLYMPIC TRAINING PLATE RACK



PG 40  
**BLACK URETHANE  
COMPETITION PLATE -  
COLOURED TEXT**

Featuring a sleek design, this bumper plate rack holds up to 10 bumper plates and collars, providing essential storage for your gym or leisure facility.

- Well crafted EU and UK Registered Design, includes a handle to the front and wheels to the rear for ease of mobility around your Olympic platforms
- Five storage compartments to hold 2X25KG, 2X20KG, 2X15KG, 2X10KG, 3X5KG
- Made from strong, mild steel, this bumper plate rack includes vertical polls offering Olympic collar storage for up to 4 pairs
- Available in black or grey, you can also choose to powder coat in any colour of your choice.
- One-year warranty

### PRODUCT INFORMATION

<b>JTRCTPR2 GRY</b>	Grey	H:305mm L:1400mm D:330mm
<b>JTRCTPR2 BLK</b>	Black	H:305mm L:1400mm D:330mm



# OLYMPIC BARS



Whether you're looking for bars for bodybuilding, improving technique, or to use as part of a functional training session, our Olympic Bars have been manufactured using the strongest materials available, for ultra-durability.

Perfect for professional Powerlifters/ Weightlifters, and gym users alike, when used alongside our bumper plates and Olympic discs, they provide everything needed for the ultimate strength training session.





**JTOTB  
HALF HEX TRAP BAR**

## HALF HEX TRAP BAR



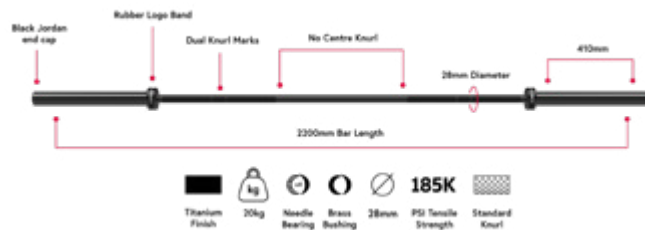
This new 7ft Open-Ended Trap Bar is a great alternative to the classic Hex Bar, the perfect partner for your deadlifting community.

- Includes integrated loading jack (with rubber feet) to ease the loading of your 50mm Olympic Bumpers and Discs
- Open-ended with double the handles (grips 28mm/50mm) to maximize hand positioning to work your biceps and triceps like never before
- Made from solid steel, powder-coated in a slick matte black finish
- Weight: 27kg Approx. Length: 2013mm Diameter: 50mm
- One-year warranty

### PRODUCT INFORMATION

**JTOTB** 7ft Open-ended Trap Bar

## OLYMPIC SHADOW BAR



Top of the range within our Olympic Bar collection, the Shadow Bar features a sleek, black coating, using the latest anti-rust technology to ensure longevity.

- A step ahead of classic chrome coatings, the titanium, high-temp salt-melted process gives the steel an extra surface hardness
- Counter diamond knurling for a soft, yet firm grip
- Tensile strength 185000 PSI this bar lifts up to 900kg
- Weighs: 20kg Length: 2,200mm Grip Diameter: 28mm
- One-year warranty

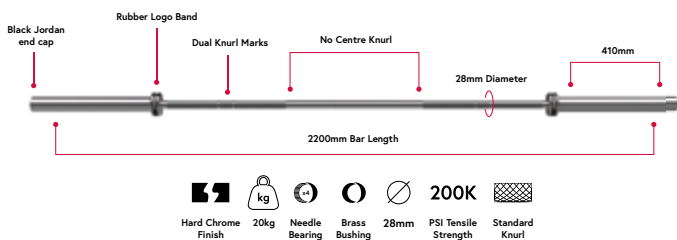
### PRODUCT INFORMATION

**JTBOB-87** 7ft Shadow bar (black cap)

## 7FT ULTIMATE MEN'S BAR



## 6FT ULTIMATE LADIES BAR

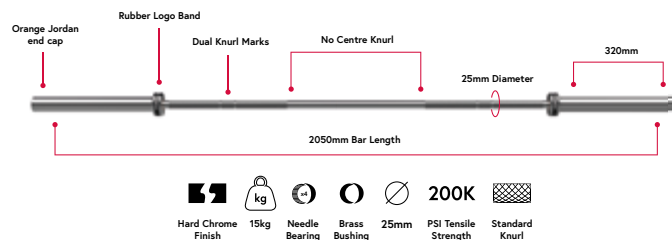


Competition standard, this durable and stylish bar withstands huge tensile strength

- 8-needle bearings increase spin whilst reducing friction and wear
- Constructed from hardened chrome and tested to 750kg (1,500lb)
- Impressive tensile strength of 200,000psi
- Features comfortable 28mm or 32mm grip
- Weighs 20kg. Length 2,200mm
- One-year warranty

### PRODUCT INFORMATION

<b>JLULTIMAM-01</b>	7ft	28mm grip (black cap)
<b>JLULTIMAM-02</b>	7ft	32mm grip (black cap)



Developed to women's Olympic standards, this weight training bar is ideal for those with smaller grip

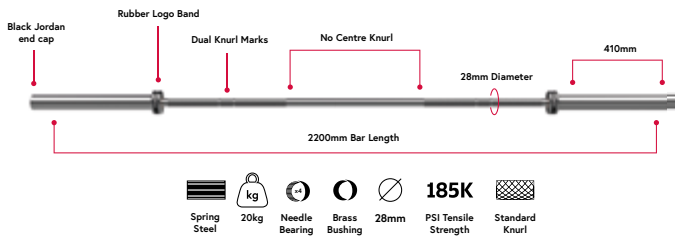
- 8-needle bearings increase spin whilst reducing friction and wear
- Constructed from hardened chrome and tested to 450kg (1,000lb)
- Incredible tensile strength of 200,000psi
- Features comfortable 25mm grip
- Weighs 15kg. Length 2,050mm
- One-year warranty

### PRODUCT INFORMATION

<b>JLULTIMAL-01</b>	6ft	28mm grip (black cap)
---------------------	-----	-----------------------



# ELITE STEEL HIGH PERFORMANCE OLYMPIC BAR



Perfect bar for explosive exercises like snatch, clean and jerk and deadlifts.

- Tough and hard-wearing bar constructed from spring steel with a robust, hardened chrome finish
- Highest quality bearings for smooth, reliable lifts of up to 970kg
- Ideal for a number of power-based, all-body exercises like snatch, power clean, clean and jerk, deadlifts, overhead press and many more
- Weighs 20kg. Length 2,200mm, Grip Diameter 28mm - Optimal weight and diameter to meet competition standards
- One-year warranty

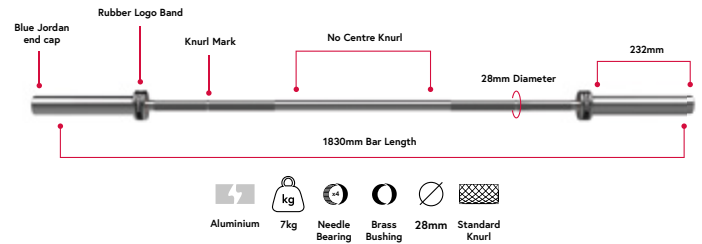
## PRODUCT INFORMATION

JTPOB-86

7ft

28mm grip (black cap)

# ALUMINIUM TRAINING BAR



Lightweight yet durable bar that's perfect for practising Olympic lifts.

- Impressive aluminium construction with a robust, hardened chrome finish
- Ideal bar for beginners and younger gym-goers to practise explosive Olympic lifts like a deadlift or a snatch. It can also be used for numerous all-over resistance exercises including the overhead squat, single-arm overhead press and high windmill
- Tested to 65kg (130lb). To be used with technique plates up to 5kg
- Weighs 7kg. Total Length 1,830mm, Grip Diameter 28mm
- One-year warranty

## PRODUCT INFORMATION

JTNB-72

6ft

28mm grip (teal cap)

## STEEL SERIES BARS

---

### A. TRICEP BAR

Perfect for performing Hammer Curls, this bar can be used to develop more than just your triceps. Used to work the muscles from different angles, it can also reduce injury compared to a classic barbell as it alleviates stress on your wrist and elbows. One-year warranty.

**JTNOB-34**

Total Length: 834mm, Internal Length: 474mm,  
End Length: 162mm Weight: 10.2kg

---

A



### B. HEX BAR

An alternative bar for performing the classic deadlift, this brushed steel bar with hardened chrome finish, develops grip strength and endurance, placing hands in an optimal, balanced position for performing the 'Shrug' and the 'Farmers Walk'. One-year warranty.

**JTNOB-HB72** 6ft

Total Length: 1824mm, Internal Length: 1263mm,  
End Length: 230mm Weight: 27.6kg

---

**JTNOB-HB86** 7ft

Total Length: 2180mm, Internal Length: 1302mm,  
End Length: 245mm Weight: 32.1kg

B



### C. SAFETY SQUAT BAR

This incredible training device is ideal for working the upper and lower back in addition to your legs. Helping to address weak points in your squat, you can really target muscles whilst safely building strength. One-year warranty.

**JL-SFSB**

Total Length: 2200mm, Internal Length: 1330mm,  
End Length: 300mm Weight: 21kg

---

C



## STEEL SERIES BARS

Three fantastic bars come in three different shapes depending on the exercises and your personal grip preference.

- Quality and strong set of steel bars complete with a hardened chrome finish that's significantly more robust than previous designs
- Precision bearings guarantee a smoother rotation with each and every lift
- Forge impressive biceps and triceps with a variety of strength exercises including the wide-grip standing curl, standard-grip curl and overhead triceps extension
- Build broad, powerful shoulders with exercises like overhead shoulder press
- 7ft steel series bar tested up to 681kg/1,500lbs
- One-year warranty

### A. BARS WITH BEARINGS

<b>JTNB-86-15</b>	7ft	Total Length: 2200mm, Internal Length: 1325mm, End Length: 410mm Weight: 21.5kg
-------------------	-----	---

<b>JTNB-72-7</b>	6ft	Total Length: 1830mm, Internal Length: 1260mm, End Length: 245mm Weight: 16kg
------------------	-----	---

<b>JTNB-60-7</b>	5ft	Total Length: 1530mm, Internal Length: 965mm, End Length: 250mm Weight: 14.5kg
------------------	-----	--

### B. CURL BAR WITH BEARINGS

<b>JTNB-48</b>	Total Length: 1210mm, Internal Length: 785mm, End Length: 120mm Weight: 9kg
----------------	---

### C. SUPER CURL BAR WITH BEARINGS

<b>JTNB-48S</b>	Total Length: 1210mm, Internal Length: 785mm, End Length: 120mm Weight: 9kg
-----------------	---

A



B



C



## OLYMPIC BAR HOLDER



Highly practical and stylish Olympic bar holder, it's a great space-saving alternative to the wall mounted bar holder.

- Holds up to nine Olympic bars
- EU and UK Registered Design, featuring square shape, adds strength
- Made from mild steel featuring plastic inserts so as not to scratch bars
- Available in two standard colours, Graphite Grey or Matte Black, with powder coating available to match your own brand colour
- Weight: 23.5KG Dimensions: 385 x 385 x 160cm
- One-year warranty

### PRODUCT INFORMATION

<b>JTBR2-11 GRY</b>	19kg	Holds 9 bars
<b>JTBR2-11 BLK</b>	19kg	Holds 9 bars

## WALL MOUNTED OLYMPIC BAR HOLDER



A perfect way to save space in smaller gyms, present your Olympic bars in style with our solid steel wall mounted bar rack.

- Holds 6 Olympic bars
- Suitable for load bearing or solid walls
- Great solution for gyms short on floor space
- Available as standard in Graphite Grey or Matte Black, you can also colour to match your brand.
- Height 870mm, Length 140mm, Depth 60mm
- One-year warranty

### PRODUCT INFORMATION

<b>JLWMBR GRY</b>	Grey - Holds 6 bars
<b>JLWMBR BLK</b>	Black - Holds 6 bars

## OLYMPIC COLLARS 50MM (PAIRS)



### OLYMPIC SPRING COLLARS 50MM (PAIR)

Cost-effective light weight collars.

- Suitable for Olympic bars with 50mm diameter, while rubber ends increase strength of grip
- Spring steel with chrome finish, this proven design has made this a favourite for coaches and athletes alike
- One-year warranty



### OLYMPIC CLAMP COLLARS 50MM (PAIR)

Secure and easy-to-use clamp collar.

- Perfect for securing Olympic plates onto a 50mm Olympic bar via a simple 'twist and lock' system
- Red plastic composition to virtually eliminate bar damage compared to conventional collars
- One-year warranty



### OLYMPIC QUICK LOCK COLLARS 50MM (PAIR)

Secure and easy-to-use clamp collar.

- Perfect for securing Olympic plates onto a 50mm Olympic bar via a simple 'click and lock' system
- Black plastic composition to virtually eliminate bar damage compared to conventional collars
- One-year warranty

### PRODUCT INFORMATION

<b>JTC-03</b>	Olympic spring collars 50mm (pair)
<b>JLOCC</b>	Olympic clamp collars 50mm (pair)
<b>JLQLC-01</b>	Quick lock collars (pair)

## OLYMPIC LIFTING PLATFORM



The perfect platform for Olympic weight-training at any gym, hotel, school or sports club, with the ability to customise to enhance your lifting space.

- Wooden centre section is flanked on both sides with thick rubber to improve stability and reduce slipping
- The highly absorbent surface not only protects your bars and bumper plates, but also the floor underneath
- Great for a variety of weight-training exercises
- Choose from a variety of colours for your edges (may incur extended lead time)
- Engrave your logo into the wood for maximum impact (additional cost)
- Weight 283kg Length 2,400mm, Width 2,000m, Height 60mm
- Lifetime warranty on frame, one-year warranty on wood centre

### PRODUCT INFORMATION

**JL-4099/1**

Olympic lifting platform

## OLYMPIC LIFTING OAK CENTRE



For facilities looking to integrate their weightlifting platforms into their flooring, our oak centre platform centre offers a sophisticated seamless finish.

- Platform integrates perfectly alongside our Activ 30mm flooring (see page 170 for full range of flooring available)
- Great for a variety of weight-training exercises including squats and deadlifts
- Highly absorbent surface protects your bars and bumper plates
- Choose to engrave your logo or brand values into the oak surface for maximum impact (additional cost)
- Length 2,000mm, Width 1,000m, Height 30mm
- One-year warranty

### PRODUCT INFORMATION

**JL-OLOC**

Olympic lifting oak centre

PG 72  
PERFORMANCE RACKS



JL-OLOC  
OLYMPIC LIFTING OAK  
CENTRE

PG 175  
PREMIUM TURF

OLYMPIC DUMBBELL  
BAR

---



Perfect for home use as well as a great addition to any commercial gym space, ideal for rows, presses and flies.

- Adjust your weight throughout each and every workout using these quality, steel dumbbell handles
- Used for bodybuilding, CrossFit, functional training as well as standard strength dumbbell exercises
- Made from solid steel, featuring diamond knurling for extra grip with chrome coated sleeves for commercial durability (for plate loading)
- Weight 5kg. Grip: 28mm
- One-year warranty

PRODUCT INFORMATION

JTBOB-87

510 mm Olympic Dumbbell Bar

---



### OLYMPIC NECK PAD

This affordable neck pad is designed to fit all of our Olympic bars.

- Eliminates neck strain when performing squats
- Its 390mm x 80mm size fits all Olympic bars
- 90-day warranty

### PRODUCT INFORMATION

JTNP

Olympic Neck Pad



### WEIGHT TRAINING DIPPING BELT

Classic-looking leather training support belt.

- Added 6-inch central back section increases lower-back support without limiting pelvic rotation. Also allows the user to add additional weight resistance up to 40kg
- Heavy-duty rivets hold in place the chrome-plated welded chain-link attachment. One-year warranty

### PRODUCT INFORMATION

JLWLBC

Weight Training Dipping Belt



JTPCT2-BLK  
PORTABLE CORE  
TRAINER



## CORE PLATE



Multi-use core plate which includes a rope anchor for battle rope and powerbands to complement the huge number of strength-building exercises including land mine squats.

- Great for a variety of exercises including T-bar rows that allow a more upright position to place less stress on your back
- Stylish steel plate with textured finish that accommodates Olympic bars (sold separately)
- Extra-heavy base plate that provides peace of mind and stability
- Anti-slip rubber base adds stability as well as protecting the floor beneath as well as fixing holes for permanent floor fixing
- Length 500mm, Depth 450mm. Weighs 22.5kg
- One-year warranty

### PRODUCT INFORMATION

<b>JTCP2-GRY</b>	Core plate	Grey
<b>JTCP2-BLK</b>	Core plate	Black



## PORTABLE CORE TRAINER



Highly effective way to improve core strength, stability, rotational strength and upper-body mobility... and it's portable!

- No need for screws or fixings, allows you to train at home, in the office, on the training ground, on the road...
- Perfect for use with Olympic bars and plates (available separately)
- With its EU and UK Registered Design, its ideal for rotational exercises and presses for core strength. Exercises include core rotations, wood chops, multi-directional lunges, landmine squats and many more
- New and sleek design is super lightweight and a great space saver
- Weighs just 1kg, so it really is portable (Length 255mm, Width 62mm, Internal Depth 150mm)
- One-year warranty

### PRODUCT INFORMATION

<b>JTPCT2-GRY</b>	Portable core trainer	Grey
<b>JTPCT2-BLK</b>	Portable core trainer	Black

## CORE PLATE HANDLE

- For use with the Core Plate and Portable Core Trainer
- One-year warranty

### PRODUCT INFORMATION

<b>JTCPH GRY</b>	Core plate handle	Grey
<b>JTCPH BLK</b>	Core plate handle	Black

# GYM RIGS & RACKS



## PG 66 FUNCTIONAL RIGS

- PG 68 Wall Squat Rig
- PG 68 Monkey Bar Rig
- PG 69 Wall Mounted Ignite Rig
- PG 69 Ignite Training Rig
- PG 70 Ignite Rig Attachments
- PG 71 BOX12 Pod
- PG 72 Performance Racks
- PG 73 Rack Attachments



## IGNITE® RIG SERIES



## WALL SQUAT RIG

This Wall Squat Rig is a great space saver for gyms with a small foot print. Manufactured in the UK to the highest specification, this Squat rig is customisable with over 200 RAL colours to choose from.

A full range of attachments and accessories are available. Installation not included. Please contact us for a quote and for further information on customisation.

### PRODUCT INFORMATION

**JL-IGWSR IHP** Ignite Wall Squat Rig  
Dimensions: D:1888mm H:2461mm W:1297mm  
Manufactures lead time: 4 to 6 weeks  
Lifetime warranty on frame  
Includes: Squat attachment, J Hooks, Safety spot arms & Pull up bar

**JL-IGMBR IHP** Ignite Monkey bar rig  
Dimensions: D:4861mm H:2761mm W:1558mm  
Manufactures lead time: 4 to 6 weeks  
Lifetime warranty on frame  
Includes: Attachment Loops, Monkey bars & Pull-up bar

**JL-IGWR IHP** Ignite wall rig  
Dimensions: D:3650mm H:2826mm W:3650mm  
Manufactures lead time: 4 to 6 weeks  
Lifetime warranty on frame  
Includes: Attachment Loops, Pull-up Bar & Punch Bag Fixing Point



## MONKEY BAR FUNCTIONAL RIG

This free standing monkey bar functional rig is a great centre piece for any functional gym space.

With a premium look and finish, and the option to choose up to 2 colours to ignite your brand, this rig is an ideal fit for any commercial facility or functional training area. Manufactured in the UK to the highest specification.

A full range of attachments and accessories are available. Installation not included. Please contact us for a quote and for further information on customisation.



## WALL MOUNTED IGNITE RIG

If you haven't the space for a full size functional training rig, our Wall Mounted Ignite Rig offers a range of functional stations whilst only taking up half the room.

Choose your colour from a large range of RAL colours, all powder coated to match your brand and style. Two colour option also available.

All other attachments including Hatton Boxing Bags and accessories sold separately.

Contact us for a space review and further information.



## IGNITE® TRAINING RIG

The Ignite Rig is the flagship of our Functional Training Rig range. It's premium look and finish make it a fantastic centrepiece for any facility or functional training area. Manufactured in the UK to the highest specifications, the Ignite Rig can be fully customisable with a variety of options, accessories, colours and textures.

The Ignite Rig comes loaded with the following as standard, before adding your own options:

- Full Length Monkey Bar Run
- Pull Up Bar
- Boxing Bag Fixing Point
- Side Ladders x2
- Two colour options (primary and secondary colour choice)

Lead Time: 6-8 weeks

It is recommended that the rigs be secured to suitable floor and wall. Please ensure sufficient suitability of floor/wall and ceiling height.

### PRODUCT INFORMATION

- JL-IGNITERIG** Ignite Rig  
Dimensions: D:3650mm H:2826mm W:3650mm  
Manufactures lead time: Up to 6 weeks  
Lifetime warranty on frame  
Includes: Full length monkey bar run, pull up bar, punch bag fixing point, side ladders x 2, two colour options.



# IGNITE® RIG ATTACHMENTS



Climb, jump, push, pull, squat and swing your way into the new you with our range of ignite attachments.

## IGNITE RIG ATTACHMENTS

<b>JL-IGNITE-005</b>	1	Dipping attachment
<b>JL-IGNITE-010</b>	2	Step attachment
<b>JL-IGNITE-015</b>	3	Core plate (no bar storage)
<b>JL-IGNITE-020</b>		Ladder (Max 2)
<b>JL-IGNITE-025</b>		Ball storage (Max 6 per ladder)
<b>JL-IGNITE-030</b>		Kettlebell storage (max 6 per ladder)
<b>JL-IGNITE-035</b>	4	Squat attachments (Including J-Hooks)
<b>JL-IGNITE-040</b>	5	Squat safety spot arms (pair)
<b>JL-IGNITE-045</b>		Vertical Rail (Max 6 per ladder)
<b>JL-IGNITE-050</b>		500 Utility bar
<b>JL-IGNITE-055</b>		1000 Utility bar
<b>JL-IGNITE-075</b>	6	Rebound board
<b>JL-IGNITE-080</b>		Rope climb attachment (including rope)
<b>JL-IGNITE-RPAT</b>	7	Rope pull attachment (not including rope)
<b>JL-IGNITEROPE</b>		Rope for rope pull attachment
<b>JL-IGNITE-082</b>		Rebound wall
<b>JL-ATT-6010</b>		Bar Storage
<b>JL-ATT-CS-090</b>		Punch bag arm

## IGNITE WING ATTACHMENTS

<b>JL-IGNITE-IG45</b>	8	1m 3 bar wing 45deg (32mm grip)
<b>JL-IGNITE-IG10</b>	9	1m 3 bar wing 10deg (32mm grip)





**WATCH IT IN  
ACTION NOW**

## BOX12 POD



If you're looking to give your gym facility the edge, whilst offering a Boxing HIIT workout like no other, the new BOX12 Pod will be just up your street.

Offering a full Boxing Rig with an Aqua Bag and integrated storage for all your functional kit, this impressive unit comes with an interactive touch screen with 6 x preloaded BOX12 workouts. If you want to give your clients the freedom to train independently, this setup is ideal for those who cannot attend a class or prefer to train solo whilst receiving guidance and expert instruction.

You can customise your rig to suit your needs, choosing the weights that work best for you, with the following available as a standard package:

- Freestanding Boxing Frame (H: 2250mm, D: 1313mm; W: 1660mm)
- 22" Touch screen
- 3 x Slam Balls – 5/7/12kg
- 4 x Kettlebells – 8/12/16/20kg
- 4 x Dumbbells (pairs) – 4/8/12/16kg
- 3 x Sandbags – 10/15/20kg
- 1 x Aqua Bags

### PRODUCT INFORMATION

**JF-BOX12BRIG-BLK** Black H: 2250mm, D: 1313mm; W: 1660mm

# PERFORMANCE RACKS



From racks and quarter/half racks, to our space-saving foldaway rack, our performance range is suitable for commercial training facilities and are also perfect for home and garage gyms.

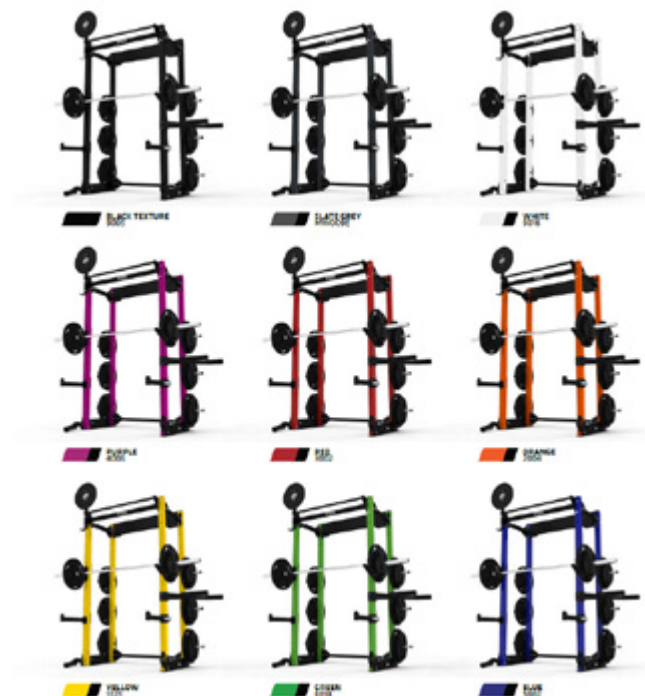
Manufactured in the UK, our Performance Racks are engineered to the highest level of classification (ISO 9001:2008 and ISO 9001: 2015) and all come with an industry-leading lifetime frame, and weld guarantee.

Built to current EN 957 and EN ISO 20957 Stationary Training Equipment standards, our racks are fabricated by experienced, accredited CHAS Contractors (the industry-leading contractor health & safety certification in the UK) – as when it comes to Jordan, only premium quality will do.

Lead Time: 6-8 weeks

It is recommended that the rigs be secured to suitable floor and wall. Please ensure sufficient suitability of floor/wall and ceiling height.

## COLOUR OPTIONS



## PRODUCT INFORMATION

<b>JLPR-FR</b>	1	Folding Rack (black)
<b>JLPR-HR2.2</b>	2	Half Rack (black)
<b>JLPR-HR2.5</b>	2	Half Rack (black)
<b>JLPR-PR2.2</b>	3	Power Rack (black)
<b>JLPR-PR2.5</b>	3	Power Rack (black)
<b>JLPR-WR2.2</b>	4	Wall Rack (black)
<b>JLPR-WR2.5</b>	4	Wall Rack (black)





## ATTACHMENTS

<b>JLPR-DA</b>	<b>1</b>	Dip Attachment
<b>JLPR-SSAA</b>	<b>2</b>	Safety Spot Arms
<b>JLPR-JHA</b>	<b>3</b>	J-Hooks
<b>JLPR-ELA</b>	<b>4</b>	E Series Landmine
<b>JLPR-EXLA</b>	<b>4</b>	Ex Series Landmine
<b>JLPR-SLA</b>	<b>5</b>	Single Loop attachment
<b>JLPR-BHA</b>		Bar Hook
<b>JLPR-BSA</b>		Bar Storage
<b>JLPR-CB-180</b>		180 Connecting bar
<b>JLPR-WHA</b>	<b>6</b>	Weight Horn Attachment
<b>JLPR-CWHA</b>	<b>6</b>	Chrome Weight Horn Attachment



CHOOSE FROM A RANGE OF COMBINATIONS.



CALL US FOR A QUOTE

# BENCHES & MACHINES



## **PG 74** BENCHES & MACHINES

- PG 76 Fusion HIIT Bench
- PG 78 Adjustable Benches
- PG 79 Flat & Utility Benches
- PG 80 Olympic Benches
- PG 83 Olympic Power Rack



- PG 84 Leg Machines
- PG 86 Preacher Curler
- PG 86 Squat Stand
- PG 87 I-Series Bench
- PG 88 Dual Adjustable Pulley
- PG 90 Cable Attachments



# FUSION HIIT BENCH

### 3-in-1 Functional training station, bench & storage

Unique to Jordan, our space saving HIIT bench has everything you need to develop fast paced HIIT group training sessions as well as being the superstar of the gym floor.

This compact multi-functional exercise bench was built to challenge, with space for 2 Kettlebells, a Medicine Ball, skipping rope or stretch bands as well as a choice of Dumbbells (with room for 5 pairs).

- Featuring EU and UK Registered Design, this exceptional bench is made in the UK from high quality mild steel with durable foam pads, doubling up as a comfortable adjustable bench and firm plyo box
- Includes a rope attachment so you can offer the ultimate battlerope or resistance band workout (with up to 6 users around 1 bench)
- Handle with lockable wheels ensures ease of movement for when used as part of a class setting.
- The shape and size is optimal for boutique, PT gyms and studios, as well as traditional gym settings.
- Choose to customise your HIIT bench with a choice of colour rims and add your logo to the matt finished steel frame.
- One-year warranty on bench, 90 days warranty on upholstery



#### PRODUCT INFORMATION

<b>JLHB-01</b>	Unfilled	L:1361mm W:512mm D:392mm
<b>JLHB-02</b>	Unfilled - With Core Trainer	L:1381mm W:512mm D:392mm

#### CHOOSE YOUR



COLOUR & LOGO

#### CHOOSE YOUR



DUMBBELLS

#### CHOOSE YOUR



KETTLEBELLS

#### CHOOSE YOUR



BALL

#### CHOOSE YOUR



EXTRAS

## ADJUSTABLE BENCH



Versatile bench for a huge number of upper-body strength exercises.

- Perfect for a variety of upper-body exercises including bicep curls, bench press, shoulder press, chest flies etc
- Classic flat and incline positions, as well as decline. In all, there are seven starting positions with adjustment ranging from -5° to 85°
- Solid and durable construction with foam padding offering excellent levels of comfort
- Made in the UK
- The compact design makes this adjustable bench a great space saver and simple to move, making it suitable for any gym
- One-year warranty on frame, 90 days warranty on upholstery

### COLOUR OPTIONS

<b>JL-AB-BLK</b>	Black	L:1285mm W:624mm H:1209mm (max)
<b>JL-AB-GRY</b>	Grey	L:1285mm W:624mm H:1209mm (max)

## ADJUSTABLE DECLINE BENCH



A must for any gym, this commercial quality bench for use with free weights, is perfect for building upper-body strength.

- High density foam padded rollers for leg support
- Durable fine grade upholstery to ensure maximum comfort and protection
- Solid and durable construction with a tapered seat pad for added hip support.
- Quick and easy to adjust
- Provides placement for a spotter to encourage prime workout positioning and safety
- One-year warranty on frame, 90 days warranty on upholstery

### COLOUR OPTIONS

<b>JL-ADB-BLK</b>	Black	L:1229mm W:660mm H:845mm
<b>JL-ADB-GRY</b>	Grey	L:1229mm W:660mm H:845mm

## FLAT BENCH

---



Classic weight bench for a comprehensive range of strength-based exercises.

- Ideal for use with dumbbells, barbells and EZ curl bars for strength training
- Also suitable for any number of strength and flexibility-based exercises
- Low bench height is the optimum position to develop pectoral muscles
- Precision engineered from top-grade steel and extremely stable
- Quality upholstery and rubber feet that don't mark the floor
- One-year warranty on frame, 90 days warranty on upholstery

### COLOUR OPTIONS

<b>JL-FB-BLK</b>	Black	L:1242mm W:630mm H:472mm
<b>JL-FB-GRY</b>	Grey	L:1242mm W:630mm H:472mm

## UPRIGHT UTILITY BENCH

---



Take your upper-body strength to another level with this quality upright utility weights bench.

- Perfect for use with dumbbells, barbells and EZ curl bars for strength training, especially shoulder and arm workouts
- Slightly angled back pad increases comfort and doesn't interfere with overhead exercises
- Durable and sturdy bench that's expertly crafted from high-grade steel
- Quality upholstery and rubber feet that don't mark the floor
- The compact design makes this upright utility bench a great space saver and simple to move, making it suitable for any gym
- One-year warranty on frame, 90 days warranty on upholstery

### COLOUR OPTIONS

<b>JL-UUB-BLK</b>	Black	L:713mm W:630mm H:1043mm
<b>JL-UUB-GRY</b>	Grey	L:713mm W:630mm H:1043mm

## OLYMPIC FLAT BENCH



Comfortable, stable and quality bench for upper-body strength exercises.

- Flat bench to help you really target those pectoral and tricep muscles with two catch bar positions
- Low bench height and recessed area provides room for a spotter.
- This is the optimum height to maximise each and every workout
- Durable and sturdy bench that's expertly crafted from high-grade steel
- Quality fine-grade upholstery for added comfort and rubber feet that don't mark the floor
- One-year warranty on frame, 90 days warranty on upholstery

### COLOUR OPTIONS

<b>JL-OFB-BLK</b>	Black	L:1601mm W:1294mm H:1200mm
<b>JL-OFB-GRY</b>	Grey	L:1601mm W:1294mm H:1200mm

## OLYMPIC INCLINE BENCH



Fine-grade upholstery adds a touch of class and comfort to strengthening your chest muscles.

- Fixed incline of 40° is perfect to target the upper pectorals and shoulders with either dumbbells, barbells or EZ curl bars
- Two catch bar positions
- Recessed area provides room for a spotter
- Quality fine-grade upholstery for added durability, comfort and protection, plus rubber feet that don't mark the floor
- Adjustable seat. Choose from three positions depending on your height
- One-year warranty on frame, 90 days warranty on upholstery

### COLOUR OPTIONS

<b>JL-OIB-BLK</b>	Black	L:1601mm W:1294mm H:1200mm
<b>JL-OIB-GRY</b>	Grey	L:1601mm W:1294mm H:1200mm



## OLYMPIC DECLINE BENCH



Strong, stable and sleek decline weight bench to strengthen your chest.

- Decline position means you can give your chest a more-rounded strength workout with two catch positions to hold the bar
- Recessed area provides room for a spotter
- Quality fine-grade upholstery for added durability, comfort and protection
- High-density foam rollers add comfort when securing your legs
- Rubber feet that don't mark the floor
- One-year warranty on frame, 90 days warranty on upholstery

### COLOUR OPTIONS

<b>JL-ODB-BLK</b>	Black	L:1990mm W:1294mm H:1199mm
<b>JL-ODB-GRY</b>	Grey	L:1990mm W:1294mm H:1199mm

## OLYMPIC SHOULDER PRESS BENCH



Forge stronger, more powerful shoulder muscles with this quality bench.

- Geometry of stand and angle of back pad is perfect for maximising strength gains from the shoulder press
- Comfortable and quality upholstery for added durability, comfort and protection
- Seat position can be adjusted to suit all heights
- Two-position bar catches, again to suit all heights
- Rubber feet that don't mark the floor
- One-year warranty on frame, 90 days warranty on upholstery

### COLOUR OPTIONS

<b>JL-OSPB-BLK</b>	Black	L:1033mm W:1293mm H:1668mm
<b>JL-OSPB-GRY</b>	Grey	L:1033mm W:1293mm H:1668mm



# JORDAN LIFTING CLUB

One thing we all have in common is that everybody has the potential to develop their strength and feel stronger, both physically & mentally. We've strength in numbers, which is why we've created the Jordan Lifting Club - a new community of lifting legends - to offer a strength support network, plus the bonus of affordable, quality kit you can rely on.....

Find out more on the Website:  
[www.jordanliftingclub.com](http://www.jordanliftingclub.com)

## OLYMPIC ADJUSTABLE MULTI-BENCH



Versatile and incredibly strong bench that's suitable for all athletes and gym-goers looking to increase upper-body strength and power.

- Seven levels of adjustment covering flat, incline and decline positions for a huge range of exercises including incline/decline bench press, shoulder press, reverse grip bench press...
- Levels of adjustment range from -5° to 80°
- Perfect position guaranteed whatever the strength exercise thanks to indispensable guide rail
- Seven multi-position bar catchers plus four Olympic weight storage horns
- Thick oval-section steel ensures durability and stability
- One-year warranty on frame, 90 days warranty on upholstery

### COLOUR OPTIONS

<b>JL-OAMB-BLK</b>	Black	L:1285mm W:1790mm H:1800mm
<b>JL-OAMB-GRY</b>	Grey	L:1285mm W:1790mm H:1800mm

## OLYMPIC POWER RACK



The ultimate all-body rack that comes at a great price and offers more working room than comparable power racks.

- Suitable for an extraordinary amount of upper body and lower-body exercises including squats, barbell bent-over row, barbell curl, pull-ups and overhead press
- Oval steel construction – specifically the upper bars – is ideal for bodyweight suspension systems like Jungle Gym XT
- Includes the following: core plate/land-mine functional trainer (built in); removable dipping bars; six integrated band training loops for progressive resistance (both top and bottom); 11-bar racking height adjustments; large internal training area of 925mm; eight integrated weight storage bars (50mm); and narrow 30mm-grip chin bars with non-slip grips
- Suitable for Olympic Platform (see page 62)
- One-year warranty on frame

### COLOUR OPTIONS

<b>JTPR BLK</b>	Black	L:1290mm D:1680mm H:2445mm
<b>JTPR GRY</b>	Grey	L:1290mm D:1680mm H:2445mm

## SEATED CALF RAISE



Develop sculpted calf muscles or sports-specific power with this stable and compact piece of quality gym equipment.

- Lock in to the perfect position thanks to the adjustable and comfortable thigh pad
- Specific focus on the soleus muscle rather than the gastrocnemius muscle (that make up the calf-muscle area) because of the seated position
- Beautifully engineered with a heavy-duty steel frame and quality components
- Conveniently placed handles provide stable base to maximise exercise
- Angled weight horn allows for easier loading and unloading of Olympic plates
- One-year warranty on frame, 90 days warranty on upholstery

### COLOUR OPTIONS

<b>JL-SCR-BLK</b>	Black	L:1370mm W:660mm H:980mm
<b>JL-SCR-GRY</b>	Grey	L:1370mm W:660mm H:980mm

## GLUTE/HAM DEVELOPER



No-nonsense, extremely stable piece of gym equipment that strengthens and shapes glutes and hamstrings.

- Unique split-pad design increases comfort and retains stability
- Dual rollers provide mid-section and ankle support
- Multi-adjustable to suit all users
- Low-profile, solid frame perfect for all gym and home gym environments
- Great for all but particularly useful for team sports people like footballers and rugby to develop hamstrings and avoid injury
- One-year warranty on frame, 90 days warranty on upholstery

### COLOUR OPTIONS

<b>JL-GHD-BLK</b>	Black	L:1370mm W:870mm H:1070mm
<b>JL-GHD-GRY</b>	Grey	L:1370mm W:870mm H:1070mm

## SISSY SQUAT



Built to remove the difficulty of performing a sissy squat whilst developing all those lower body muscles.

- Perfect addition to the gym floor for developing quads and glutes.
- Easily place calves against the pad and squat deep, great for isolating the 'tear drop'.
- High grade foam rollers and pad to provide cushioning for your lower legs
- Robust, heavy-grade flat oval steel frame with a powder coat finish.
- Add weights with high reps to intensify a lower body training session
- One-year warranty on frame, 90 days warranty on upholstery

### COLOUR OPTIONS

<b>JL-SS-BLK</b>	Black	L:1160mm W:670mm H:510mm
<b>JL-SS-GRY</b>	Grey	L:1160mm W:670mm H:510mm

## 45 DEGREE HYPER EXTENSION



Vital but understated training equipment that strengthens lower back for peak sporting performance and eases, or prevents, spinal issues.

- Dual foot rollers clamp you in comfortably and also steer you into the perfect angle
- Adjustable pad suits all heights
- Anti-slip rubber feet mean extra stability and no slippage
- Can be used with dumbbells, sandbags or medicine balls
- Back strength is at the heart of sporting performance, be it sprinting, endurance events or bodybuilding
- One-year warranty on frame, 90 days warranty on upholstery

### COLOUR OPTIONS

<b>JL-HE-BLK</b>	Black	L:1230mm W:660mm H:845mm
<b>JL-HE-GRY</b>	Grey	L:1230mm W:660mm H:845mm

## SEATED PREACHER CURL BENCH



## PREMIUM HEAVY-DUTY SQUAT STAND



Built to build those biceps, this quality steel preacher curl bench provides variation to any curling routine.

- The perfect bench for isolating the brachialis (lower bicep) which aids the flexion of your elbow
- Wide arm pads and adjustable seat height combine for a solid base to execute your bicep curls
- Aesthetic laser-cut chrome bar catches
- Robust, heavy-grade flat oval steel frame
- Perform a huge breadth of strength-building exercises with curl bars or dumbbells using whatever grip you choose, be it pronated, supinated or semi-supinated
- One-year warranty on frame, 90 days warranty on upholstery

### COLOUR OPTIONS

<b>JL-SPCB-BLK</b>	Black	L:1080mm W:840mm H:930mm
<b>JL-SPCB-GRY</b>	Grey	L:1080mm W:840mm H:930mm



Space-saving, solid squat stand that can be used on its own, with a weights bench or with a weightlifting platform.

- Suitable for beginners through to advanced bodybuilders this highly versatile system adjusts vertically and horizontally thanks to a simple screw system
- Featuring EU and UK Registered Design, it's constructed from oval steel tubing and coated in a durable graphite grey or matte black finish
- Can be used with a full-length 7ft Olympic bar for full, leg-building squats
- Can also be used with benches or platforms for a comprehensive range of strength-building exercises
- Height of main squat hooks: maximum 1,598mm, minimum 950mm.
- One-year warranty

### COLOUR OPTIONS

<b>JTHDSS BLK</b>	Black	W:1280mm D:1450mm H:429-728mm
<b>JTHDSS GRY</b>	Grey	W:1280mm D:1450mm H:429-728mm

## I-SERIES ADJUSTABLE INCLINE/DECLINE BENCH



Great value bench that'll comfortably support a huge range of upper-body strength exercises.

- Ten angles of adjustment from  $-10^{\circ}$  to  $85^{\circ}$  for a variety of upper-body exercises including chest press, seated shoulder press and seated curls
- Can be used with dumbbells, barbells, cables, curl bars or tricep bars.
- Added stability thanks to anti-slip rubber feet
- Quality upholstery available in red, blue or black
- One-year warranty on frame, 90 days warranty on upholstery

### COLOUR OPTIONS

<b>JT-9953 BLK</b>	Black	L:1520mm D:695mm H:460mm
<b>JT-9953 GRY</b>	Grey	L:1520mm D:695mm H:460mm



**CUSTOM BENCH WRAPS  
CALL FOR A QUOTE**



**JL-DAP-GRY  
DUAL ADJUSTABLE  
PULLEY**



## DUAL ADJUSTABLE PULLEY



Versatile, compact machine with advanced bio-mechanics, targeting a broad range of muscles to build strength and power.

- Capable of delivering a staggering amount of upper-body and lower-torso exercises including chest flies, lat pulldowns, tricep extensions...
- Particularly useful for functional and explosive strength, so ideal for CrossFit athletes and sports men & women
- Multi-grip chinning bar included for back work
- Efficient rolling mechanism provides a smooth and simple adjustment with 2 X 100kg stack
- Includes placards featuring a range of exercises for targeting specific muscles, perfect for any commercial gym setting
- Lifetime warranty on frame, 12 months warranty on cables

### COLOUR OPTIONS

<b>JL-DAP-BLK</b>	Black	303kg	L:1210mm W:1560mm H:2200mm
<b>JL-DAP-GRY</b>	Grey	303kg	L:1210mm W:1560mm H:2200mm



## CABLE ATTACHMENT RACK

Sturdy steel storage solution for 15 Dual Adjustable Pulley cable attachments to enable full body workouts.

- Heavy tubular one-piece construction, built for stability
- Holds up to 15 attachments
- Vertical space saving design
- Chrome attachment pins
- Height:1100mm, Depth:500mm (Weight: 25KG)
- One-year warranty

### PRODUCT INFORMATION

**JTMR-01 BLK** Cable attachment rack (unfilled)

**JTMR-01 GRY** Cable attachment rack (unfilled)

## URETHANE CABLE ATTACHMENTS

Work out every muscle with our durable cable attachments. Easy to use and attach safely, these attachments are made from a combination of strong steel, urethane and rope for maximum effect. One-year warranty on attachments.

### PRODUCT INFORMATION

<b>JTMB-16</b>	1	Soft cable handle
<b>JTMBU-01</b>	2	Cable handle with urethane grip
<b>JTMBU-02</b>	3	V handle
<b>JTMBU-03</b>	4	Angled pressdown bar
<b>JTMBU-04</b>	5	Straight cable bar
<b>JTMBU-05</b>	6	Tricep rope (black)
<b>JTMBU-06</b>	7	Pivoting pressdown bar
<b>JTMBU-07</b>	8	Cable EZ curl bar
<b>JTMBU-08</b>	9	Cable curl bar
<b>JTMBU-09</b>	10	Parallel grip lat wide pulldown bar
<b>JTMBU-10</b>	11	Parallel grip lat narrow pulldown bar
<b>JTMBU-11</b>	12	Close grip low row/pulldown handle
<b>JTMBU-12</b>	13	Single tricep rope
<b>JTRHMAU-04</b>	14	36" Standard lat pulldown bar
<b>JTRHMAU-03</b>	15	48" Standard lat pulldown bar
<b>JLAS</b>	16	2 x Leather Ankle Straps
<b>JTMR-15A</b>	2-15	Set of 15 attachments (2 x cable handles)



**JTMR-01 GRY**  
**CABLE ATTACHMENT RACK**



1



2



3



4



5



6



7



8



9



10



11



12



13



14



15



16





## PG 92 FUNCTIONAL TRAINING

- PG 94 Kettlebells
- PG 97 Kettlebell Racks
- PG 98 Plyometrics
- PG 101 TufNut
- PG 102 Sandbags
- PG 105 Flex-Bags
- PG 106 Sandbag Racks
- PG 106 Wall Balls
- PG 107 Slam Balls
- PG 108 Medicine & Grip Balls
- PG 109 Ball Racks

# FUNCTIONAL

- PG 111 Sleds
- PG 112 Digital Timer
- PG 112 Tank
- PG 113 Training Rope
- PG 114 Powerbands & Aerobic Bands
- PG 115 Resistance Tubes & Gym Hammer
- PG 116 ALPHA^CHAMP
- PG 116 Teqball
- PG 117 THERAGUN
- PG 119 Chinning Bar & Weighted Vest
- PG 120 Flowin
- PG 121 Gym Rings
- PG 122 Lifeline USA



# KETTLEBELLS & RACKS

## CHROME/RUBBER KETTLEBELLS



Great-value kettlebells that'll strengthen your entire body. Made to the highest quality and featuring a super-smooth handle.

- The finest JR3 rubber not only provides the weight but doesn't mark or scuff your gym floor. Also perfectly balanced so stands alone
- Smooth chrome handle is great to grip and looks fresh
- Kettlebell benefits are numerous including boosting functional strength, increasing cardiovascular fitness and, importantly, they're fun to use
- Featuring EU and UK Registered Design, with a gravity cast iron core
- Available from 4kg to 20kg in 2kg increments, plus 24kg
- One-year warranty

### INDIVIDUAL KETTLEBELLS

<b>JTKBRC3-04</b>	4kg	<b>JTKBRC3-14</b>	14kg
<b>JTKBRC3-06</b>	6kg	<b>JTKBRC3-16</b>	16kg
<b>JTKBRC3-08</b>	8kg	<b>JTKBRC3-18</b>	18kg
<b>JTKBRC3-10</b>	10kg	<b>JTKBRC3-20</b>	20kg
<b>JTKBRC3-12</b>	12kg	<b>JTKBRC3-24</b>	24kg

### KETTLEBELL SET

<b>JTKBRC3-P5</b>	10 Kettlebell Set (4-24kg)
-------------------	----------------------------

## CAST IRON KETTLEBELLS



Featuring an EU and UK Registered Design, and BSI Approved, this quality cast-iron kettlebell works your whole body and all for a great price.

- This re-engineered masterpiece is a one-piece design that's constructed from cast iron and finished off with a matte coating that both withstands knocks and looks good
- Rigorous research and development resulted in the perfect handle sizes and weight distribution
- Kettlebell benefits are numerous including boosting functional strength, increasing cardiovascular fitness and, importantly, they're fun to use
- Available from 4kg to 40kg, plus five sets from beginners through to advanced
- One-year warranty

### INDIVIDUAL KETTLEBELLS

<b>JTKBC3-4</b>	4kg	<b>JTKBC3-20</b>	20kg
<b>JTKBC3-6</b>	6kg	<b>JTKBC3-24</b>	24kg
<b>JTKBC3-8</b>	8kg	<b>JTKBC3-28</b>	28kg
<b>JTKBC3-12</b>	12kg	<b>JTKBC3-32</b>	32kg
<b>JTKBC3-16</b>	16kg	<b>JTKBC3-40</b>	40kg

### KETTLEBELL SETS

<b>JTKBC3-P1</b>	Women's beginner (1x4kg, 1x8kg, 1x12kg)
<b>JTKBC3-P2</b>	Beginner (1x12kg, 1x16kg, 1x20kg)
<b>JTKBC3-P3</b>	Intermediate (1x20kg, 1x24kg, 1x28kg)
<b>JTKBC3-P4</b>	Advanced (1x28kg, 1x32kg, 1x40kg)
<b>JTKBC3-P5</b>	10 Kettlebell Set (4-40kg)

## COMPETITION KETTLEBELLS



Super-smooth and colour-coded kettlebells designed for Competition use.

- High-quality hollow steel construction beautifully finished with a smooth outer and super-smooth, comfortable handle (35mm)
- Standard competition colours for easy weight identification.
- Available from 8kg to 40kg in 4kg increments
- Large, flat stable base for maximum results from floor-based exercises
- Manufactured to meet competition standards for handle diameter (35mm) and bell dimensions
- One-year warranty

### INDIVIDUAL KETTLEBELLS

<b>JLCKB2-08</b>	8kg	Pink	<b>JLCKB2-14</b>	28kg	Orange
<b>JLCKB2-12</b>	12kg	Blue	<b>JLCKB2-16</b>	32kg	Red
<b>JLCKB2-16</b>	16kg	Yellow	<b>JLCKB2-18</b>	36kg	Grey
<b>JLCKB2-20</b>	20kg	Purple	<b>JLCKB2-20</b>	40kg	White
<b>JLCKB2-24</b>	24kg	Green			

### KETTLEBELL SETS

<b>JLCKB2-P1</b>	9 Kettlebell Set (8-40kg)
------------------	---------------------------

## NEOPRENE COVERED KETTLEBELLS



Fantastic value kettlebell to add colour and vibrancy to your class workouts.

- Super strong cast-iron bell and handle with slick neoprene covering to protect both the bell and the floor from damage
- The handle is the optimum distance from the bell to ensure comfort and safety.
- Designed to sit on the forearm and not the wrist during strength-building exercises
- Colour coded for easy identification.
- Available from 4kg to 40kg in 4kg increments, plus five sets from beginners through to advanced
- One-year warranty

### INDIVIDUAL KETTLEBELLS

<b>JTKBCN2-04</b>	4kg	Pink	<b>JTKBCN2-14</b>	20kg	Teal
<b>JTKBCN2-06</b>	6kg	Teal	<b>JTKBCN2-16</b>	24kg	Orange
<b>JTKBCN2-08</b>	8kg	Orange	<b>JTKBCN2-18</b>	28kg	Purple
<b>JTKBCN2-10</b>	12kg	Purple	<b>JTKBCN2-20</b>	32kg	Red
<b>JTKBCN2-12</b>	16kg	Red	<b>JTKBCN2-24</b>	40kg	Black

### KETTLEBELL SETS

<b>JTKBCN2-NP1</b>	Women's beginner (1x4kg, 1x8kg, 1x12kg)
<b>JTKBCN2-NP2</b>	Beginner (1x12kg, 1x16kg, 1x20kg)
<b>JTKBCN2-NP3</b>	Intermediate (1x20kg, 1x24kg, 1x28kg)
<b>JTKBCN2-NP4</b>	Advanced (1x28kg, 1x32kg, 1x40kg)
<b>JTKBCN2-NP5</b>	10 Kettlebell Set (4-40kg)



## UK KETTLEBELL RACKS



Made in the UK, this new Kettlebell rack features a slimline design, with storage for up to 12 Kettlebells.

- British design and manufactured by our Jordan Fabrications team, this stylish new rack holds a full set of Kettlebells
- Rubber mats on shelves reduce noise and protect kettlebells
- Made from CE marked, quality steel
- Available in two standard colours, Graphite Grey or Matte Black
- Powder coating available to match your own brand colour
- One-year warranty

### PRODUCT INFORMATION

**JTKBRUK-GRY** 2-tier grey • H:782mm L:1395mm D:600mm

**JTKBRUK-BLK** 2-tier black • H:782mm L:1395mm D:600mm

## KETTLEBELL WRIST GUARDS

Great-value and comfortable set of wrist guards that address the technical and comfort issues sometimes associated with kettlebell training.

### PRODUCT INFORMATION

**JLWRIST** Kettlebell wrist guards

## KETTLEBELL RACKS



Stylish and contemporary steel kettlebell racks.

- Solid steel shelves can store up to 10 (2 Tier) or 15 (3 Tier) kettlebells
- Rubber mats on shelves protect kettlebells while reduce clanking of kettlebells
- Maximises space wherever it's used, from a chain of gyms to your home gym
- Available in two standard colours, Graphite Grey or Matte Black
- Powder coating available to match your own brand colour
- One-year warranty

### PRODUCT INFORMATION

**JTKBR GRY** 2-tier rack H:840mm L:1220mm D:530mm

**JTKBR BLK** 2-tier rack H:840mm L:1220mm D:530mm

**JTKBR-03 GRY** 3-tier rack H:1180mm L:1560mm D:600mm

**JTKBR-03 BLK** 3-tier rack H:1180mm L:1560mm D:600mm



# PLYOMETRICS

JORDAN®

↑ 50CM

## SOFT PLYOMETRIC BOXES



Designed for use by athletes, gym goers and children alike, these soft plyos build strength, balance and power, sitting neatly in the corner of any sports club or gym.

- High density foam blocks with non slip vinyl covers provide a soft surface that reduces stress on joints during landing
- Unique stackable design (EU and UK Registered Design) minimizes space required whilst velcro holds boxes firmly, and safely, in place
- Light and easier to move around than ever before
- Available individually or as part of a full set of five
- One-year warranty

### PRODUCT INFORMATION

<b>JLSPB2-03</b>	3" Yellow	H:76mm L:820mm W:820mm
<b>JLSPB2-06</b>	6" Teal	H:152mm L:820mm W:820mm
<b>JLSPB2-12</b>	12" Orange	H:304mm, L:820mm W:820mm
<b>JLSPB2-18</b>	18" Purple	H:457mm L:820mm W:820mm
<b>JLSPB2-24</b>	24" Red	H:609mm L:820mm W:820mm
<b>JLSPB2-5</b>	Set of 5	H1598mm L:820mm W:820mm

## 3-IN-1 PLYOBLOC



An EU and UK Registered Design, this space-saving Plyobloc features three different heights within one plyo box, suitable for all ages and abilities.

- Three heights – 50cm (20in), 60cm (24in) and 75cm (29in) – to not only provide a powerful workout platform whatever your ability, this plyometric jump box is also perfectly sized for competition e.g. CrossFit games.
- High-density foam reduces impact on landing and so reduces the chances of injury
- Durable vinyl covering prevents slippage and adds stability
- Space-saving design is the perfect entry point for beginners to plyometric train
- From box jumps to rapid fire step ups, it's perfect for bodyweight-only based workouts
- One-year warranty on frame, 90 days warranty on cover

### PRODUCT INFORMATION

<b>JLPLYOBLOCK2</b>	3-in-1	H:510mm L:610m, W:760mm
---------------------	--------	-------------------------

# PERFORMANCE



## TUFNUT



Featuring all the benefits of tyre training, the TufNut, unique to Jordan, adds more dimensions to your workout than ever before.

- An EU and UK Registered Design, this sturdy, steel hexagonal frame is surrounded in super-resilient, recycled foam and encased in a strong, external cover to absorb everything you dish out
- Straps on different faces to ensure you can push, pull, flip, roll and jump to maximise strength, power and cardiovascular adaptation
- Perfect for deadlifts and the Farmer's walk as part of a killer circuit
- Easy to store with no need to worry about it rolling off/over
- Four weights available: 40kg, 60kg, 80kg and 100kg
- One-year warranty on frame, 90 days warranty on straps/clips/cover

### PRODUCT INFORMATION

<b>JLTFNT2-40</b>	Teal	40kg
<b>JLTFNT2-60</b>	Orange	60kg
<b>JLTFNT2-80</b>	Purple	80kg
<b>JLTFNT2-100</b>	Red	100kg

## SANDBAG PRO



Stylish and sturdy, and perfect for strength exercises, our Sandbag Pros build more functional strength than ever before.

- Versatile Sandbag offering a full-body workout, ideal for conditioning and building stamina, its a great tool for the gym floor as well as CrossFit, MMA, boxing gyms and boot camps
- Featuring an EU and UK Registered Design, it's both functional and durable, with a superior construction compared to similar styled bags
- Extra handles not only give you more training options, it also means you can work with a training partner for extra motivation
- Comes in eight weights from 5kg to 35kg, each colour coded for easy identification
- One-year warranty

### PRODUCT INFORMATION

<b>JLSB-PRON2-5</b>	5kg	Pink	<b>JLSB-PRON2-20</b>	20kg	Orange
<b>JLSB-PRON2-7.5</b>	7.5kg	Blue	<b>JLSB-PRON2-25</b>	25kg	Purple
<b>JLSB-PRON2-10</b>	10kg	Yellow	<b>JLSB-PRON2-30</b>	30kg	Red
<b>JLSB-PRON2-15</b>	15kg	Teal	<b>JLSB-PRON2-35</b>	35kg	Green



## SANDBAG EXTREME



If you want a sandbag you can slam, you need to go extreme. This durable sandbag is ideal for boot camps and outdoor training.

- Impressive sandbag that's perfect for anyone looking to boost functional strength including CrossFit, MMA, boxing and boot camps. Also great as a rehab tool
- The most hard-wearing sandbag on the market, thanks to bar-tacked reinforced stress points and durable handle, it also features triple-set handles to increase versatility
- Available unfilled (for delivery worldwide) or filled in a range of weights
- Featuring an EU and UK Registered Design, it's easy to fill thanks to a wide-mouth, double-closure opening with inner bag to prevent leaking
- One-year warranty

### PRODUCT INFORMATION

<b>JL-SXT2-5</b>	5kg	Blue	<b>JL-SXT2-25</b>	25kg	Purple
<b>JL-SXT2-10</b>	10kg	Yellow	<b>JL-SXT2-30</b>	30kg	Red
<b>JL-SXT2-15</b>	15kg	Teal	<b>JL-SXT2-35</b>	35kg	Green
<b>JL-SXT2-20</b>	20kg	Orange			

## SANDBAG RACK



Fed up with your sandbags cluttering up your gym floor? This stylish rack provides the affordable solution.

- Solid, stable and sleek rack that holds up to five sandbags (Pro/Extreme) to save space
- Powder coat finish cranks up durability, ensuring it's much more resistant to everyday wear and tear
- Made from flat oval steel
- Great for commercial gyms and sports clubs
- Choose to colour your rack to match your brand colours using our powder coating service
- One-year warranty

### PRODUCT INFORMATION

<b>JTPBR-05 GRY</b>	H:1420mm L:580mm D:680mm
<b>JTPBR-05 BLK</b>	H:1420mm L:580mm D:680mm

# EXTREME WORKOUTS BUILT BY JORDAN

JL-SXT2-20  
20KG SANDBAG  
EXTREME

JORDAN®



## SANDBALL EXTREME



This 3 in 1 Sandbag, Kettlebell and Slam ball is the perfect portable workout solution for Personal Trainers and boot camp instructors alike.

- Superb, compact sandball that's perfect for anyone looking to boost functional strength
- Featuring an EU and UK Registered Design, with two comfortable handles to increase exercise variations, it is very hard-wearing, thanks to the bar-tacked reinforced stress points and durable handle
- Unfilled when shipped internationally which also makes it ideal for positioning for international trips where you can fill the bag with sand for holiday fitness regimes
- Easy to fill thanks to wide-mouth, double-closure opening with inner bag to prevent leaking
- One-year warranty

### PRODUCT INFORMATION

<b>JL-SBXT2-04</b>	4kg	Blue
<b>JL-SBXT2-06</b>	6kg	Yellow
<b>JL-SBXT2-08</b>	8kg	Teal
<b>JL-SBXT2-10</b>	10kg	Orange
<b>JL-SBXT2-12</b>	12kg	Purple

## FLEX-BAG



Boost functional strength and power with this highly portable Bulgarian style training tool.

- Lift it, swing it, curl it... this is the ultimate functional training tool that builds strength and power
- Whatever exercise you perform, you'll boost strength and endurance capabilities of your grip. Also superb for co-ordination, balance and rehabilitation work
- Portability makes it perfect for all but especially personal trainers, boot camps and small-group training
- Available in five weights: 5kg, 7.5kg, 10kg, 15kg and 20kg
- One-year warranty

### PRODUCT INFORMATION

<b>JLFLEX-05</b>	5kg	Yellow
<b>JLFLEX-7.5</b>	7.5kg	Teal
<b>JLFLEX-10</b>	10kg	Orange
<b>JLFLEX-15</b>	15kg	Purple
<b>JLFLEX-20</b>	20kg	Red

## WALL BALL



Built to build explosiveness, strength and cardio endurance, our wall balls are a must for any functional workout.

- The staple of every gym and exercise routine, muscles worked are only limited by your imagination
- Stylish, matte outer layer for durability, makes these wall balls easier to handle/catch than ever before
- Hand-sewn, leather-like medicine ball whose inner load is protected by high-density foam
- Great for developing a range of muscles including quads, glutes, calves, abs, deltoid, biceps, and triceps
- Available in six weights, all colour coded for easy weight identification
- One-year warranty

### PRODUCT INFORMATION

<b>JLOMB2-04</b>	4kg	Yellow
<b>JLOMB2-06</b>	6kg	Teal
<b>JLOMB2-08</b>	8kg	Orange
<b>JLOMB2-10</b>	10kg	Purple
<b>JLOMB2-12</b>	12kg	Red
<b>JLOMB2-14</b>	14kg	Green

## WALL BALL RACK



Keep floor space tidy with this impressive and affordable oversized medicine ball rack.

- Prevent mess and accidents with this stylish and stable rack that holds up to four wall balls
- Constructed from strong and hard-wearing oval steel with a powder-coat finish
- Great for commercial gyms and sports clubs
- Choose to custom colour your rack to match your brand colours and enhance your space
- Available in Graphite Grey or Matte Black
- One-year warranty

### PRODUCT INFORMATION

<b>JTOMBS-01 GRY</b>	H:1420mm, L:580mm, D:680mm
<b>JTOMBS-01 BLK</b>	H:1420mm, L:580mm, D:680mm



## SLAM BALL



Great-value slam ball whose versatility is key. Having evolved from the medicine ball, this tough rubber slam ball is specifically designed for throwing and slamming exercises.

- Ultra-durable design comprises a thick, strong outer layer to withstand thousands of slams
- Great for circuit training, functional strength, boosting explosive power and improving co-ordination
- The easy grip technology on the outside of the ball makes it ideal for fast reps as part of a functional workout
- Easily to store, it's great for home use as can burn serious calories in a short workout
- Available in six weights – 3kg, 5kg, 7kg, 9kg, 12kg and 15kg
- One-year warranty

### PRODUCT INFORMATION

<b>JLSB2-03</b>	3kg	Red
<b>JLSB2-05</b>	5kg	Red
<b>JLSB2-07</b>	7kg	Red
<b>JLSB2-09</b>	9kg	Red
<b>JLSB2-12</b>	12kg	Red
<b>JLSB2-15</b>	15kg	Red

### RACKS AVAILABLE ON PG 109

## MEDICINE BALL



A gym essential, this classic medicine ball is the perfect tool to develop strength and power, enhancing any workout.

- The perfect medicine ball for individual use or in a class like circuits or functional training
- Premium-quality textured rubber surface similar to that of a basketball, ensuring unrivalled levels of grip
- The rubber-weighted centre ensures excellent balance
- Ten colour codes for easy identification
- Used for a range of explosive power and strength exercises including a Rock and Roll Up, lunges, squat press and throw, reverse swing & reaching Romanian deadlifts
- One-year warranty

### PRODUCT INFORMATION

<b>JTMEDH2-01</b>	1kg	Black/Pink
<b>JTMEDH2-02</b>	2kg	Black/Blue
<b>JTMEDH2-03</b>	3kg	Black/Yellow
<b>JTMEDH2-04</b>	4kg	Black/Teal
<b>JTMEDH2-05</b>	5kg	Black/Orange
<b>JTMEDH2-06</b>	6kg	Black/Purple
<b>JTMEDH2-07</b>	7kg	Black/Red
<b>JTMEDH2-08</b>	8kg	Black/Green
<b>JTMEDH2-09</b>	9kg	Black/Amber
<b>JTMEDH2-10</b>	10kg	Black/Grey

## GRIP BALL



This double handle grip medicine ball offers all the benefits of a medicine ball with added workout functionality.

- Double-Grip ball gives you all the strength benefits of a traditional ball but two grips afford control and ability to cope with heavier weights
- Great for core training and for rehabilitation work
- The rubber-weighted centre ensures excellent balance
- Can be used to mirror many kettlebell exercises, opening up a whole new set of one-handed movements
- Six colour codes for easy identification
- One-year warranty

### PRODUCT INFORMATION

<b>JTMEDDG2-5</b>	5kg	Black/Blue
<b>JTMEDDG2-6</b>	6kg	Black/Yellow
<b>JTMEDDG2-7</b>	7kg	Black/Teal
<b>JTMEDDG2-8</b>	8kg	Black/Orange
<b>JTMEDDG2-9</b>	9kg	Black/Purple
<b>JTMEDDG2-10</b>	10kg	Black/Red

## LARGE MEDICINE BALL RACK



Affordable rack that stores up to 20 medicine balls or slam balls.

- Great-value and well-constructed medicine ball rack holds up to 20 medicine/slam balls in slick horizontal fashion
- Portable thanks to solidly made set of wheels, which are also lockable
- Made from solid steel to ensure longevity. Weighs 35kg
- Available in Graphite Grey or Matte Black as standard, with other colour options available
- Medicine balls available separately
- One-year warranty

### PRODUCT INFORMATION

<b>JTMB-20 GRY</b>	Holds up to 20 balls	L:1510mm D:640mm H:1020mm
<b>JTMB-20 BLK</b>	Holds up to 20 balls	L:1510mm D:640mm H:1020mm

## 5 & 10 MEDICINE BALL & SLAM BALL RACK



Affordable racks that stores up to 10 or 5 medicine balls or slam balls.

- Great-value medicine ball rack holds up to 10 medicine/slam balls in a vertical direction
- Durable and hard-wearing rack that's suitable for most spaces either home or in a commercial gym
- Made from solid steel to ensure longevity
- Available in Graphite Grey or Matte Black as standard, with other colour options available
- Medicine balls available separately
- One-year warranty

### PRODUCT INFORMATION

<b>JTMB-05 GRY</b>	Holds 5 balls	H:1420mm L:280mm D:360mm
<b>JTMB-05 BLK</b>	Holds 5 balls	H:1420mm L:280mm D:360mm
<b>JTMB-10 GRY</b>	Holds 10 balls	H:1600mm L:580mm D:680mm
<b>JTMB-10 BLK</b>	Holds 10 balls	H:1600mm L:580mm D:680mm

**JLFRCTP-10  
HG COLOUR RUBBER  
BUMPER PLATE  
10KG**

**JTPS GRY  
PERFORMANCE  
SLED**

## PROWLER SLED



A CrossFit essential, the perfect sled for working on a huge range of fitness parameters including strength, stamina, power and many more.

- Incredibly versatile training tool that's easy to use and builds strength and stamina, engaging all-over muscles from quads to core to upper body
- Made in the UK from solid-steel with quality powder-coated finish, this sled carries a main frame life time guarantee
- Ideal for indoor turf surfaces as well as outdoors
- Multi grip points with durable rubber handles, alongside a battle rope attachment, means it can be pushed or pulled by attaching the Jordan training rope or by using a harness
- Holds weight plates/discs of up to 140kg. Sled weight: 33kg
- One-year warranty

### PRODUCT INFORMATION

<b>JL-2715-BLK</b>	Black	L:1136mm D:702mm H:831mm
<b>JL-2715-GRY</b>	Grey	L:1136mm D:702mm H:831mm

### SLED HARNESS

This ultra-durable sled harness, with its one fits all design, has everything you need to pull your sled safely and securely.

- Reinforced at critical stress points, this new and improved harness now features steel carabiners for longevity
- Padded shoulder straps for ultimate comfort

### PRODUCT INFORMATION

<b>JTPSH</b>	Black	Sled Harness
--------------	-------	--------------

## PERFORMANCE SLED



Build explosive strength with this durable and smooth-running performance sled.

- Impressive gym sled that boosts strength in the glutes, calves, hamstrings, quads and core
- Constructed from a solid-steel frame that will last for years. Multi-point harness to maximise comfort for any user
- Harness purchased separately
- With a push/pull design, you can use for forward/backwards movements to enhance your workout
- Plate section features black fleck rubber and can hold loads up to 140kg. Sled weight: 24kg without Olympic training plates
- One-year warranty

### PRODUCT INFORMATION

<b>JTPS GRY</b>	Grey	L:1100mm W:460mm H:340mm
<b>JTPS BLK</b>	Black	L:1100mm W:460mm H:340mm



## 6 DIGIT DIGITAL INTERVAL TIMER



Easy-to-view timer that's perfect for class or personal interval-based training sessions and classes.

- Clear and easy-to-view digital interval wall timer that's perfect for both commercial gyms and home gyms.
- Aluminium casing adds durability and style
- Includes a large remote control with a higher-density, more visible LED and clear audio
- Features include stopwatch, rest-period timer, training time in seconds plus the capacity to save times and data
- Comes with 9-volt adaptor and is single voltage at 220 to 240 volts
- One-year warranty

### PRODUCT INFORMATION

<b>JT-DTC06</b>	EU plug	L:790mm D:90mm H:210mm
<b>JT-DTC06UK</b>	UK plug	L:790mm D:90mm H:210mm

## TORQUE TANK™



The new TANK™ M4 is the evolution of the Torque Tank surface sled. TANK™, designed to give athletes & gym goers a complete workout.

- Bi-directional so resistance is supplied in both directions eliminating the need to turn the TANK around
- Grip points feature a firm rubber coating which allows the user to get a tight hold
- Select from three levels of resistance and perform bursts of acceleration and speed, varying the intensity in different runs or within the same run
- Inflated soft wheels are gentle on carpeting, hardwood, and natural turf grass
- Resistance that feels dangerous can be backed down instantly during the run to a level that feels safer
- 10-years warranty on frame, moving parts 2 years, tyres 90 days

### PRODUCT INFORMATION

<b>JL-XTT1</b>	Tank - All Surface Sled
<b>JL-XTT1GT</b>	Tank - Group Training Package



## TRAINING ROPES



Highly versatile training tool that's perfect for all abilities, from first-time gym-goers to experienced sports professionals

- A durable and high-quality natural Manilla rope covered with a water-resistant nylon jacket
- Stand hip-width apart, adopt a gentle squat, grasp the ends of the rope and away you go – total body fitness
- The great thing is you work many muscles simultaneously so a great time-saving training tool, plus boosts anaerobic and aerobic capacity
- Number of muscles worked by battle ropes is huge but includes forearms, shoulders, back and legs
- Suitable for indoor and outdoor use
- One-year warranty

### PRODUCT INFORMATION

<b>JLTR-01</b>	38mm diameter, 15m Black Training Rope
<b>JLTR-02</b>	50mm diameter, 15m Black Training Rope
<b>JLTR-05</b>	38mm diameter, Approx 10m Black Training Rope



### ROPE/SUSPENSION TRAINER WALL/FLOOR ANCHOR

Safe and secure anchor point for training ropes and suspension trainers, including Jungle Gym, to be looped through.

- Can also be used with resistance bands and resistance tubes
- Wall Fittings not included
- One-year warranty

### PRODUCT INFORMATION

<b>JLRA2 GRY</b>	Grey Rope Anchor	L:286mm W:89mm H:89mm
<b>JLRA2 BLK</b>	Black Rope Anchor	L:286mm W:89mm H:89mm



### TRAINING ROPE STORAGE POINT

Compact and stable wall-mounted storage for your battle ropes.

- Oval flat steel composition with a powder coated finish
- Choose a colour that suits your gym
- One-year warranty

### PRODUCT INFORMATION

<b>JLRSP GRY</b>	Grey	D:355mm H:245mm W:64mm
<b>JLRSP BLK</b>	Black	D:355mm H:245mm W:64mm
<b>JLRASK</b>	Black	Rope anchor strap kit

## POWERBANDS



Used frequently in Powerlifting and in resistance training, these sturdy bands are great for body weight training and enable a progressive load to be added safely to barbell ends.

- Durable, seamless latex rubber ensures you'll never risk snapping when loaded correctly.
- Width variation to ensure appropriate resistance (the wider the band the better the resistance)
- Ideal anchor attachment for squats, deadlifts and bench presses (perfect for use with our Squat Rack)
- Can be used with Olympic, Hex and EZ Bars
- Widely used in pull-up, chin-up and dip variations
- One-year warranty

### PRODUCT INFORMATION

<b>JLPOWB-01</b>	Red	13mm Thick
<b>JLPOWB-02</b>	Black	22mm Thick
<b>JLPOWB-03</b>	Purple	32mm Thick
<b>JLPOWB-04</b>	Green	44mm Thick
<b>JLPOWB-05</b>	Blue	64mm Thick
<b>JLPOWB-06</b>	Orange	83mm Thick

## AEROBIC BANDS



A fantastic set of aerobic/resistance bands for both training and rehabilitation exercises, these colourful bands feature varying resistance to build muscle strength.

- Set of four colour-coded strength bands for strength & conditioning work or when returning from an injury
- Yellow = light resistance; Green = medium; Blue = heavy; Red = Extra strong
- Particularly beneficial for treatment and prevention of hamstring and thigh-muscle injuries
- Activate your abs, glutes, hamstrings, quads and calves – these are the perfect bands for a full lower body routine.
- Constructed from latex so durable whilst being super stretchy
- One-year warranty

### PRODUCT INFORMATION

<b>JL-ABS</b>	Set of 4	250mm x 50mm (500mm loop)
---------------	----------	---------------------------

## RESISTANCE TUBES



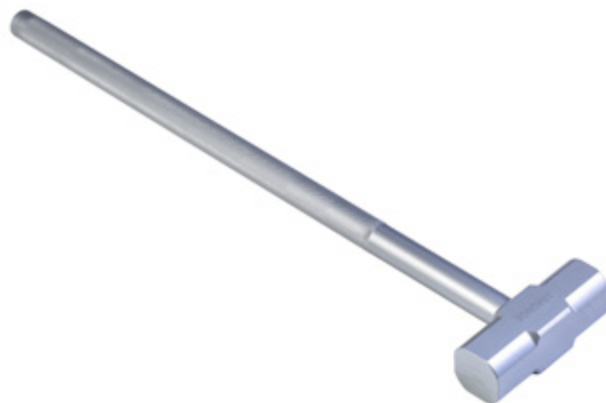
Robust set of resistance tubes, that are perfect for a massive variety of exercises as part of a studio workout as well as in the home.

- Durable resistance bands whose ends feature extremely comfortable anti-pick foam handles
- Perfect for a range of exercises: work your shoulders with side lateral raises; fire up your quadriceps via lunges; and hook over a high immovable object and work those triceps
- A slim 60cm sleeve extends the life of your tube
- Arguably the most portable item of equipment that should be in every gym/travel bag
- Available in four sizes and resistances: level one (pink), level two (yellow), level three (pale blue) and level four (red)
- One-year warranty

### PRODUCT INFORMATION

<b>JTRT01</b>	Pink	Resistance Tube Level 1
<b>JTRT02</b>	Yellow	Resistance Tube Level 2
<b>JTRT03</b>	Light Blue	Resistance Tube Level 3
<b>JTRT04</b>	Red	Resistance Tube Level 4

## GYM HAMMER



The ultimate all-over gym workout that's perfect for all gym users from beginners through to advanced CrossFit athletes.

- A fantastic training tool for an all-over body workout that boosts strength, endurance and co-ordination.
- Typical training exercises include hammer smash, tricep blaster and 'The Fireman'
- Great for boot camps and outdoor personal-training sessions, where the use of a tyre is available
- Machined steel hammer head with sand-blasted steel-bar handle offering optimal grip to prevent slippage
- Available in three weights to increase workout potential every use
- One-year warranty

### PRODUCT INFORMATION

<b>JLGH-04</b>	4kg	L:570mm
<b>JLGH-08</b>	8kg	L:750mm
<b>JLGH-10</b>	10kg	L:750mm

## ALPHA^CHAMP



The ALPHA^CHAMP Triple Rebounder is a functional training tool combining the benefits of trampoline training and lateral movements in one training device.

- Lateral Rebound Training is an innovative and very effective approach to achieve demanding performance in training. The unique product design opens up a multitude of functional movements.
- Includes 3 inclined, symmetrical arranged, hexagon shaped trampolines
- Made from a stainless steel frame, this compact, high quality product is easy to use and mobile
- Transport wheels for easy handling and storage
- The side jumping surfaces have a double folding mechanism and can be easily unlocked and folded up towards each other to save space. When folded up, the trampoline only needs space of approx. 1.0 sqm.

### PRODUCT INFORMATION

<b>JL-ALC-LRT</b>	Lateral Rebound trainer	L:2400mm, W:1150mm, H:1350mm Weighs: 40kg
-------------------	-------------------------	--

## TEQBALL



Taking the footballing world by storm, this Teqball table is a must for anyone looking for a fun and exciting addition to their home or communal facility e.g. hotels and student accommodation.

- Waterproof and UV resistant, this sturdy table can be used outdoors as well as indoors
- Foldable options have large lockable wheels, which make this a fantastic mobile table and can also be used to create a rebound wall to play and practice against.
- Fixed options can be secured to the ground, ideal for dedicated outdoor spaces
- In addition to Teqball, you can also play Teqis, Teqpong, Qatch, and Teqvoly on this table.
- Easy to assemble, fold and store (a hassle free installation can also be arranged)

### PRODUCT INFORMATION

<b>JL-TEQ-L</b>	1	Lite	111kg	Foldable
<b>JL-TEQ-O</b>	2	One table	145kg	Fixed
<b>JL-TEQ-S</b>	3	Smart table	156kg	Foldable

## THERABODY - THERAGUN RANGE



Massage guns work by increasing blood flow to a specific muscle area, which then helps reduce inflammation and muscle tension, breaking up those pesky knots that linger after a hard workout.

- Proprietary brushless motor with QuietForce Technology™ delivers renowned Theragun power, while being quieter than ever.
- The Therabody app connects seamlessly via Bluetooth to deliver customized wellness routines pulled from your activity data.
- Use the Therabody App to guide you through each wellness routine
- 16mm Amplitude that reaches 60% deeper into the muscle, more than any consumer-grade vibration massager
- Available in a sleek Black or stylish White

### PRODUCT INFORMATION

<b>JL-TGE-BLK</b>	Elite Black	1-Year warranty
<b>JL-TGE-WT</b>	Elite White	1-Year warranty
<b>JL-TGMINI</b>	Mini	1-Year warranty
<b>JL-TGMINI-WT</b>	Mini-white	1-Year warranty
<b>JL-TGPRI</b>	Prime	1-Year warranty
<b>JL-TGPRO</b>	Pro	Industry-leading 2-year warranty



## THERABODY - THERAGUN GYM CART



**CALL US FOR  
MORE INFORMATION**



# BODYWEIGHT

## WEIGHTED VEST

---



Increase resistance to build strength and lose weight with this extremely comfortable vest.

- The most efficient way to add weight to a range of exercises for greater strength gains, including running, plyometric training, bodyweight exercises and many more
- Weighted vest fully adjustable with solid-metal weights
- An extremely comfortable and ergonomic design for a secure fit
- Loads the core centrally (rather than peripherally in the hands) so appropriate for dozens of exercises
- Important rehabilitation tool as can be used to improve balance and coordination
- One-year warranty

### PRODUCT INFORMATION

<b>JLWV10</b>	10kg	Weighted vest
<b>JLWV15</b>	15kg	Weighted vest
<b>JLWV20</b>	20kg	Weighted vest
<b>JLWV30</b>	30kg	Weighted vest

## MULTI-GRIP CHINNING BAR

---



This premium quality chin up/pull up bar is perfect for commercial gyms and high usage fitness spaces.

- A must for anyone developing strong, muscular and supple upper body
- Ideal for use in a home gym or garage as sits perfectly for use over door frames
- Made from strong steel featuring aluminium end caps and rubber hand grips offer the ultimate grip for sweaty workouts
- Available in grey or black with the ability to custom colour
- Weight 9kg (wall fittings not supplied)
- One-year warranty

### PRODUCT INFORMATION

<b>JTWMCB GRY</b>	Grey	L:1200mm W:290mm
<b>JTWMCB BLK</b>	Black	L:1200mm W:290mm

## FLOWIN® PRO

---



Fantastic stability trainer that's perfect for all levels of athlete and an essential rehabilitation tool.

- FLOWIN is a high-intensity, low-impact fitness routine whose patented friction technology uses your bodyweight with the surface of the board to create greater resistance for the simplest of movements
- FLOWIN PRO is recommended for commercial use, the rigid board designed for high-frequency, daily activity
- Helps tone your body, increase strength and flexibility, and maximise core stabilisation
- Designed for specialist studio programmes and is a great addition for any commercial gym floor (Comes complete with board and pads as well as a personal voucher for access to workouts online)
- Includes: one non-rollable board; one manual; two foot pads; two hands pads; and one knee pad (Board Length 1,380mm, Width 980mm. Weighs 6kg)
- One-year warranty

### PRODUCT INFORMATION

**JLFLOPRO**

FLOWIN® Pro

L:1380mm W:980mm

## FLOWIN® SPORT

---



Developed by Swedish decathletes, this portable friction-based training tool uses your bodyweight for staggering results. Designed for use outside of the gym.

- FLOWIN SPORT is recommended for personal use or outdoor PT sessions
- The board is more flexible and portable than the PRO version
- Helps tone your body, increase strength and flexibility, and maximise core stabilisation
- Comes complete with board and pads as well as a personal voucher for access to workouts online
- Includes: 1x non-rollable board, 1x Manual, 2x Foot pads, 2x Hand pads, 1 Knee pad and 1x Travel carry bag (Board dimensions: Length 1,380mm, Width 980mm. Weighs 3kg)
- One-year warranty

### PRODUCT INFORMATION

**JLFLOSPORT**

FLOWIN® Sport

L:1380mm W:980mm



## GYM RINGS

Arguably the most proven piece of bodyweight training equipment around, gym rings build strength, lean muscle and are ideal for flexibility gains.

- The perfect training tool for functional gym training, CrossFit, gymnastics and athletics
- The original suspension training system so perfect for pull-ups or dips
- Great for exercises including muscle-ups and iron-cross drills
- Adjustable band length to suit different heights and to vary the resistance
- Available in plastic or classic wood
- One-year warranty



### PRODUCT INFORMATION

**JLGR** ABS Plastic gym rings (set)

**JLGYMR28** Wooden Gym Rings 28mm

**JLGYMR32** Wooden Gym rings 32mm





## LIFELINE® USA

Lifeline are a market leader in the supply of training tools that define the benchmark in professional grade fitness equipment used for Bodyweight, Progressive Variable Resistance and Athletic Training. Lifeline's original Jungle Gym started the body weight suspension system movement and they continue to bring to market innovative tools, like their Powerwheel, offering commercial gyms and consumers great value fitness essentials.

## JUNGLE GYM® XT

---



Fantastic suspension trainer whose versatility will result in a more powerful whole-body workout.

- Its unique split design means you can quickly and easily adjust the forces on your body by changing the width of the system, meaning it morphs from a V-shaped to neutral to wide-angle suspension trainer
- Dual straps allow anchor points to be moved closer or further apart to alter training stress
- Works your whole body whether you're executing press-ups, pull-ups or simple stretches
- Rubber handle is durable, comfortable and easy to clean; solid offset heel straps ensure greater ease of access and comfort
- There's no need to clip a foot cradle on, it is all ready to go
- One-year warranty

### PRODUCT INFORMATION

**JLJG-XT** Two industrial suspension straps (8 feet each); Two integrated easy-wipe handles and easy-in foot cradles; Two comfortable in-line adjustment buckles; Two non-scuff door anchors and two strap end adjustor's; One Non-Scuff Duro-Link Anchor

---

## JUNGLE GYM® V3

---



This dual-mode, versatile bodyweight & resistance cable trainer offers an endless number of exercises and body movements.

- Adjustable anchor strap offers 8 new height adjustments and 360° rotating swivel allows fluid movement between push and pull exercises.
- Integrated non-scuff door anchors allow easy, safe, non-scuff connection to door whilst quick adjustable buckle allows quick strap length adjustment for movement between exercises and positions.
- Ergonomic handles incorporate an easy-in foot cradle made from a non-slip comfortable rubber material.
- Made using durable natural latex, Lifeline's Progressive Layering Technology™ creates super-strong cables that are more durable than common extruded fitness tubes.
- Split anchor design allows users to quickly and easily adjust the forces on the body by changing the width of the anchor point
- One-year warranty

### PRODUCT INFORMATION

**JLJG-V3** Two Adjustable Suspension Straps featuring: Non-Slip Handle; Easy-In Foot Cradle; Non-Scuff Door Anchor; Adjustable Length Technology & Patented 2-in-1 Dual-Mode Bodyweight & Resistance Cable System.  
(2) Lifeline Resistance Cable-R3 -30lb  
(2) Lifeline Resistance Cable- R5-50lb  
(1) Adjustable Anchor Strap with 360° Rotating Swivel Carry Bag  
(30) Exercise Cards for Beginner, Intermediate & Advanced Users

---



## JUNGLE GYM® XT STRAP EXTENDERS



Extend your workouts with this simple and reliable training add-on.

- Add up to 8ft to your Jungle Gym XT
- Simply attaches to a range of immovable objects including beams and poles or clips to carabiners
- The four-layer cinch loop is designed to grip rough surfaces
- Adjustable for a customised fit
- Contents: two industrial suspension straps (8ft each); two Dupont Zytel cam buckles; two Velcro excess strap-wraps; and one instructional brochure
- One-year warranty

### PRODUCT INFORMATION

**JL-JGXT-EXT**

Jungle Gym® XT strap extenders

## POWER WHEEL

---



Send your strength to another level and enjoy the ultimate core workout with arguably the finest, most durable wheel on the market.

- Independent research undertaken from the University of California, Berkeley, states the Lifeline Power Wheel is 'The Best Core Trainer in the World'
- Simply strap your feet into the adjustable fasteners and, depending on your position, challenge your abs, obliques, back, hips and glutes
- That's not all – you'll also enjoy strength development in your chest, hamstrings and calves
- The 13-inch wheel features a knobby design for better grip
- Can be used with hands and feet, both indoors and out
- One-year warranty

### PRODUCT INFORMATION

**JL-PW-2C** 13" Diameter Wheel. 22" Wide Handle is shoulder width apart. Foot Stirrups hip width apart.

---

## HEAVY WEIGHTED SPEED ROPES

---



Fire up your speed, stamina and strength with either a 'heavy' or 'extra heavy' speed rope.

- Skipping is tough. Skipping with the heavy-weighted speed rope is even tougher. But the result? Greater strength and stamina gains whatever your sport
- Speed rope comes in 'heavy' (0.75lb) or 'extra heavy' (1.25lbs) options. Both are 10ft long
- Patented length-adjustment feature ensures this rope works for everyone, whatever your height
- Durable ball-bearing handles guarantee smooth, reliable action
- Comes with 'Your Guide to Jump Fitness', written by Bobby Hinds, 'The Jump Rope King'
- One-year warranty

### PRODUCT INFORMATION

**JL-WSR-H** Heavy weighted speed rope 340g (Red)

**JL-WSR-X** Extra-heavy weighted speed rope 567g (Black)

---



## **PG 126** STUDIO

- PG 128 Studio Barbells & Racks
- PG 132 Studio Accessories (Bars & Collars)
- PG 134 Studio Dumbbells & Racks
- PG 136 Aerobic Step
- PG 136 Reebok Step & Deck
- PG 138 Fit Balls
- PG 139 Bosu



# STUDIO

- PG 140 Fit Bars
- PG 142 Ab Mat
- PG 142 Sports Mats & Hangers
- PG 146 Yoga & Rehab
- PG 150 Foam Rollers
- PG 151 Pulseroll



# STUDIO BARBELLS



## IGNITE PUMP X URETHANE STUDIO BARBELL SETS



Featuring a stylish new EU and UK Registered Design, our new Ignite Urethane Pump Sets offer a sleek, colourful look for boutiques, health clubs, and gym studio environments alike.

- New studio plate design featuring improved grip for a multitude of hand weight exercises offering more workout potential than ever before
- Highly durable urethane coating to enhance longevity whilst additional locking mechanism for multiple plate loads reduces damage to plates
- Sets all come with our new grip bar design as standard, ideal for those new to pump classes
- Perfect workout tool for a huge number of upper-body strength exercises, from shoulder press through to chest press and bicep curls
- Extended three-year warranty

### PRODUCT INFORMATION - COLOUR CODED

<b>JTISPU3-01</b>	1.25kg	Teal/Black
<b>JTISPU3-02</b>	2.5kg	Orange/Black
<b>JTISPU3-03</b>	5kg	Purple/Black
<b>JTISPU3-04</b>	7.5kg	Red/Black
<b>JTISPU3-P4</b>	1	Colour Coded Set
<b>JTISPU3-P5 GRY</b>	12	Colour Coded + Grey Rack
<b>JTISPU3-P5 BLK</b>	12	Colour Coded + Black Rack
<b>JTISPU3-P6 GRY</b>	30	Colour Coded + Grey Rack
<b>JTISPU3-P6 BLK</b>	30	Colour Coded + Black Rack

INDIVIDUAL PLATES ARE ALSO AVAILABLE

## IGNITE PUMP X RUBBER STUDIO BARBELL SETS



With an improved, sleek design, our new Ignite Pump Rubber Sets offer an understated look and feel, ideal for gyms/users looking for just a flash of colour within their studio space.

- New studio plates have been designed with improved grip for a multitude of hand weight exercises offering more workout potential than ever before (EU and UK Registered Design)
- Highly durable rubber coating to enhance longevity whilst additional locking mechanism for multiple plate loads reduces damage to plates
- Sets all come with our new grip bar design as standard, ideal for those new to pump classes
- Perfect workout tool for a huge number of upper-body strength exercises, from shoulder press through to chest press and bicep curls
- Two-year warranty

### PRODUCT INFORMATION - COLOUR CODED

<b>JTSPR3-01</b>	1.25kg	Teal/Black
<b>JTSPR3-02</b>	2.5kg	Orange/Black
<b>JTSPR3-03</b>	5kg	Purple/Black
<b>JTSPR3-04</b>	7.5kg	Red/Black
<b>JTSPSR3-P1</b>	1	Colour Coded
<b>JTSPSR3-P2 GRY</b>	12	Colour Coded + Grey Rack
<b>JTSPSR3-P2 BLK</b>	12	Colour Coded + Black Rack
<b>JTSPSR3-P3 GRY</b>	30	Colour Coded + Grey Rack
<b>JTSPSR3-P3 BLK</b>	30	Colour Coded + Black Rack

INDIVIDUAL PLATES ARE ALSO AVAILABLE



**WATCH IT IN  
ACTION NOW**



## STUDIO BARBELL RACKS



Sturdy, durable rack that holds from 12 to 30 sets of studio barbells.

- Intelligently designed barbell racks offering storage for plates, collars and bars
- Rack holding 30 sets designed in five rows of six columns for ease of storage after large pump classes
- Holding 12 sets, the smaller rack is great for more tightly packed studio spaces
- Made from solid steel, these stable racks are incredibly hard-wearing
- Available in Graphite Grey or Matte Black as standard with the option to colour match with our powder coating service
- One-year warranty

### PRODUCT INFORMATION

<b>JTSBR-10 GRY</b>	Grey	Holds up to 12 sets
<b>JTSBR-10 BLK</b>	Black	Holds up to 12 sets
<b>JTSBR-15 GRY</b>	Grey	Holds up to 30 sets
<b>JTSBR-15 BLK</b>	Black	Holds up to 30 sets

## STUDIO ACCESSORIES



### STUDIO SPRING COLLARS 30MM (PAIR)

Cost-effective light weight collars

- Suitable for studio barbell bars (30mm) with rubber ends to easily secure weights
- Spring steel with chrome finish, this proven design has made it a favourite for coaches and athletes alike
- One-year warranty

#### PRODUCT INFORMATION

<b>JTSBC</b>	30mm	Spring steel with chrome finish
--------------	------	---------------------------------



### STUDIO QUICK LOCK COLLARS 30MM (PAIR)

Secure and easy-to-use clamp collar

- Perfect for securing studio discs onto a 30mm studio barbell bar via a simple 'click and lock' system
- Black plastic composition to virtually eliminate bar damage compared to conventional collars
- One-year warranty

#### PRODUCT INFORMATION

<b>JLSBQLC</b>	30mm	Black plastic composition
----------------	------	---------------------------



### STUDIO BARBELL BAR 30MM

Cost-effective light-weight bar for studio use

- Stainless steel 30mm black bar designed for Jordan studio sets and ideal for classes.
- For use with our studio barbell discs and collars
- One-year warranty



#### PRODUCT INFORMATION

<b>JTSBB-B</b>	30mm	Black Studio Barbell
<b>JTSBB2</b>	30mm	Black Studio Barbell with grip markings



### STUDIO CLAMP COLLARS 30MM (PAIR)

Secure and easy-to-use clamp collar

- Perfect for securing studio discs onto a 30mm studio barbell bar via a simple 'Click & Lock' system
- Grey plastic composition to virtually eliminate bar damage compared to conventional collars
- One-year warranty

#### PRODUCT INFORMATION

<b>JLSBCC</b>	30mm	Click & Lock System
---------------	------	---------------------



**BE MORE.  
TRAIN MORE.**

**AIREX®  
BALANCE PAD  
PG 141**

AIREX



# STUDIO DUMBBELLS

## HEX STUDIO DUMBBELLS (NEOPRENE)



Classy, vibrant set of studio dumbbells that add colour to any workout.

- Stunning set of dumbbells that are great for commercial and boutique gyms, and perfect for adding a sprinkle of colour to home workouts
- Anti-roll design keeps them nice and tidy, while the grip is comfortable and secure
- High-quality neoprene covering won't scuff or mark your floor
- Colour coded for easy identification
- Ideal weights for travelling, so you never have an excuse not to work out
- One-year warranty

### PRODUCT INFORMATION

<b>JF-NSD-05</b>	0.5kg	Pink	<b>JF-NSD-6</b>	6kg	Teal
<b>JF-NSD-1</b>	1kg	Teal	<b>JF-NSD-7</b>	7kg	Orange
<b>JF-NSD-2</b>	2kg	Orange	<b>JF-NSD-8</b>	8kg	Purple
<b>JF-NSD-3</b>	3kg	Purple	<b>JF-NSD-9</b>	9kg	Red
<b>JF-NSD-4</b>	4kg	Red	<b>JF-NSD-10</b>	10kg	Black
<b>JF-NSD-5</b>	5kg	Black			

## STUDIO DUMBBELL RACK



Great-looking and great-value steel rack that holds up to 42 pairs of dumbbells.

- Space saving dumbbell rack that elegantly holds 11 columns of dumbbells (42 pairs of dumbbells)
- Locking system to lock all dumbbells in place, adding safety and security
- Lockable wheels add portability
- Great storage solution for commercial gyms and group training studio spaces
- One-year warranty

### PRODUCT INFORMATION

<b>JT-SDR BLK</b>	Grey	H:1080mm L:1020mm D:620mm
<b>JT-SDR GRY</b>	Black	H:1080mm L:1020mm D:620mm
<b>JF-NSD-P1 GRY</b>	Grey	Rack plus 42 pairs of dumbbells 0.5-5kg
<b>JF-NSD-P1 BLK</b>	Black	Rack plus 42 pairs of dumbbells 0.5-5kg
<b>JF-NSD-P2 GRY</b>	Grey	Rack plus 42 pairs of dumbbells 0.5-10kg
<b>JF-NSD-P2 BLK</b>	Black	Rack plus 42 pairs of dumbbells 0.5-10kg



# STUDIO ESSENTIALS



## AEROBIC STEP



Classic aerobic step that'll absorb the highest-intensity aerobic session to maximise your training benefits.

- Designed for a range of exercises that work your entire body, from your legs and glutes to the core, arms and shoulders
- Absorbent platform handles the impact of the most aggressive workout, whether using in a group exercise class or individually at home
- You can raise height by inserting risers beneath the step (1x pair of risers included)
- Feet and base feature non-slip coating
- Maximum height 203mm, Width 400mm, Length 1,090mm
- One-year warranty

### PRODUCT INFORMATION

<b>JTAS</b>	Black/Grey	Aerobic Step
<b>JTASR</b>	Pair	Aerobic step risers

## REEBOK STEP & DECK



The Reebok step and deck offer a versatile, multi-functional system that can adjust to multiple exercises and strength training workouts.

- Dimple textured surfaces and non-slip floor blocks provide a safe surface to step on
- The Reebok step has 3 adjustable height positions and holds up to 21 stone
- The Reebok Deck offers you an incline/decline bench as well as a seat
- Step: L900 W350 H150/200/260mm
- Deck: L1100 W330 H205/355mm
- One-year warranty

### PRODUCT INFORMATION

<b>JLRAS</b>	7.5kg	Reebok Aerobic Step
<b>JLRD</b>	12.2kg	Reebok Deck
<b>JLRAS-C</b>		Reebok Clip
<b>JLRAS-R</b>	0.5kg	Reebok Riser

## PRO FIT BALL



Anti-burst gym balls that come in three sizes to suit different heights and weights.

- Great gym balls to strengthen and tone your core muscles, either at home or in the gym
- Develops overall body muscle, balance and co-ordination
- Unique anti-burst technology ensures this will endure many years of regular use; tested to withstand 1200kg of weight
- Includes light-weight hand pump
- Available as a set of three with rack, and two sets of three with rack
- One-year warranty

### PRODUCT INFORMATION

<b>JTCFB55</b>	Light Grey	55cm Fit Ball boxed with pump
<b>JTCFB65</b>	Grey	65cm Fit Ball boxed with pump
<b>JTCFB75</b>	Dark Grey	75cm Fit Ball boxed with pump

## PRO FIT BALL RACK



Solid steel Fit Ball rack that holds either three or six gym balls.

- Beautiful design meets solid construction in this classic storage rack for Fit Balls
- Available in a 3 tier or 6 tier rack
- Six ball rack includes caster wheels for portability
- Available in Graphite Grey or Matte Black as standard, with other colour options available
- One-year warranty

### PRODUCT INFORMATION

<b>JTJSR-3 GRY</b>	Grey	holds 3 balls	H:1530mm L:765mm D:765mm
<b>JTJSR-3 BLK</b>	Black	holds 3 balls	H:1530mm L:765mm D:765mm
<b>JTJSR-06 GRY</b>	Grey	holds 6 balls	H:1530mm L:930mm D:930mm
<b>JTJSR-06 BLK</b>	Black	holds 6 balls	H:1530mm L:930mm D:930mm

## BOSU BALANCE TRAINER

---



Fantastic stability trainer that's perfect for all levels of athlete and an essential rehabilitation tool.

- Unique and highly acclaimed functional training tool that increases core strength, refines balance and co-ordination, and improves proprioception, which pays off for every sport and gym competition you'll take part in
- Can be flipped and used on both sides to increase stability and endurance
- Base doesn't skid or mark the floor when using in a commercial gym setting
- Comes complete with floor pump and manual
- One-year warranty

### PRODUCT INFORMATION

---

<b>JLBOSUB</b>	BOSU	H:254mm L:673mm D:635mm. Weight 7.7kg. Maximum load is 136kg
----------------	------	---

---

## BOSU BALANCE RACK

---



Maximise your gym space and maintain order with this fine steel rack that stores up to five Bosu Balance Trainers.

- Impressive, sturdy rack made from solid steel
- Upright design to maximise space available
- Rubber feet to keep your gym/studio floor mark free
- Available in Matte Black or Graphite Grey to complement every gym
- Additional colour options available with our powder coating service
- One-year warranty

### PRODUCT INFORMATION

---

<b>JTBOSUR GRY</b>	Rack Grey	H:1560mm D:680mm W:720mm
<b>JTBOSUR BLK</b>	Rack Black	H:1560mm D:680mm W:720mm

---

## FIT BARS

---



High-quality set of fit bars for a range of exercises that are perfect for boosting upper and lower body strength and flexibility.

- Superb set of bars for a range of exercises including lunges, squats, sit-ups and upper-body exercises
- Solid steel core evenly spreads weight as well as cranking up durability
- Encased in high-quality foam for added comfort
- Ideally suited to studio classes, personal training sessions or circuit-training sessions
- Complete set available (40 bars with rack)
- One-year warranty

### PRODUCT INFORMATION

<b>JTFB2-3</b>	Yellow	3kg (1000mm bar)
<b>JTFB2-4</b>	Teal	4kg (1000mm bar)
<b>JTFB2-5</b>	Orange	5kg (1000mm bar)
<b>JTFB2-6</b>	Purple	6kg (1100mm bar)
<b>JTFB2-7</b>	Red	7kg (1250mm bar)

## FIT BAR RACK

---



Portable and robust rack that stores up to 40 Fit Bars.

- Highly practical and hard-wearing steel rack that sits perfectly in any studio environment
- Smooth-running castor wheels for portability and lockable when in position for added safety
- Available in Graphite Grey or Matte Black as standard, with other colour options available
- Fit bar set available (with 40 Fit Bars)
- One-year warranty

### PRODUCT INFORMATION

<b>JTFBR GRY</b>	Grey	H:1150mm W:810mm D:860mm	35kg
<b>JTFBR BLK</b>	Black	H:1150mm W:810mm D:860mm	35kg

## AIREX® BALANCE PAD

---



Suitable for barefoot balance training and rehabilitation exercises, the AIREX Balance Pad is an essential tool for active therapy.

- Fantastic training tool to improve conditional and coordinative abilities in combination, for example strength, endurance, differentiation and balance
- With a foam thickness of 6cm, the body is constantly challenged in order to maintain balance and stabilise the joints
- Hygienic and easy to clean, the pad's outer material finish is antimicrobial
- Multifunctional, this balance pad can be used indoors and outdoors due to its water resistance
- For use barefoot or with socks (no trainers)

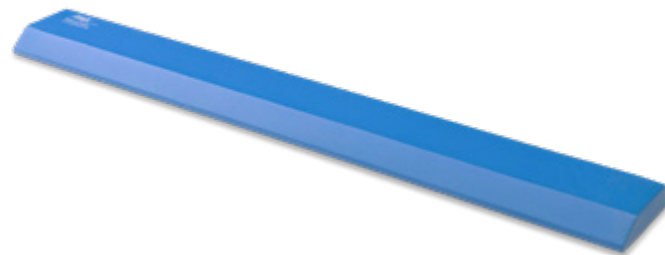
### PRODUCT INFORMATION

**JLABP-B**      Blue      L:500mm W:410mm H:60mm

---

## AIREX® BALANCE BEAM

---



Developed especially for clinical balance and proprioception exercises for physiotherapists, the AIREX Balance Beam is ideal for balance training, whether in the gym or at home.

- Yielding and supportive, its design provides protection against injuries
- Using deeper muscles compared to performing the same exercises without the Balance Beam, the control functions in the brain and receptors in the joints are heavily stimulated creating a more fulfilling workout
- Hygienic and easy to clean, the pad's outer material finish is antimicrobial
- Multifunctional this balance beam can be used indoors and outdoors due to its water resistance
- For use barefoot or with socks (no trainers)

### PRODUCT INFORMATION

**JLABB-B**      Blue      L:1600mm W:230mm H:6mm

---



# MATS & HANGERS

## AB MAT

---



Compact and portable ab mat that will maximise the comfort of sit-ups and planks.

- Simple but brilliant accessory that allows users to perform more effective sit-ups and crunches, while reducing discomfort and sustaining better balance
- Works abs, obliques and lower back
- Core training accessory for any gym
- Ideal for transporting to PT sessions and boot camps due to its compact design
- Can also be used as knee support for a whole range of exercises
- One-year warranty

### PRODUCT INFORMATION

<b>JLAM2</b>	Black Leather	Solid base
--------------	---------------	------------

---

## 40MM MULTI-PURPOSE STRETCH MATS

---



High-quality stretch mats for use in gyms, schools and specialist MMA floor work sessions.

- Non-slip base and slip-resistant textured surface provides a stable surface to perform stretches and exercises on
- Comes in two colours: red or black
- Ideal for Taekwondo, Karate and many other martial arts (meets international judo standards)
- Easy wipe clean vinyl surface so they are perfect for clubs that need to maintain hygiene levels and clean equipment quickly
- High-density padding (4cm thickness) supports and cushions your joints whilst you train
- One-year warranty

### PRODUCT INFORMATION

<b>JTMPM-04R</b>	Red	W:1000mm L:2000mm D:40mm
<b>JTMPM-04B</b>	Black	W:1000mm L:2000mm D:40mm

---

## SPORTS MAT STORAGE RACK



Heavy duty sports mat storage for gyms with huge demand for group fitness sessions.

- Holds up to 70 x 9mm mats
- Stylish yet affordable storage solution for larger commercial gyms and schools (EU and UK Registered Design)
- Additional colour options available with our powder coating service
- Height 1820mm, Length 720mm, Depth 1020mm
- Sports mats available separately
- One-year warranty

### PRODUCT INFORMATION

---

**JTSMR2-BLK** Sports Mat Storage Rack Single Sided Black

---

**JTSMR2-GRY** Sports Mat Storage Rack Single Sided Grey

---

**JTSMR3-BLK** Sports Mat Storage Rack Double Sided Black

---

**JTSMR3-GRY** Sports Mat Storage Rack Double Sided Grey

## SPORTS MAT HANGER



An EU and UK Registered Design, this adjustable and tough wall mat hanger holds up to 20 mats.

- Simple but solid design which can be screwed into the wall and hold any mats (in addition to Jordan)
- Available in Graphite Grey or Matte Black
- Wall fittings not supplied
- One-year warranty

### PRODUCT INFORMATION

---

**JTSMH2-BLK** Sports Mat Wall Hanger Black

---

**JTSMH2-GRY** Sports Mat Wall Hanger Grey

---

**JTSMH3-BLK** Sports Mat Adjustable Wall Hanger Black

---

**JTSMH3-GRY** Sports Mat Adjustable Wall Hanger Grey



## SPORTS MATS



Top selling mat that's suitable for any exercise performed on the floor.

- Essential piece of fitness gear for gyms and homes, as well as for use in physiotherapy and schools
- Unique 'Air Care System' minimises impact on joints while the anti-slip surface keeps things stable
- Huge number of practical features: fast and easy to install; quick to repair and maintain; and incredibly durable
- Comes in three colours: black, grey or blue
- Available in various sizes and thickness

### PRODUCT INFORMATION

<b>JLSM9BK 120</b>	Black	L:1200m W:600mm D:9mm
<b>JLSM9B 120</b>	Blue	L:1200m W:600mm D:9mm
<b>JLSM9G 120</b>	Grey	L:1200m W:600mm D:9mm
<b>JLSM9-BK 160</b>	Black	L:1600m W:600mm D:9mm
<b>JLSM9B 160</b>	Blue	L:1600m W:600mm D:9mm
<b>JLSM9G 160</b>	Grey	L:1600m W:600mm D:9mm
<b>JLSM19BK 120</b>	Black	L:1200m W:600mm D:19mm
<b>JLSM19B 120</b>	Blue	L:1200m W:600mm D:19mm
<b>JLSM19G 120</b>	Grey	L:1200m W:600mm D:19mm
<b>JLSM19BK 160</b>	Black	L:1600m W:600mm D:19mm
<b>JLSM19B 160</b>	Blue	L:1600m W:600mm D:19mm
<b>JLSM19G 160</b>	Grey	L:1600m W:600mm D:19mm

## AIREX® FITLINE 140 10MM SPORTS MATS



This Fitline140 AIREX Mat is an extremely lightweight exercise mat with a stylish rib design, perfect for studio workouts, stretching and more.

- Surface structure and special foam technology prevent slipping
- Soft, supple and cushioning insulating provides ultimate comfort
- Yielding and supportive, it's absorption material offers protection against injuries
- Ultra-hygienic and simple to clean due to its antimicrobial finishing
- Hard-wearing material for many years of use
- One-year warranty

### PRODUCT INFORMATION

<b>JLSM10-CH</b>	Charcoal Grey	L:1400mm W:600mm D:10mm
<b>JLSM10-CH</b>	Water Blue	L:1400mm W:600mm D:10mm

## AIREX® WALL BRACKET



The AIREX Wall Bracket is an effective storage option for your AIREX Fitline 140 and Yoga ECO mats.

- Made with stainless chrome steel for increased durability
- Easy to assemble and drape mats over post workout
- Effective and simple storage solution for commercial gyms and studios
- One-year warranty

### PRODUCT INFORMATION

<b>JLAWB</b>	Silver	W:650mm
--------------	--------	---------

# YOGA & REHAB



## YOGA MAT

---

Superb stretching mat with comfort matches its portability and durability.

- High-performance mat that'll withstand the rigours of a vigorous yoga session, while providing excellent grip
- Heavyweight, robust mat that provides a firm, even surface over uneven floors
- Dense, high-rebound cushioning
- Reversible colour (light grey/green) to change the feel of your studio space
- Comes with tie so ready to roll up after your session for added portability
- One-year warranty



### PRODUCT INFORMATION

**JLYM**

Yoga Mat Green/Grey

L:1740mm W:625mm

---



## YOGA BLOCK

---

Great training block to either assist or enhance your yoga pose, so perfect for beginners and advanced yoga fanatics alike. One-year warranty

### PRODUCT INFORMATION

**JLYB**

Yoga Block

---

## YOGA STRETCH STRAP

---

Maximise each and every yoga pose with this highly affordable yoga strap. One-year warranty

### PRODUCT INFORMATION

**JLYSRP**

Yoga Strap

---





## AIREX® YOGA ECO CORK MAT



This unique ECO Cork mat offers a fulfilling natural feeling for your gym/ studio facility, perfect for everything from Vinyasa flow to calming Yin Yoga.

- Eco- friendly and sustainable, the natural cork surface creates warmth and insulation for the ultimate experience
- Non-slip with a natural rubber base, this beautifully crafted mat helps prevent injury
- Perfect for use in all temperatures and climates so great for use indoors and out
- Anti-microbial, cork naturally kills bacteria, germs and odours making it sweat proof
- PVC free

### PRODUCT INFORMATION

**JLAYM-C**

Natural Cork

L:1830mm W:610mm D:4mm

## AIREX® YOGA ECO CORK BLOCK



Feel the nature and warmth during your yoga workout, with this natural cork yoga block.

### PRODUCT INFORMATION

**JLAYB-C**

Natural Cork

L:225mm W:150mm D:74mm



## AIREX® YOGA ECO GRIP MAT



The ultimate choice for nature-loving yogis, this Eco-friendly yoga mat offers maximum grip for all your favourite yoga poses.

- Offers ultimate grip with its non-slip, flat lying base
- Insulating, soft and warm underfoot providing the ultimate Yoga / Pilates experience
- Eco-friendly, these mats are made from superior recycled PU with a natural rubber base
- Selection of vibrant colours to choose from
- PVC free

### PRODUCT INFORMATION

<b>JLEGM-PNK</b>	Pink	L:1830mm, W:610mm, D:4mm
<b>JLEGM-PUR</b>	Purple	L:1830mm, W:610mm, D:4mm

## AIREX® CALYANA 4.5MM YOGA MATS



This Fitline140 AIREX Mat is an extremely lightweight exercise mat with a stylish rib design, perfect for studio workouts, stretching and more.

- Surface structure and special foam technology prevents slipping
- Soft, supple and cushioning insulating provides ultimate comfort
- Yielding and supportive, it's absorption material offers protection against injuries
- Ultra-hygienic and simple to clean due to its antimicrobial finishing
- Hard-wearing material for many years of use

### PRODUCT INFORMATION

<b>JLSM10-CH</b>	Charcoal Grey	L:1850 W:660mm D:4.5mm
<b>JLSM10-WB</b>	Water Blue	L:1850 W:660mm D:4.5mm

## SOFT ROLLER

---



Highly portable, hard-wearing roller that's ideal for rehab, prehab, faster recovery or simply increased performance.

- Fantastic roller for the hard-working athlete to loosen up muscles and prevent injury before and after a workout
- Use after an intense session to ease tight muscles and accelerate the recovery process
- Constructed from a blend of EVA and polyolefin, providing durability in a lightweight form
- Light green colour, complementing the full Jordan Yoga range
- Portable and available in two sizes
- One-year warranty

### PRODUCT INFORMATION

---

<b>JLSSR</b>	Short Soft Roller	L: 335mm D: 140mm
<b>JLLSR</b>	Long Soft Roller	L: 615mm D: 140mm

## FOAM ROLLER

---



The perfect lightweight stretching tool for rehab and prehab.

- Fantastic foam roller that's ideal for yoga, rehab and fitness work
- Performs effective massage, improves flexibility and reduces pain
- Can be used on working muscles including hips, calves, hamstrings, quadriceps and back
- Constructed from a blend of EVA providing durability in a lightweight form
- Portable and available in two sizes
- One-year warranty

### PRODUCT INFORMATION

---

<b>JLSFR</b>	Short Foam Roller	L: 450mm, D: 150mm
<b>JLLFR</b>	Long Foam Roller	L: 980mm D: 150mm

## PULSEROLL VIBRATING FOAM ROLLER

This nifty device will help increase joint range of motion, enhance running and workout performance and most importantly, reduce post workout muscle soreness.

- Portable and lightweight this fantastic roller has 4 vibration speed settings
- Use to reduce muscular pain, relieve next day soreness and increase blood flow
- Approved by physios and pro athletes as a rapid training recovery device
- Flush away lactic acid by massaging out knots and tension
- 3-hour rechargeable battery
- One-year warranty

### PRODUCT INFORMATION

**JLPR-VFR**      Black      Pulseroll Vibrating Foam Roller



## PULSEROLL VIBRATING PEANUT BALL



The newly designed Pulseroll Vibrating Peanut Ball gives you rapid training recovery, increases blood flow while flushing away lactic acid after your workouts and training.

- New improved design and motor
- 4 vibration levels
- Average battery life 3 hours
- Remote control ring to change vibration speed
- One-year warranty

### PRODUCT INFORMATION

**JLPR-VMB**      Black      Pulseball Vibrating Peanut Ball



**SEE PAGE 117  
FOR MASSAGE GUNS**

## PG 152 COMBAT

- PG 154 Jordan Punch bag
- PG 154 Heavy Hitters - Aqua Bag
- PG 156 Thai Pads
- PG 156 Storage Cage
- PG 157 Hatton Boxing
- PG 158 Punch Bags
- PG 160 Speed & Reaction Balls





# COMBAT

PG 161	Pro Leather Gloves
PG 162	PU Gloves
PG 163	Pads
PG 164	Body Belt & Wraps
PG 166	Boxing Stations
PG 167	Wall Brackets



## JORDAN FREE STANDING PUNCH BAG



Designed for commercial gyms and Boutique studios, this sturdy boxing punch bag is a great addition for studio and class workouts, in addition to functional workouts and Personal Training sessions on the gym floor.

- Its unique spinal structure with internal cylinder interchanges cement and expanded foam, provides a winning combination to absorb impact and vibrations
- Made from a textured, hard wearing material, long-lasting and soft to the touch (Not designed for kicking)
- It's heavyweight (75kg) and strong base make this a great alternative for clubs and gyms who cannot put up punch bags with wall fixings.
- Easy to transport and install with a cylinder and base made separate, also benefiting from ease of storage
- Tested up to 960,000 hits
- One-year warranty

### PRODUCT INFORMATION

**JLBOX-FSPB** 75kg H:1850mm D:334mm Base D:750mm

## HEAVY HITTERS - AQUA BAG



Our Heavy Hitter Aqua Punch Bags are a great alternative to traditional Boxing Bags.

- Unlike traditional bags that can sag over time, with aqua bags you simply need a water top-up, so you can train longer and harder, with every hook, jab and punch. Commercial grade vinyl covering for ultimate strength
- UV resistant so you can use both outside, and within your boxing club/ garage gym
- Water filling nozzle included and heavy-duty shackle included (ask us about outdoor use shackles as galvanizing required)
- Choose from a slick black or fiery Lava Red to match your gym space
- Available in 11", 16", 18", 22" size bags

### PRODUCT INFORMATION

<b>JF-HHWPB11-BLK</b>	11"	Water Punch Bag	Black
<b>JF-HHWPB16-BLK</b>	16"	Water Punch Bag	Black
<b>JF-HHWPB16-RED</b>	16"	Water Punch Bag	Red
<b>JF-HHWPB18-BLK</b>	18"	Water Punch Bag	Black
<b>JF-HHWPB18-RED</b>	18"	Water Punch Bag	Red
<b>JF-HHWPB22-BLK</b>	22"	Pro Water Punch Bag	Black
<b>JF-HHWPB22-RED</b>	22"	Pro Water Punch Bag	Red
<b>JF-HHABCK</b>		Aqua Bag Chain Kit	

**HEAVY HITTERS**  
WATER FILLED PUNCH BAG



## THAI PAD



Great-value, newly designed pad that's commonly used in Thai boxing, MMA and kick boxing.

- Attractively designed Thai pad constructed from heavy-duty laminated PVC, built to last
- Lightweight and shock-absorbent high-impact foam works both for user and training partner
- Reinforced handle strengthens grip and instils greater confidence
- Double arms straps with Velcro fasteners clamps the user into place securely
- Versatile kick pad, an essential tool for striking development
- One-year warranty

### PRODUCT INFORMATION

**JLBOX-TP3** Black/White H:400mm W:210mm D:100mm

## STORAGE CAGE



Keep your gym neat and tidy and organised with this sturdy and portable storage cage.

- Boxing equipment, med balls and bags – all this and more can be neatly stored away in this solid steel cage
- Lockable lid adds security. Lockable wheels add mobility
- Mild steel frame with steel mesh and a powder coat finish means it can stand the test of time
- Drop down front panel provides alternative access
- One-year warranty

### PRODUCT INFORMATION

<b>JTSC-BLK</b>	Black	H:780mm L:1350mm D:650mm
<b>JTSC-GRY</b>	Grey	H:780mm L:1350mm D:650mm

# HATTON BOXING



PG 161

**HATTON HOOK &  
JAB PADS**

## HATTON HEAVY-DUTY PUNCH BAG

---



Build punching power with this quality punch bag that's made from a choice of two materials: leather or PVC.

- Research-proven bag fill exclusive to Hatton Boxing remains evenly distributed. That means it retains shape during the toughest of workouts
- Unique properties guarantee maximum absorption on impact and so minimising force on contact to allow you to work harder and longer
- Each bag comes with a six-hook chain for maximum support and safety
- Available in two sizes: 100cm x 40cm or 130cm x 40cm
- One-year warranty

### PRODUCT INFORMATION

<b>JLBOX-HAT100BPU</b>	PU	Hatton heavy bag 100 x 40
<b>JLBOX-HAT100BL</b>	Leather	Hatton heavy bag 100 x 40
<b>JLBOX-HAT130BPU</b>	PU	Hatton heavy bag 130 x 40
<b>JLBOX-HAT130BL</b>	Leather	Hatton heavy bag 130 x 40

## HATTON 3-IN-1 LEATHER PUNCH BAG

---



Essential bag for every gym whose versatility makes it ideal for the home gym/garage too.

- Superb 3-in-1 bag that combines the benefits of training with a straight punch bag, maize bag and a floor-to-ceiling ball
- Perfect for practising the full range of punches from hooks to upper cuts
- Bag is beautifully hand-crafted from leather with a 1-inch inner foam lining to protect you on impact
- Features a soft, rag-filled lower ball and granule-filled upper ball. Both retain their shape however brutal the workout
- Note: the bag requires hooks for a secure fixing (contact our service team for options)
- One-year warranty

### PRODUCT INFORMATION

<b>JLBOX-HATBTRP</b>	Leather	1" inner foam
----------------------	---------	---------------

## HATTON MAIZE BAG

---



Take your boxing footwork and mobility to another level and improve accuracy, agility and speed thanks to this impressive, robust maize punch bag.

- The ideal bag to improve lateral body movement, footwork, timing and defensive head movements
- Constructed from the highest-quality leather with a PU option also available.
- Research-proven bag fill exclusive to Hatton Boxing remains evenly distributed. That means it retains shape during the toughest of workouts
- Inner-foam lining ensures maximum absorption on impact and so minimising force on contact to allow you to work harder and longer
- Complements the benefits of training with a straight punch bag
- One-year warranty

### PRODUCT INFORMATION

<b>JLBOX-HATMB 13</b>	PU	Hatton maize bag
<b>JLBOX-HATMBL 13</b>	Leather	Hatton maize bag

## HATTON UPPER CUT PUNCH BAG

---



Throw an uppercut like Ricky Hatton himself with this high-quality and hard-wearing bag.

- Perfect punch bag to practice and perfect your upper cut and combination punches
- Handmade from quality leather or PU that not only looks great and adds a seal of quality, but will also absorb the hardest of punches
- Research-proven bag fill exclusive to Hatton Boxing remains evenly distributed. That means it retains shape during the toughest of workouts
- Unique properties guarantee maximum absorption on impact and so minimising force on contact to allow you to work harder and longer
- Complements the benefits of training with a straight punch bag
- One-year warranty

### PRODUCT INFORMATION

<b>JLBOX-HATUCBPU</b>	PU	920mm x 500mm
<b>JLBOX-HATUCBL</b>	Leather	920mm x 500mm

## HATTON SPEED BALL

---



A must-have piece of training equipment for any boxer, the Speed Ball improves hand-eye co-ordination, speed and agility.

- Improve reaction times, hand speed and co-ordination with this tough speed ball
- Constructed from heavy-duty leather that'll absorb the best you've got for years to come
- Reinforced nylon loop attachment guarantees durability and minimum wear
- Begin your speed-ball training with the three-rebound method. Every time you hit the ball, it'll rebound three times before you hit it again. Start slowly and work up to a faster rhythm
- Attach via a free-standing or wall-mounted unit (available separately)
- One-year warranty

### PRODUCT INFORMATION

JLBOX-HATSB

Hatton speed ball

---

## HATTON FLOOR-TO-CEILING BALL

---



Practice defensive techniques, movement and footwork, with this superb and great-value reaction ball.

- Improve hand-eye co-ordination, speed, reaction time and agility with this essential piece of affordable kit
- Unpredictable ball movement focuses your mind – and hands – so you learn to read the bag and learn to expect the unexpected
- Quality hand-stitched and riveted ball that's extremely robust
- Fitted with heavy-duty D-rings at both top and bottom
- Comes with a bungee cord and adjustable leather straps for floor and ceiling attachment
- One-year warranty

### PRODUCT INFORMATION

JLBOX-HATPB

Hatton punching ball

---



## HATTON PRO LEATHER LACE UP GLOVES



Elegant pair of quality leather laced gloves that are perfect for sparring.

- These superb gloves are ideal for sparring as they won't punish your opponent
- Robustly constructed from an outer layer of leather and an injected moulded design
- Aesthetically pleasing Hatton printed logo on the outer plus woven Hatton wings label on the wrist
- Extremely comfortable to wear. Also extremely hard-wearing
- Lace-up system clamps hands securely in place
- One-year warranty

### PRODUCT INFORMATION

<b>JLBOX-HATPG16</b>	16oz	Pro leather lace up gloves
<b>JLBOX-HATPG14</b>	14oz	Pro leather lace up gloves
<b>JLBOX-HATPG12</b>	12oz	Pro leather lace up gloves
<b>JLBOX-HATPG10</b>	10oz	Pro leather lace up gloves
<b>JLBOX-HATPG08</b>	08oz	Pro leather lace up gloves

## HATTON PRO LEATHER VELCRO GLOVES



Superb pair of Velcro gloves that come into their own when sparring.

- These superb gloves are ideal for sparring as they won't punish your opponent
- Robustly constructed from an outer layer of leather and an injected moulded design for improved fist formation
- Aesthetically pleasing Hatton printed logo on the outer plus woven Hatton wings label on the wrist
- Extremely comfortable to wear. Also extremely hard-wearing
- Neat Velcro system clamps hands securely in place
- One-year warranty

### PRODUCT INFORMATION

<b>JLBOX-HATSG16</b>	16oz	Pro leather Velcro gloves
<b>JLBOX-HATSG14</b>	14oz	Pro leather Velcro gloves
<b>JLBOX-HATSG12</b>	12oz	Pro leather Velcro gloves
<b>JLBOX-HATSG10</b>	10oz	Pro leather Velcro gloves
<b>JLBOX-HATSG08</b>	08oz	Pro leather Velcro gloves

## HATTON PU COOL FLOW FITNESS GLOVES



Cool Flow technology heightens comfort during sparring or fitness workouts.

- The perfect set of gloves for sparring sessions or fitness workouts like Boxfit
- Polyurethane-constructed outer layer looks slick and retains its shape during workouts. Also extremely durable
- New Cool Flow technology eases clamminess of hands and so adds comfort
- Injected moulded design steers you into the perfect fist formation
- Neat system clamps hands securely in place
- One-year warranty

### PRODUCT INFORMATION

<b>JLBOX-HATFG14</b>	14oz	PU CoolFlow Fitness gloves
<b>JLBOX-HATFG12</b>	12oz	PU CoolFlow Fitness gloves
<b>JLBOX-HATFG10</b>	10oz	PU CoolFlow Fitness gloves
<b>JLBOX-HATFG08</b>	08oz	PU CoolFlow Fitness gloves

## HATTON PU SPARRING GLOVES



Superb pair of Velcro gloves that are ideal for sparring or fitness workouts.

- These impressive gloves are ideal for sparring as they won't punish your opponent
- Constructed from an outer layer of polyurethane and an injected moulded design for improved fist formation and greater comfort
- Aesthetically pleasing Hatton printed logo on the outer plus woven Hatton wings label on the wrist
- Extremely comfortable to wear. Also extremely hard-wearing
- Neat Velcro system clamps hands securely in place
- One-year warranty

### PRODUCT INFORMATION

<b>JLBOX-HATBG16</b>	16oz	PU boxing gloves
<b>JLBOX-HATBG14</b>	14oz	PU boxing gloves
<b>JLBOX-HATBG12</b>	12oz	PU boxing gloves
<b>JLBOX-HATBG10</b>	10oz	PU boxing gloves
<b>JLBOX-HATBG08</b>	08oz	PU boxing gloves

## HATTON LEATHER AIRPRO FOCUS PADS

---



First-class quality leather pads, ideal for speed and combo drills.

- Air Flow technology provides maximum protection for the toughest boxing session
- Quality, shock absorbent padding to withstand strong blows
- Sophisticated ventilation to prevent sweat build up and keep your hands cool
- Offers improved grip to ensure a sturdy focus for your training partner.
- Hard wearing, and durable, these pads ensure stability of your hands and wrists
- One-year warranty

### PRODUCT INFORMATION

**JLBOX-HATFPAD**

Hatton Leather Airpro Focus Pads (pair)

## HATTON HOOK & JAB PADS

---



Great value quality PU pads built to absorb the strongest punches.

- Small surface area to help develop precision and timing, sharpening hand speed for the boxer
- Shock absorbing foam adds safety and comfort to withstand strong blows
- Easy slip on design, ideal for functional circuits due to time to put on.
- Anatomically corrects hand position to limit injury
- Tough, and strong, these pads reduce impact forces so you can train harder for longer
- One-year warranty

### PRODUCT INFORMATION

**JLBOX-HATHJPAD**

Hatton PU Curved Hook and Jab Pads (pair)

## HATTON PRO LEATHER BODY BELT

---



An unmatched, quality leather protection belt for trainers and coaches.

- Body pad that offers unrivalled protection for boxing and combat trainers
- Constructed from extra-thick, top-grade cow hide leather for durability, quality and a slick look
- Padded with five layers of cloth-fibre webbing and high-density latex foam. This provides incredibly shock absorption to minimise stress
- Secured in place by rear Velcro strap above waist and cross-shaped straps around back and shoulders
- Suits all shapes and sizes of trainers
- One-year warranty

### PRODUCT INFORMATION

**JLBOX-HATBB**

Hatton Pro Leather Body Belt

---

## HATTON HAND WRAPS

---



Protect your hands and wrists against punch-related injuries with these affordable wraps.

- The finest stretch cotton for more support and a better fit when wrapping hands
- Features thumb loop with Velcro fastening
- Slick-looking printed Hatton logo
- One-year warranty

### PRODUCT INFORMATION

**JLBOX-HATHW4**

Hatton hand wraps 4mtr

**JLBOX-HATHW2.5**

Hatton hand wraps 2.5mtr

---



“

We've been working closely with Jordan for two years now, so we've seen first-hand what an excellent logistical operation they have. Their knowledge of both our products and our unique customer requirements really sets them apart from other traditional third party logistics providers

**JON EADE**  
**MANAGING DIRECTOR**  
**HATTON BOXING**

## 4-IN-1 BOXING STATION



Ultimate free-standing boxing station for gyms tight on space, tailored to suit your own specification.

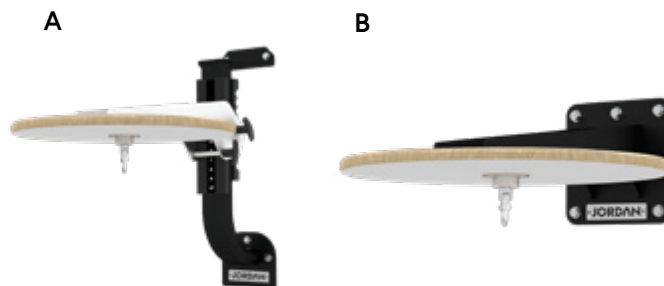
- Choose from 3 punch bag arms and speedball platform or 4 punch bag arms
- Heavy duty steel frame for safe boxing workout
- Can be used simultaneously by 4 people
- Choose accessories from our Hatton range
- H2530mm, L2040mm, W2040mm, Weight: 116kg
- Lifetime warranty on frame

### PRODUCT INFORMATION

**JL-7000** 3 bag arms and speed ball platform (punch bags not included)

**JL-7001** 4 bag arms (punch bags not included)

## ADJUSTABLE AND FIXED SPEEDBALL PLATFORM



Robust and well-made speedball platforms for commercial gyms.

### A. ADJUSTABLE SPEEDBALL PLATFORM

- Features a unique 10 positional system with numeric indicators for quick, safe, and easy height adjustments over 225mm
- Constructed using 100x50x3 flat sided oval steel, with a 6mm laser cut supporting plate, 30mm thick birch plywood board with white covering and a dual bearing swivel to ensure the platform remains stable during use and to also provide a perfect rebound from the speedball.
- Secured to a solid wall/surface with 5 fixing points to make certain it will never fail. Supported by a lifetime main frame commercial warranty

### B. FIXED SPEEDBALL PLATFORM

- Constructed using 6mm laser cut steel to support a 30mm thick birch plywood board with a white covering that incorporates a dual bearing swivel to ensure the platform remains stable during use and to also provide a perfect rebound from the speedball.
- Can be secured to a solid wall/surface with 5 fixing points to guarantee it will never fail

### PRODUCT INFORMATION

**JLBOX-EASB** Elite Adjustable Speedball (Inc. Swivel)

**JLBOX-EFSB** Elite Fixed Speedball (Inc. Swivel)

# WALL BRACKETS

Commercial and home-use punch-bag brackets complete with fixing for all budgets and bags.

## A. 3FT FOLDING WALL BRACKET

- Maximum load of 35kg.
- With a 3ft reach to the centre of the bag this Punch Bag Bracket allows foot work around the bag area
- Bracket can be neatly folded without removing the bag & constructed from robust 50 x 50 box section)Lifetime warranty on frame, one-year on attachments

## B. 2FT FIXED PUNCH BAG BRACKET

- Maximum load of 40kg.
- 2ft from the wall, this bracket allows you to work around the front of the punch bag
- Supported by a 3 year main frame commercial warranty

## C. 1.25M ELITE PUNCHING BAG WALL BRACKET (Inc. D-shackle)

- Maximum load of 150kg
- 1.25 metres from the wall, this bracket doesn't restrict your foot work allowing you to work 360 degrees around the bag.
- Constructed using laser cut 100x50x3 flat sided oval material and a 6mm laser cut support , and incorporating a 316 grade stainless steel swivel rated to 500kg
- Supported by a main frame commercial lifetime warranty.

## D. ULTIMATE WALL BRACKET

- Maximum load of 40kg
- Revolutionary design that simply allows you to the push the punch bag flat to the wall using a rail system to free up crucial floor space (With a 1 metre distance to the centre of the bag)
- Constructed using laser cut 60x60x3 material and a 6mm laser cut support, incorporating a 316 grade stainless steel swivel rated to 500kg, it contains 6 fixing points to ensure this will never fail
- Supported by a main frame commercial lifetime warranty

## PRODUCT INFORMATION

<b>JLBOXFWB-03</b>	A	914mm	Folding wall bracket
<b>JLBOXFWB-05</b>	B	610mm	Fixed punch bag bracket
<b>JLBOX-EPBB</b>	C	1250mm	Elite punching bag bracket
<b>JLBOXRWB-06</b>	D	1250mm	Retractable punch bag bracket

\*Wall fittings are not supplied with these brackets

A



B



C



D





# FLOORING



PLYOBLOC

JORDAN

150CM

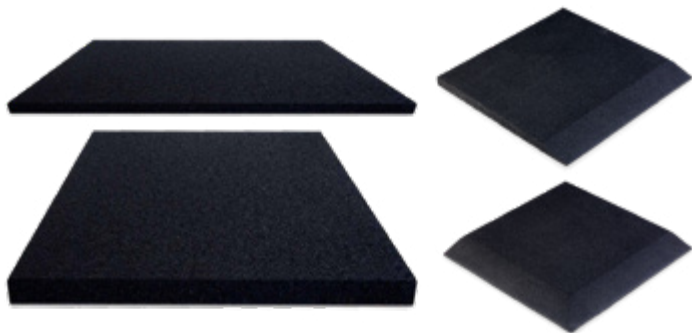
PG 99

PLYOBLOC

**PG 168 FLOORING**

- PG 170 Activ Flooring
- PG 171 Activ Fleck Flooring
- PG 172 Rubber Roll
- PG 174 Turf
- PG 176 Custom Flooring

## ACTIV FLOORING (15 & 30MM)



The ultimate gym flooring, our Activ rubber tiles are hard-wearing and easy to lay, with optional installation services available to ensure a professional finish.

- Fully compliant with EU chemical Directives (REACH) these tiles are also fire resistance tested to classification EN13501-1:E
- Mould and bacteria resistant
- Recommended to be cleaned with Jordan Gym Floor and Equipment Cleaner - 1L ready mixed (JLFCS) or 1L Concentrated (JLFC1C)
- Choose to design your own floor markings with our customisation service
- 5 year commercial warranty

### PRODUCT INFORMATION

<b>JLACTIVBT15 DT</b>	Black Tile 50cm x 50cm x 15mm
<b>JLACTIVBC15 DT</b>	Black Corner 50cm x 50cm x 15mm
<b>JLACTIVBIC15 DT</b>	Black Internal Corner 50cm x 50cm x 15mm
<b>JLACTIVBR15 DT</b>	Black Ramp Edge 50cm x 50cm x 15mm
<b>JLACTIVBT15-CUST</b>	Customisable Black Tile 50cm x 50cm x 15mm (Markings, Numbers, Logos)
<b>JL-EDGE2.7</b>	2.7m Rubber Flooring Edges - BLACK
<b>JLACTIVBT30 DT</b>	Black Tile 50cm x 50cm x 30mm
<b>JLACTIVBC30 DT</b>	Black Corner 50cm x 50cm x 30mm
<b>JLACTIVBIC30 DT</b>	Black Internal Corner 50cm x 50cm x 30mm
<b>JLACTIVBR30 DT</b>	Black Ramp Edge 50cm x 50cm x 30mm
<b>JLACTIVBT30-CUST</b>	Customisable Black Tile 50cm x 50cm x 30mm (Markings, Numbers, Logos)

## ACTIV INTERLOCKING FLOORING (15, 30MM)



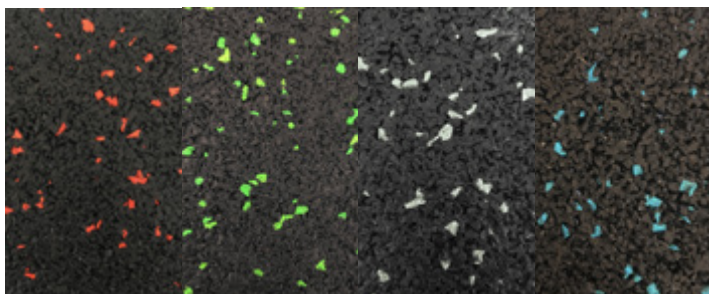
Featuring a jigsaw locking system, these 1 metre squared rubber tiles are ideal for larger surface areas, easier to secure without the use of adhesives.

- Fully compliant with EU chemical Directives (REACH) these tiles are also fire resistance tested to classification EN13501-1:E
- Mould and bacteria resistant
- Recommended to be cleaned with Jordan Gym Floor and Equipment Cleaner - 1L ready mixed (JLFCS) or 1L Concentrated (JLFC1C)
- Easy to lay and fix together with installation also available for a professional finish
- 5 year commercial warranty

### PRODUCT INFORMATION

<b>JLACTIVJIGBT10 DT</b>	Black Interlocking Tile 100cm x 100cm x 10mm
<b>JLACTIVJIGBE10 DT</b>	Black Interlocking Edge Tile 100cm x 100cm x 10mm
<b>JLACTIVJIGBC10 DT</b>	Black Interlocking Corner Tile 100cm x 100cm x 10mm
<b>JLACTIVJIGBT15 DT</b>	Black Interlocking Tile 100cm x 100cm x 15mm
<b>JLACTIVJIGBE15 DT</b>	Black Interlocking Edge Tile 100cm x 100cm x 15mm
<b>JLACTIVJIGBC15 DT</b>	Black Interlocking Corner Tile 100cm x 100cm x 15mm
<b>JLACTIVJIGBT20 DT</b>	Black Interlocking Tile 100cm x 100cm x 20 mm
<b>JLACTIVJIGBE20 DT</b>	Black Interlocking Edge Tile 100cm x 100cm x 20 mm
<b>JLACTIVJIGBC20 DT</b>	Black Interlocking Corner Tile 100cm x 100cm x 20 mm

# ACTIV FLECK FLOORING (15 & 30MM)



The ultimate gym flooring, our Activ Fleck rubber tiles offer a flare of colour to highlight dedicated workout zones e.g. free weights.

- Fully compliant with EU chemical Directives (REACH) these tiles are also fire resistance tested to classification EN13501-1:E
- Mould and bacteria resistant
- Recommended to be cleaned with Jordan Gym Floor and Equipment Cleaner - 1L ready mixed (JLFCS) or 1L Concentrated (JLFC1C)
- Fleck colours to choose from include green, blue, grey or red
- 5 year commercial warranty

\*Lead time applies

## FLECK 15MM

### PRODUCT INFORMATION

**JLACTIVFGBT15 DT** Black Tile with grey fleck 50cm x 50cm x 15mm

**JLACTIVFGBE15 DT** Black Edge with grey fleck 50cm x 50cm x 15mm

**JLACTIVFGBC15 DT** Black Corner with grey fleck 50cm x 50cm x 15mm

**JLACTIVFRBT15 DT** Black Tile with red fleck 50cm x 50cm x 15mm

**JLACTIVFRBE15 DT** Black Edge with red fleck 50cm x 50cm x 15mm

**JLACTIVFRBC15 DT** Black Corner with red fleck 50cm x 50cm x 15mm

**JLACTIVFBBT15 DT** Black Tile with blue fleck 50cm x 50cm x 15mm

**JLACTIVFBBE15 DT** Black Edge with blue fleck 50cm x 50cm x 15mm

**JLACTIVFBBC15 DT** Black Corner with blue fleck 50cm x 50cm x 15mm

**JLACTIVGNBT15 DT** Black Tile with green fleck 50cm x 50cm x 15mm

**JLACTIVGNBE15 DT** Black Edge with green fleck 50cm x 50cm x 15mm

**JLACTIVGNBC15 DT** Black Corner with green fleck 50cm x 50cm x 15mm

## FLECK 30MM

### PRODUCT INFORMATION

**JLACTIVFGBT30 DT** Black Tile with grey fleck 50cm x 50cm x 30mm

**JLACTIVFGBE30DT** Black Edge with grey fleck 50cm x 50cm x 30mm

**JLACTIVFGBC30DT** Black Corner with grey fleck 50cm x 50cm x 30mm

**JLACTIVFRBT30 DT** Black Tile with red fleck 50cm x 50cm x 30mm

**JLACTIVFRBE30 DT** Black Edge with red fleck 50cm x 50cm x 30mm

**JLACTIVFRBC30 DT** Black Corner with red fleck 50cm x 50cm x 30mm

**JLACTIVFBBT30 DT** Black Tile with blue fleck 50cm x 50cm x 30mm

**JLACTIVFBBE30 DT** Black Edge with blue fleck 50cm x 50cm x 30mm

**JLACTIVFBBC30 DT** Black Corner with blue fleck 50cm x 50cm x 30mm

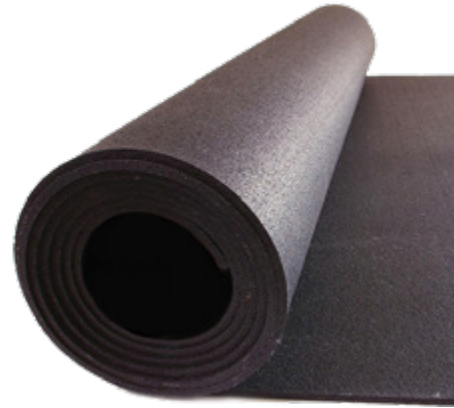
**JLACTIVGNBT30 DT** Black Tile with green fleck 50cm x 50cm x 30mm

**JLACTIVGNBE30 DT** Black Edge with green fleck 50cm x 50cm x 30mm

**JLACTIVGNBC30 DT** Black Corner with green fleck 50cm x 50cm x 30mm



## RUBBER ROLL FLOORING (6,8 & 10MM)



Perfect for warm up / cool down gym areas and studio spaces, this roll out rubber flooring is a great value option to standard rubber tiles.

- A good choice for covering concrete floors
- Wear-resistant and maintenance-free, the flooring is very easy to clean
- Durable rubber surface made up of natural rubber providing high grip surface area for training
- Simple to install requiring glue or double sided tape
- Available in plain black or fleck design colours (green, blue, grey or red)
- Five-year warranty

### PRODUCT INFORMATION

<b>JLRRF-6</b>	6mm	Black	1.25m x 10m (12.5sqm)
<b>JLRRF-8</b>	8mm	Black	1.25m x 8m (10sqm)
<b>JLRRF10</b>	10mm	Black	1.25m x 6m (7.5sqm)
<b>JLRRF-6-F</b>	6mm	Black	1.25m x 10m (12.5sqm)
<b>JLRRF-8-F</b>	8mm	Black	1.25m x 8m (10sqm)
<b>JLRRF-10-F</b>	10mm	Black	1.25m x 6m (7.5sqm)
<b>JL-EDGE2.7</b>	2.7m	Black	Rubber Flooring Edges

### JL-EDGE2.7 RUBBER FLOORING EDGES



**PG 170  
ACTIV FLOORING**

# TURF

## PREMIUM & ECO TURF



**PREMIUM**

**ECO**

Make your mark with the ultimate centrepiece for any facility. Choose from a range of premium and economy sprint tracks or design your ultimate turf track with our customisable option.

- Fully customisable, choose colours and markings to complement your branding and rigorous fitness sessions you'll use it for!
- Made from extremely high density, short fibre makes it durable for indoor and outdoor use
- Easy to install, just use double sided tape or just glue it to the floor
- Installation team available to ensure track laid perfectly to ensure longevity
- Great for prowler and sled work to encourage full body workouts

### PRODUCT INFORMATION

<b>JLST10-PRE</b>	JORDAN Premium 1.5m x 10m Sprint Track with White Border, Metre Markings & Numbers (1-10)
<b>JLST15-PRE</b>	JORDAN Premium 1.5m x 15m Sprint Track with White Border, Metre Markings & Numbers (1-10)
<b>JLST10-PREP</b>	JORDAN Premium 1.5m x 10m Sprint Track Plain Green
<b>JLST15-PREP</b>	JORDAN Premium 1.5m x 15m Sprint Track Plain Green
<b>JLST-PRE-CUS</b>	JORDAN Premium Custom Sprint Track

### PRODUCT INFORMATION

<b>JLST10-ECO</b>	JORDAN Economy 1.5m x 10m Sprint Track with Metre Markings & Numbers (1-10)
<b>JLST15-ECO</b>	JORDAN Economy 1.5m x 15m Sprint Track with Metre Markings & Numbers (1-10)
<b>JLST10-ECOP</b>	JORDAN Economy 1.5m x 10m Sprint Track Plain Green
<b>JLST15-ECOP</b>	JORDAN Economy 1.5m x 15m Sprint Track Plain Green
<b>JLST-ECO-CUS</b>	JORDAN Economy Custom Sprint Track



**JLST10-PREP  
PREMIUM TURF**



## CUSTOM BRANDED FLOORING & TURF

---

We offer the opportunity for Boutiques, Gyms and Leisure Centres to design their functional flooring space to suit a range of fitness programming.

Choose to add floor markings (numbers, dots, lines, grids, a compass and even your logo) to enhance your Activ flooring, and tailor your group exercise and gym offering so enhance your brand.

Not only can we customise your rubber tiles, you can create your own branded sprint track and turf area with our Premium Turf offering.

**Contact our dedicated customer sales team for a quote and design mock ups:**

**Call: +44 (0) 1553 763285**

**Email: [sales@jordanfitness.co.uk](mailto:sales@jordanfitness.co.uk)**







The Jordan flooring is great. Over the last 4 or 5 years we have been doing a lot of the flooring ourselves. And, what we have established is not only is it helpful and useful to have an install team fit the flooring, It gets you the finish that you need. After having this done with Jordan, we'll be using this service more in the future. "

**Aaron Johnson**  
**NR Health & Fitness**  
**Director**



**PG 178**   **SPEED & AGILITY**

- PG 180   Power Drag Bag
- PG 180   Juke 360
- PG 181   Quick Hurdles & Cones
- PG 181   Speed Ladder
- PG 182   Quick Puncher
- PG 182   Power Chute
- PG 183   BlazePods

# SPEED & AGILITY



PG 183  
BLAZEPODS

## POWER DRAG BAG

---



Take your sprint power to another level with this highly versatile training tool.

- Power Drag Bag adds resistance to sprint and drill work to build strength and explosive power
- Adjustable and comfortable padded vest attaches to an adjustable tether and heavy-duty weights bag
- Weights bag features integrated handles for upper-body training
- 10 drill cards for smashing your sprint technique and speed
- The durable Power Drag Bag can be used indoors and out. If used indoors, it won't mark wooden flooring
- One-year warranty

### PRODUCT INFORMATION

**JL-PDB**

Power Drag Bag

---

## JUKE 360

---



Build speed and strength plus improve sprint economy with this impressive stretch cord/adjustable belt combo.

- Build explosive power and increase sprint efficiency with this fantastic, durable stretch cord
- Your training partner or coach holds one end of the 8ft stretch cord that extends to 20ft. The other is connected to you via the adjustable belt with free sled ring for multi-directional movement
- Sprint against resistance or practice footwork drills for faster, more powerful running
- 10 drill cards for smashing your sprint technique and speed
- Great for athletics and team sports
- One-year warranty

### PRODUCT INFORMATION

**JL-J360**

Juke 360

---

## QUICK HURDLES

---



Increase foot speed and agility no matter what your athletic event or sport.

- Build acceleration, deceleration, speed of lateral movement and much more with these durable cones
- 20 x 8-inch diameter cones that are 2 inches tall.
- Comes with nifty storage/transport rack
- 10 drill cards for mastering technique and increasing speed
- One-year warranty

### PRODUCT INFORMATION

**JL-QC** Quick Cones

---

## SPEED LADDER

---



Good-looking set of five green hurdles for better sprint technique and more power.

- Improve knee lift, improve footwork and crank up sprint and leaping power with these hurdles that can be used indoors or out
- Five Quick Hurdles that are constructed from durable, lightweight PVC
- Adjustable hurdle height from 8in to 12in
- Hurdle legs rotate inward for easy storage
- 10 drill cards for mastering technique and boosting speed
- One-year warranty

### PRODUCT INFORMATION

**JL-QH** Quick Hurdles

---

## QUICK CONES

---



Portable training tool that should be at the heart of any sprint-training programme.

- Per4m Speed Ladder for upper- and lower-body speed and strength drills. Also improves co-ordination and core stability
- Perfect for sport-specific movements, both in athletics, dynamic individual sports like squash and team sports
- Flat rungs lay flush to the ground. Ground stakes included for outdoor use to keep ladder firmly in place
- 10 drill cards for mastering technique and boosting speed
- One-year warranty

### PRODUCT INFORMATION

**JL-SL** Speed Ladder

---

## QUICK PUNCHER

---



Impressive, lightweight and easy-to-use boxing tool to fire up speed, reactions and fitness.

- Per4m Quick Puncher is a great tool to improve your punching speed, master swift combinations and teach you to dodge punches
- Also improves cardiovascular fitness and hand-eye co-ordination
- The weighted base keeps the unit in place. A cord then hooks from the ceiling, while you punch the soft, durable ball
- Quick-change ball lock ensures it's simple to adjust ball height
- 10 drill cards for mastering technique and boosting punch speed
- One-year warranty

### PRODUCT INFORMATION

JL-QP

Quick Puncher

---

## POWER CHUTE

---



Develop acceleration, sprint speed and increased power output.

- Proven resistance training tool to increase speed and power for sprinters, team sports people, and numerous other sports and activities
- 54-inch chute provides resistance, while a quick-release buckle allows mid-run 'over-speed surges'
- Mesh panels improve chute stability and prevent tangling
- Adjustable belt with slide ring affords multi-direction movements
- 10 drill cards for mastering technique and increasing speed
- One-year warranty

### PRODUCT INFORMATION

JL-PC

Power Chute

---

## BLAZEPOD

---



Reach fitness excellence with the world's leading Pro-level Flash Reflex fitness training system.

- Powerful RGB LEDs with 8 bright and alluring colour options
- Durable, water-resistant (IP65), and with UV protection, it's ideal for outdoor fitness activities, all year round
- Small and lightweight, this portable system can be taken anywhere you want to workout
- Can be attached to any surface with specialty harnesses, suction cups, cone adapters, and straps for a super-exciting fitness session
- One Year Warranty

### PRODUCT INFORMATION

---

**JLBPHK** Home reaction kit

---

**JLBPHKD** Home reaction - deluxe

---

**JLBPTK** Trainer Kit

---

**JLBPTKD** Trainer Kit - Deluxe





# JORDAN® Training Academy

PG 129  
**IGNITE PUMP X -  
RUBBER BARBELL  
SET**

**PG 184 Jordan Training Academy**

- PG 187 Kettlebell Instructor Course
- PG 188 Olympic Weightlifting Instructor Course
- PG 188 MMA Fitness Instructor Course
- PG 189 Indoor Cycling Instructor Course
- PG 189 In-house Training Courses





PG 145  
JORDAN SPORTS  
MAT



# TRAINING ACADEMY

Jordan Training Academy delivers first class training to fitness professionals, and clubs worldwide. We've trained thousands of club owners and fitness professionals over the years, specialising in product training, through to fitness instructor training courses.

Available as both in-house courses and at locations across the UK, our REPS / CIMSPA accredited courses are both practical, and relevant to allow you and your team to immediately apply your knowledge to enhance your client experience.





## KETTLEBELL COURSE



The aim of the Kettlebell Instructor Course is to provide the fitness professional with the Theory and practical application of using a kettlebell to improve a client's fitness.

By the end of the course, you'll be able to list the benefits of Kettlebell training and how it differs from all other training methods as well as practically apply the safety considerations of training with a Kettlebell.

As a result of this Instructor course, you'll be able demonstrate, teach, analyse and correct technique as well as utilise remedial drills to correct common technical errors. You'll be a master of the Kettlebell and be in a position to apply and integrate Kettlebell exercises into a comprehensive and effective training programme for your clients.

### Assessments

Theory - Completion of theory assessment

Practical - Competent Demonstration of the exercises and coaching skills

### Outcomes

REPS Points Awarded on Completion: 8

CIMSPA Points Awarded on Completion: 4

### Entry Requirements

To qualify attendees should possess a Level 2 Gym Instructor or Studio Instructor Qualification minimum.

### Venue locations

Courses take place across the UK. Contact us for locations and dates.

### On-site Training

If you are looking to hold this training at your own location for 5+ people, please contact us for a full quote. Price including VAT, expenses may be added to final costs.

## OLYMPIC WEIGHTLIFTING COURSE



The aim of our Olympic Weightlifting Instructor Course is to provide a comprehensive overview for fitness professionals of the background and practical application of Olympic lifting.

By the end of the course you'll understand the benefits and safety considerations and contra-indications associated with weightlifting. You'll be able to demonstrate competent techniques for the Power Clean, Split Jerk and Power Snatch exercises and apply progressions and regressions.

As a result you'll have an understanding of how to include assistant exercises, Olympic Pulls, Modified Olympic Lifts and the Olympic Lifts within a progressive resistance training programme.

### Assessments

Theory - Completion of theory assessment

Practical - Competent Demonstration of the exercises and coaching skills

### Outcomes

REPS Points Awarded on Completion: 8

CIMSPA Points Awarded on Completion: 4

### Entry Requirements

To qualify for REPs CPD attendees should possess a Level 2 Gym Instructor or Studio Instructor Qualification minimum and a Valid REPs membership.

### Venue locations

Courses take place across the UK. Contact us for locations and dates.

### On-site Training

If you are looking to hold this training at your own location for 5+ people, please contact us for a full quote. Price including VAT, expenses may be added to final costs.

## MMA FITNESS COURSE



The aim of this MMA fitness course is to provide a comprehensive overview for fitness professionals of the background and practical application of Combat Training for Fitness.

By the end of the course you'll understand how MMA drills can be used to develop fitness in a non-combative environment as well as demonstrate competent techniques for kicks, punching, elbow and knee strikes using pads.

As a result, you'll have the ability to teach individual clients of a basic fitness level as well as train a group using basic fitness drills.

### Assessments

Theory - Completion of theory assessment

Practical - Competent Demonstration of the exercises and coaching skills

### Outcomes

REPS Points Awarded on Completion: 8

CIMSPA Points Awarded on Completion: 4

### Entry Requirements

To qualify for REPs CPD attendees should possess a Level 2 Gym Instructor or Studio Instructor Qualification minimum and a Valid REPs membership.

### Venue locations

Courses take place across the UK. Contact us for locations and dates.

### On-site Training

If you are looking to hold this training at your own location for 5+ people, please contact us for a full quote. Price including VAT, expenses may be added to final costs.

## INDOOR CYCLING COURSE



The aim of our Indoor Cycling Instructor Course is to provide a comprehensive overview for fitness professionals of the background and practical application of using indoor studio bikes for improving fitness in a group setting.

By the end of the course you'll be able to demonstrate the importance of safety on a bike, plan a safe and effective class and list the benefits using an indoor cycle.

As a result of attending this indoor cycling course, you'll feel confident to plan in effective music selection and choreography, to maximise impact in your class.

### Assessments

Theory - Completion of theory assessment

Practical - Competent Demonstration of the exercises and coaching skills

### Outcomes

REPS Points Awarded on Completion: 8

CIMSPA Points Awarded on Completion: 4

### Entry Requirements

To qualify attendees should possess a Level 2 Gym Instructor or Studio Instructor Qualification minimum.

### Venue locations

Courses take place across the UK. Contact us for locations and dates.

### On-site Training

If you are looking to hold this training at your own location for 5+ people, please contact us for a full quote. Price including VAT, expenses may be added to final costs.

## IN-HOUSE TRAINING COURSES

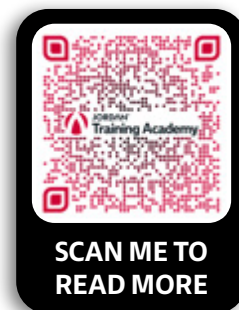


In addition to our Instructor courses, we also offer a number of in-house training opportunities for Personal Trainers and Gym Staff within gyms, leisure trusts, sports clubs and universities.

Choose to develop your own specialist course, tailored to your specific programming needs, or from any of the following:


- **Functional Fitness Instructor Workshop**
- **Bodyweight Suspension Training Instructor Course**
- **Functional Training Rig Workshop**

For more information on any of our courses, contact our sales team: [sales@jordanfitness.co.uk](mailto:sales@jordanfitness.co.uk)



**CIMSPA**  
PARTNER

**REPS**  
The Register of  
Exercise Professionals



## PG 190 CASE STUDIES

- PG 192 PureGym
- PG 194 Rox Life
- PG 196 Stealth Gym
- PG 198 Boxing Science
- PG 200 Midlands Fitness Games
- PG 201 Warehouse Gym & Kitchen
- PG 202 Sorority Strength
- PG 204 Home Gym Pods



## WHERE TO START?

---

Every gym needs its own spin, but it's nice to have a nosey at what others are doing in your sector.

Having kitted out and installed thousands of fitness spaces over the past three decades, we've seen a variety of layouts & equipment choices.

So, if you are looking for some inspiration, take a tour of our case studies, for inspiration.



PG 24  
**URETHANE DUMBBELLS  
CUSTOM BRANDED**

PG 30  
**DUMBBELL RACKS**

PG 34  
**URETHANE BARBELLS  
CUSTOM BRANDED**

PG 37  
**BARBELL RACKS**

PG 48  
**CLASSIC OLYMPIC DISCS  
CUSTOM BRANDED**





Through a rigorous tender process conducted during 2018, Jordan stood out as the clear front runner to supply fitness accessories across all our new and existing gyms. Jordan's product innovation & quality, attention to detail and competitive pricing makes them a perfect long term partner for our business."

**Richard Annetts**  
**Model & Equipment Manager**



**SCAN ME TO  
READ MORE**

## PureGym

PureGym, now with over 300 gyms across the UK and an expansion planned for the Middle East and the USA, are one of the largest gym chains.

Having chosen Jordan as their customisation partner back in 2018, we now supply a range of free weights and functional equipment

Due to our ability to custom brand Dumbbells, Barbells, Studio Barbell Plates and Olympic Competition Plates, PureGym chose to brand their entire free weight collection, enhancing their friendly, supportive values and epitomise their 'Everybody Welcome' message.





**PG 76  
FUSION HIIT BENCH**

**PG 23  
HEX URETHANE  
DUMBBELLS**

**PG 129  
IGNITE PUMP X RUB-  
BER DISCS**



In a boutique setting it's really important we have some of the best kit going. Out of everything on the market, Jordan was clearly the best choice."

**Allan Reid**  
**PT & Instructor**



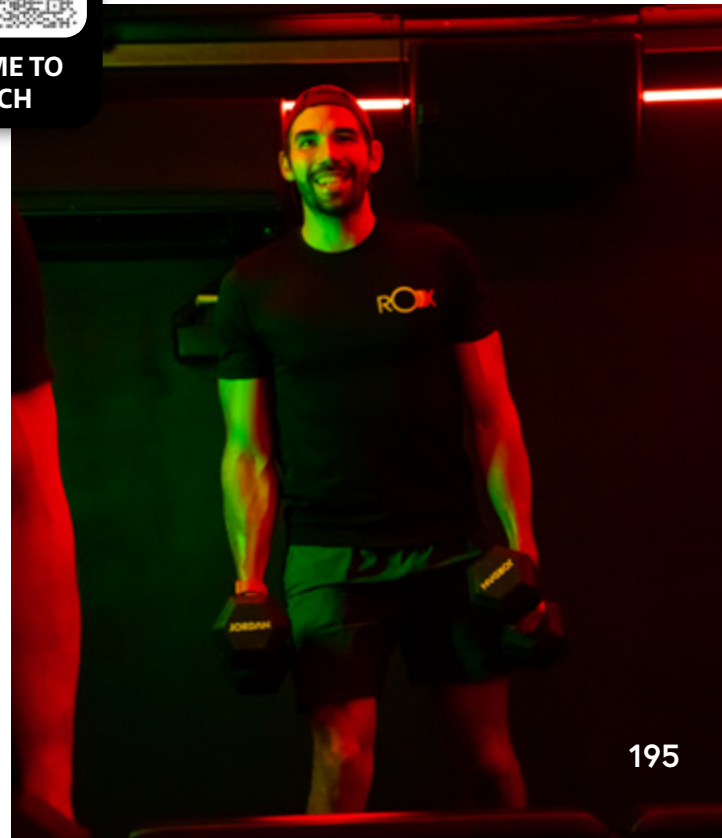
**SCAN ME TO  
WATCH**

## ROX LIFE

ROXLIFE is a boutique fitness studio in Brighton and Hove, offering 4 group fitness concepts including Ride, Strength, Box and Yoga, across two, fully immersive studios.

Rox Life selected Jordan Fitness as their sole supplier for HIIT Benches, which are used in a variety of classes and personal training sessions within the studio. Bumper plates, kettlebells and hex dumbbells are also used by clients to compliment their wide range of classes.

This is one small space that really packs a punch.



## STEALTH GYM

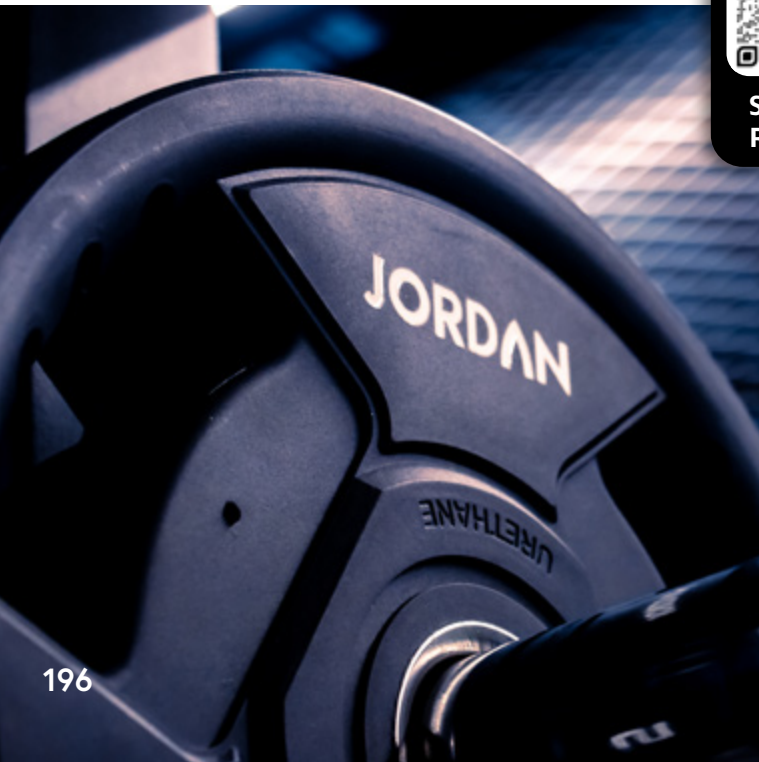
Stealth Gymnasium is a state-of-the-art gym and boxing space that offers a wide range of facilities at Macclesfield Football Club.

Created by Robbie Savage and Robert Smethurst, Stealth Gym are a unique set up, offering their professional footballers and the local community.

Jordan Fitness equipment is a firm favourite of the gymnasium, due to its high quality and versatility to be used in various classes such as spin, circuits and core along with strength/conditioning training. Chosen alongside Matrix Cardiovascular kit and weight machines, Stealth have invested in top quality kit that looks first class.



SCAN ME TO  
READ MORE



We love the quality of our Jordan equipment, especially in the classes where we can involve the slam balls, barbells and mats."

**Tom Forsyth**  
Head Trainer

**PG 781  
BOX12 POD**

**PG 154  
HEAVY HITTERS -  
AQUA BAG**

**PG 96  
NEOPRENE  
KETTLEBELLS**

**PG 102  
SANDBAG PRO**

**PG 107  
SLAM BALLS**



**PG 83  
POWER RACK**

**PG 62  
OLYMPIC LIFTING  
PLATFORM**

**PG 86  
PREMIUM  
HEAVY DUTY  
SQUAT STAND**

**PG 99  
I-SERIES  
ADJUSTABLE  
BENCH**

**PG 23  
CLASSIC RUBBER  
DUMBBELLS**



The equipment is high quality. I've seen a lot of equipment in many gyms over the years and Jordan Fitness stands out."

**Danny Wilson**  
**Boxing Science Owner**



**SCAN ME TO  
READ MORE**

## BOXING SCIENCE

Dedicated to training and research for physical performance in Boxing, Boxing science not only has a gym based just outside of Sheffield, Danny and the team look after an international community of sports professionals.

Boxing Science invested in Jordan gym equipment due to the overall quality, and style. With machines such as the Dual Pulley, free weights including dumbbells and bumpers through to a range of functional equipment, Boxing Science assists athletes in reaching their maximum potential.



## MIDLANDS FITNESS GAMES

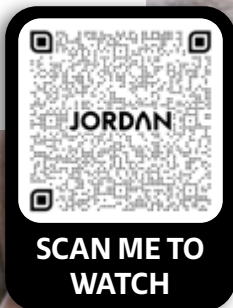
Created by brothers Myles & James Brownhill, of Fosse Way CrossFit, their vision of a bi-annual Crossfit Games in the heart of England, came into fruition with a sell-out event.

This 1400 sqm of space transformed into an epic Crossfit playground, with a custom 20 lane rig, brand new Jordan Olympic barbells/plates and kettlebells, creating an electric atmosphere.

With Games planned in twice a year, they ensure the highest quality of kit will be available for their avid fitness community.



PG 56  
**ULTIMATE BAR**



PG 41  
**HG BUMPER  
PLATES**



This was my first competition and I loved it. It was really well organised, the judges and volunteers were really helpful throughout the day. Workouts were good and challenging yet enjoyable. The atmosphere was great. Can't wait to do it again next time!!"

**MFG Attendee**



## WAREHOUSE GYM & KITCHEN

From specialist functional, leg, power and upper body zones along with a cardio area and studio, Warehouse Gym is well equipped with top quality equipment.

Jordan Fitness weight lifting equipment is a favourite of the gym. Between Ignite V2 Fixed Barbells and Urethane Dumbbells, to Olympic Discs for their machines and Competition Plates for their clients training for competitions, they have it all.



PG 36  
OLYMPIC  
URETHANE  
DISCS



SCAN ME TO  
WATCH



PG 36  
PREMIUM URETHANE  
BARBELLS



Amazing!! Packed out with up to date equipment. Well trained staff and friendly members"

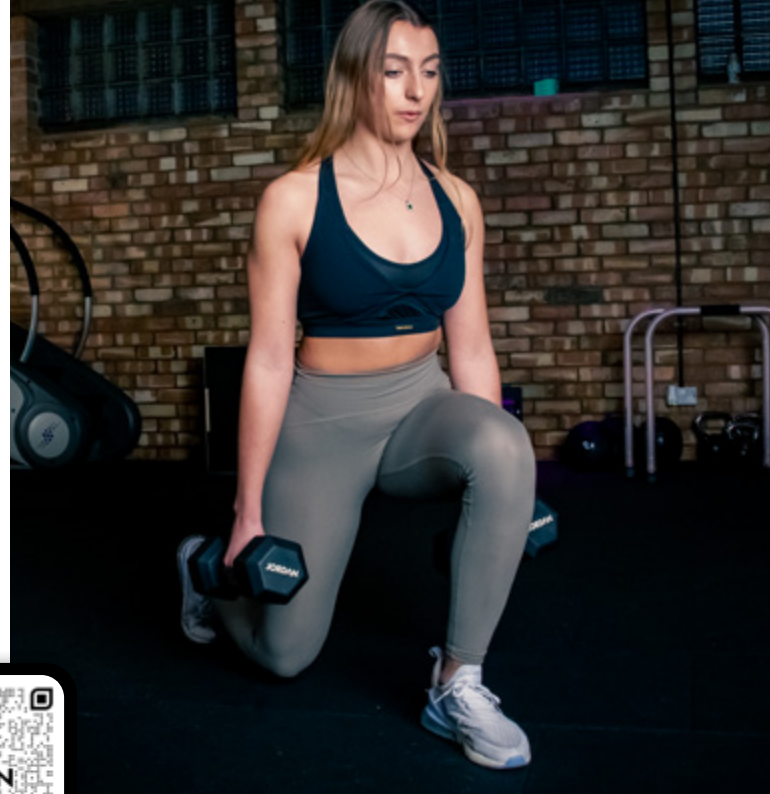
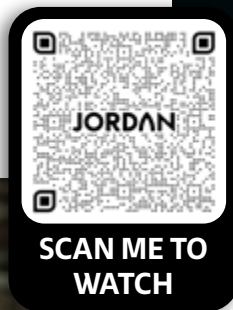
**Gym Member**

## SORORITY STRENGTH

Growing up in Gyms, and following in her father's footsteps, Kate from Sorority set up her dedicated female-only gym late 2021.

Having experience in running several other gyms, and having chosen Jordan as the main supplier, she has continued her investment for her new passion project.

Investing in Jordan Fitness flooring, barbells, fleck bumper plates as well as Hex Dumbbells and the all-important Glute/Ham Developer. She supports her ladies in feeling confident and strong, and brings an energy to her community we've not seen before.



"Jordan ticks all the boxes for the absolute essentials you need in the gym... they're just so sexy "

**Kate Austin**  
**Founder Of Sorority Strength**



**PG 61  
OLYMPIC SPRING  
COLLARS**

**PG 34  
HG BLACK RUBBER BUMPER  
PLATE - COLOURED FLECK**

**PG 59  
6FT STEEL  
SERIES OLYMPIC  
BAR**

**PG 108  
MEDICINE  
BALL**

**PG 145  
SPORTS MAT**

**PG 96  
NEOPRENE  
KETTLEBELLS**

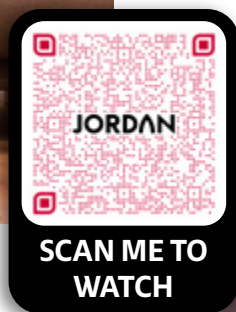
**PG 76  
FUSION HIIT  
BENCH**

**PG 23  
CLASSIC RUBBER  
DUMBBELLS**



Creating a mini gym for my Personal Training business was the best thing I could have done in Covid. It gave me an opportunity to continue to support my clients and a safe space for them to develop. Jordan kit has been key in the set up, as they have all the essentials you need."

**Charlie, Personal Trainer  
Joint Owner**

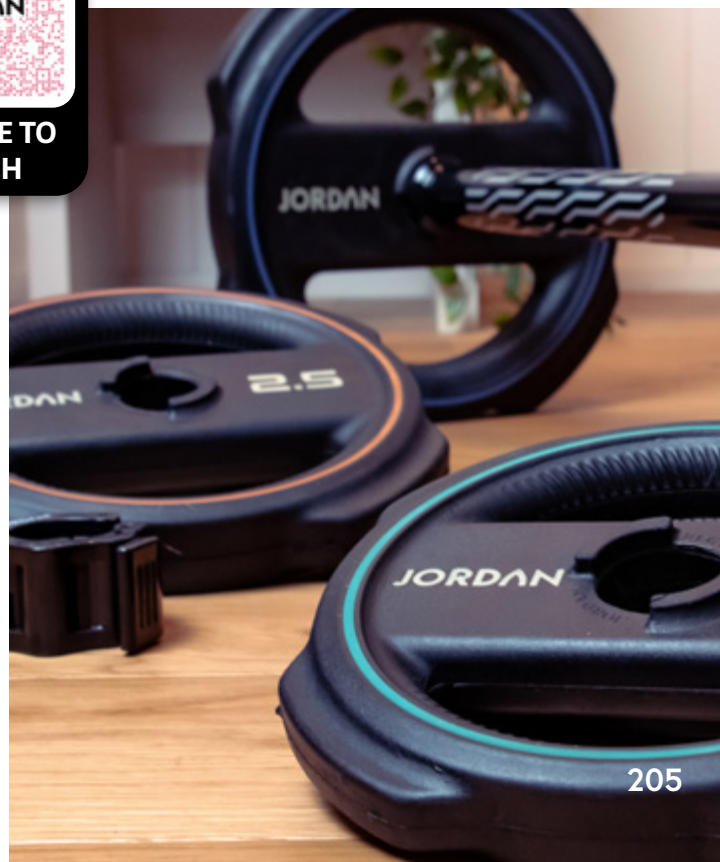


## HOME GARDEN PODS

With the growth of home gyms during Covid lockdowns, Garden pods have been a great way to extend home gyms and create multi-use office/gym spaces.

We've seen some extraordinary set ups from basic yoga hideaways, through to complete mini Gyms, for Personal Trainers to run their services from.

Take a look at the Garden Pod Gym designs and workouts offered in these small but sturdy spaces.



# INSTALLATION & SERVICING

Here at Jordan, we offer a full support service to ensure your gym equipment and flooring is installed safely and securely, giving your facility a professional look and feel.

Our dedicated Install Engineers are on hand to build your rigs and racks through to laying your flooring. With annual service plans available, our team of specialists can ensure continued support to ensure your installation remains safe and secure.

Here's what you can expect when you invest in our installation service:

Your order is taken, either over the phone, in person or online.

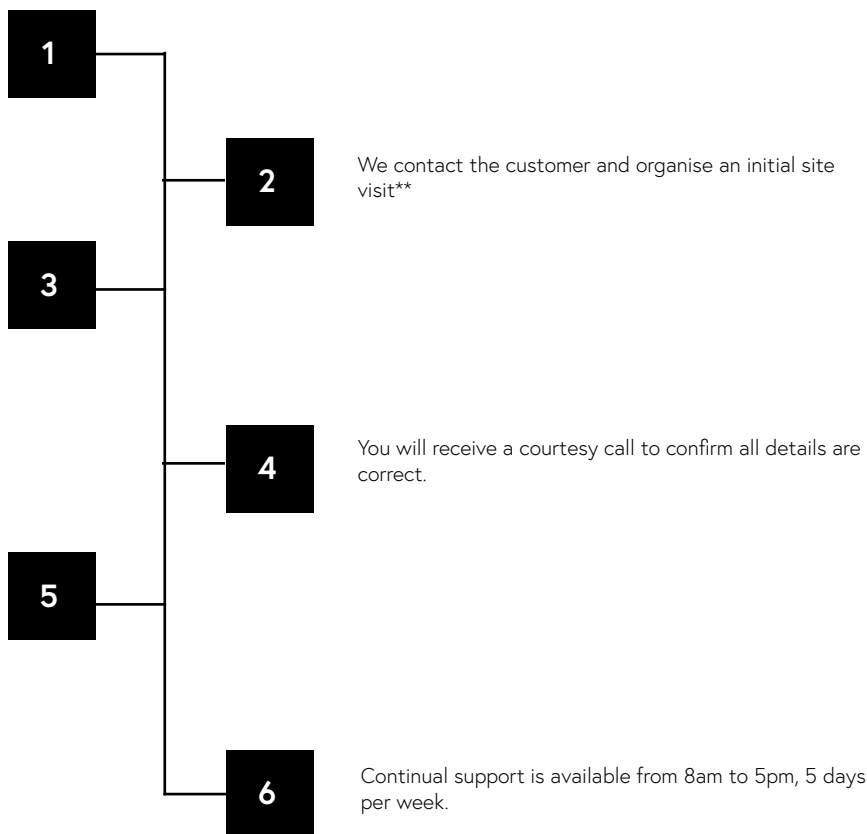
We will consult with the client

- Receive installation advice including the process.
- Flooring installations may require further process to make sure the flooring is level and safe to use.
- A floor plan is agreed.
- A date of installation is agreed.

Installation day

- Arrive on site for installation with the team.
- A brief of the job and tasks is carried out with the customer and Jordan installation team.
- Palletised flooring and equipment is brought onto site which Jordan unpack.
- Equipment is fitted and installed as agreed at the consultation stage.
- All equipment is checked.
- Customer is shown around the installation before customer signs for the completion of the works.
- All packaging and rubbish is removed from site\*\*\*

You will receive a courtesy follow up phone call after installation.



\* Various communication methods are used. This will be decided on a case-by-case basis.

\*\* Site visits are arranged for large installations i.e. flooring, functional rigs etc..

\*\*\* Pallets and skips may require an extra day for collection.

## BUSINESS FINANCE OPTIONS

---

**Invest in the commercial gym equipment you need to grow your vision and ambition, without the burden of major upfront costs.**

Suitable for fitness start-ups, growing gyms looking to invest in new locations, as well as franchises, hire purchase and business leasing are great options for companies looking to take the next step in the fitness market.

### **What business finance options are available?**

#### **Finance lease**

Leasing is an affordable option for gyms looking to tailor payments to suit their cash flow, as rental payments can often be specified at the start of the lease. With a finance lease agreement, the finance company will buy the equipment you need and hire it to you over a specified period.

The equipment will remain the property of the finance company, however you can choose to use it as if it were your own asset. A further benefit for your company accounts is that lease rentals can be 100% tax deductible against profits. You only pay VAT on the rental, therefore if your company is VAT registered you may be able to reclaim a proportion of the VAT, this may help with cash flow.

As with all leasing agreements you will not own the equipment and will need to extend your lease to keep the equipment or invest in a new equipment lease.

However, as gym equipment is classified as a depreciating asset this is a great option for gyms who need to budget and invest elsewhere to grow their membership base (or even open another gym!).

#### **Hire purchase**

If you do want to own your gym equipment but wish to spread the cost over a period of time, hire purchase agreements give you the option to obtain ownership of the asset at the end of the agreement for a final ownership fee.

With hire purchase, one of the additional benefits is that you may become the equipment owner earlier than agreed as you can settle the remainder of the finance early if this suits you financially\*.

For further information on the benefits of buying your commercial gym equipment through leasing or hire purchase, please contact our experienced account managers: [sales@jordanfitness.co.uk](mailto:sales@jordanfitness.co.uk)

\*subject to terms

## WARRANTY INFORMATION

---

Please see our website for warranty information









**GYM DESIGN. THE  
POSSIBILITIES ARE ENDLESS...**

# A-Z INDEX

## A

Ab Mat	PG 143
Activ Flooring	PG 170, 171
Adjustable Benches	PG 78
Adjustable Pulley	PG 88
Aerobic Step	PG 136
Airex	PG 141, 145, 148
ALPHA^CHAMP	PG 116

## B

Ball Racks	PG 109
Bar Holder & Wall Bar Holder	PG 60
Barbells	PG 32
Barbell Racks	PG 37
Benches & Machines	PG 74
BlazePods	PG 183
Bodyweight	PG 118
Bosu & Rack	PG 139
BOX12 Pod	PG 71
Boxing	PG 154-167
Boxing Bags	PG 154, 158
Boxing Station & Brackets	PG 166

## C

Cable Attachment	PG 90
Chinning bar	PG 119
Classic Training Range	PG 187-189
Core Plate, Trainer and handle	PG 65
Custom Branded Barbells	PG 34
Custom Branded Dumbbells	PG 24
Custom Branded Examples	PG 190
Custom Branded Flooring/Turf	PG 78
Custom Branded HIIT Bench	PG 77
Custom Branded Oak Lifting Platform	PG 62
Custom Branded Olympic Discs	PG 48

## D

Digital Timer	PG 112
Dual Adjustable Pulley	PG 88
Dumbbell Racks	PG 28
Dumbbells	PG 20

## E

Elite Steel High Performance bar	PG 57
----------------------------------	-------

## F

Fit Balls & Racks	PG 138
Fit Bars & Rack	PG 140
Flat & Utility Benches	PG 79
Flex-Bags	PG 105
Flooring	PG 168
Flowin®	PG 120
Football Training	PG 178
Fractional Plates	PG 44
Free Standing Punch Bag	PG 154
Free Weight Accessories	PG 64
Free Weights	PG 16
Fusion HIIT Bench	PG 76

## G

Gym Hammer	PG 115
Gym Rings	PG 121
Grip Balls	PG 108

## H

Hatton Body Belt & Wraps	PG 164
Hatton Boxing	PG 157
Hatton Boxing Gloves	PG 161
Hatton Pads	PG 163
Hatton Speed Ball	PG 160, 166
Heavy Hitters - Aqua Bag	PG 154
Hollow Technique Plates	PG 45

## I

Ignite Rig Attachments	PG 70
Ignite Rig Series	PG 68-69
Ignite® Series	PG 187
I-Series	PG 87

## J

Jordan Training Academy PG 184

## K

Kettlebells PG 94-96  
Kettlebell Racks PG 97

## L

Lifeline USA PG 122  
Lower Body Machines PG 84

## M

Medicine Balls/Double Grip Balls PG 108  
Medicine Ball Rack PG 109

## N

Neck Pad PG 64

## O

Olympic bars PG 52  
Olympic Benches & Machines PG 80  
Olympic Collars PG 61  
Olympic Discs & Plates PG 38  
Olympic Dumbbell Bar PG 63  
Olympic Power Rack PG 83

## P

PER4M PG 178-183  
Performance Racks PG 70-71  
Plate Rack PG 51  
Platform & Racks PG 62  
Plyometrics PG 98  
Powder Coating Services PG 16,17  
PowerWave™ PG 116  
Preacher curler PG 86  
Pulseroll PG 151

## R

Reebok Steps PG 136  
Resistance Bands PG 114  
Rigs PG 66-73  
Rubber Tiles PG 170

## S

Sandbag Extreme PG 103  
Sandbag Pro PG 102  
Sandbag Rack PG 103  
Shadow Bar PG 54  
Slam Balls PG 107  
Sleds PG 111  
Sports Mats & Racks PG 142  
Sprint Track PG 176  
Squat Rack PG 86  
Steel Series Bars PG 59  
Storage Cage PG 156  
Studio Accessories PG 132  
Studio Barbell Racks PG 131  
Studio Barbells PG 128  
Studio Essentials PG 136  
Studio Hex Dumbbells PG 134

## T

Tank PG 112  
Technique Plates PG 44  
Teqball PG 116  
Thai Pads PG 156  
Theragun PG 117  
Training Ropes PG 113  
TufNut PG 101  
Turf PG 174

## W

Wall Balls & Rack PG 106  
Weight Tree PG 50  
Weighted Vest PG 119

## Y

Yoga PG 146



# JORDAN

56 Oldmedow Road, Hardwick Ind. Est.  
King's Lynn, Norfolk, PE30 4JJ  
United Kingdom

+44 (0) 1553 763 285  
[sales@jordanfitness.co.uk](mailto:sales@jordanfitness.co.uk)  
[www.jordanfitness.com](http://www.jordanfitness.com)